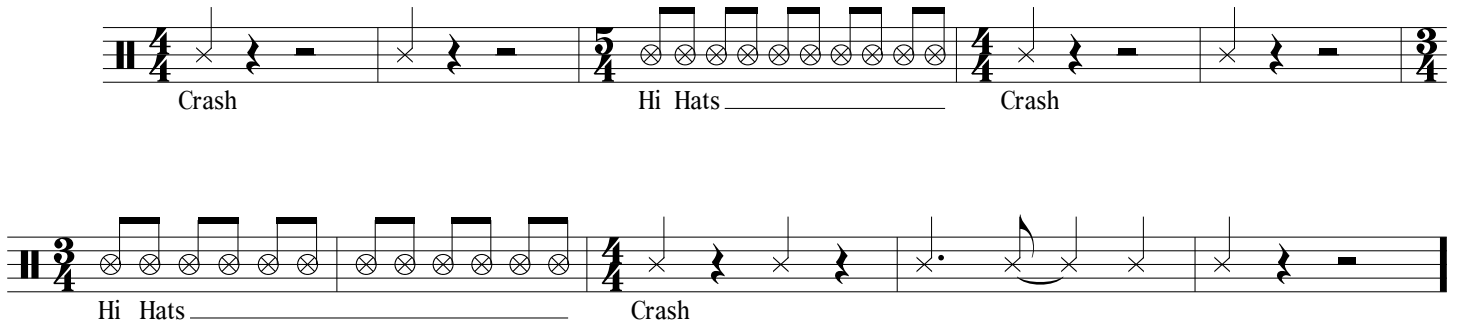


Marshall Warm Ups 2017

1

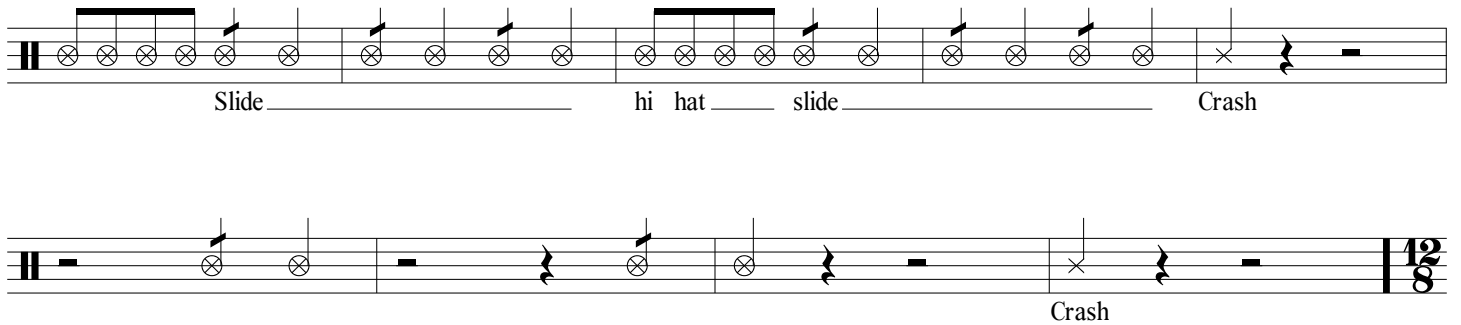


Musical notation for warm up 1, consisting of two staves. The first staff has a 4/4 time signature and contains a crash cymbal followed by a rest, then a hi hat pattern of eighth notes, and another crash cymbal. The second staff has a 3/4 time signature and contains a hi hat pattern of eighth notes, followed by a crash cymbal and a rest.

Crash Hi Hats Crash

Hi Hats Crash

2

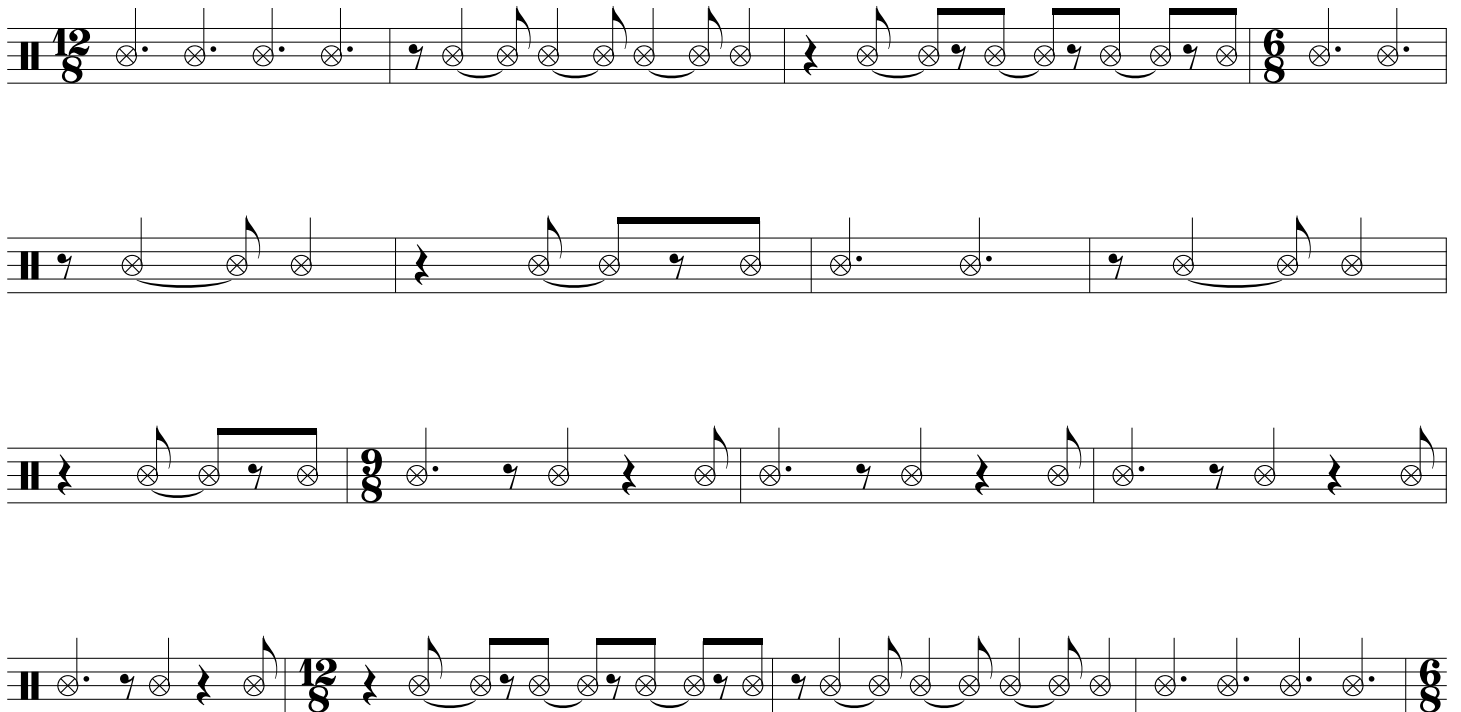


Musical notation for warm up 2, consisting of two staves. The first staff has a 4/4 time signature and contains a slide cymbal pattern, a hi hat pattern, a slide cymbal pattern, and a crash cymbal. The second staff has a 12/8 time signature and contains a crash cymbal.

Slide hi hat slide Crash

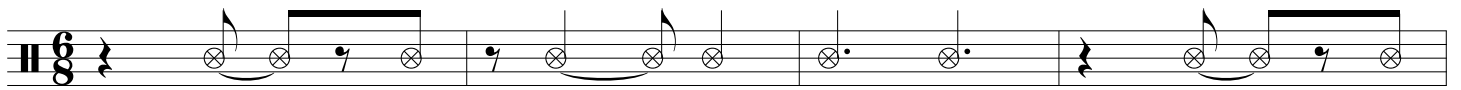
Crash

3

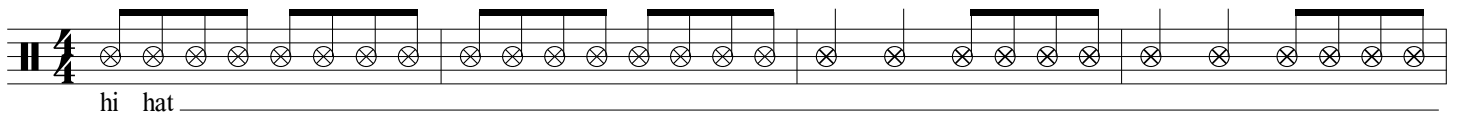


Musical notation for warm up 3, consisting of four staves. The first staff has a 12/8 time signature and contains a pattern of eighth notes and rests. The second staff has a 9/8 time signature and contains a pattern of eighth notes and rests. The third staff has a 9/8 time signature and contains a pattern of eighth notes and rests. The fourth staff has a 12/8 time signature and contains a pattern of eighth notes and rests.

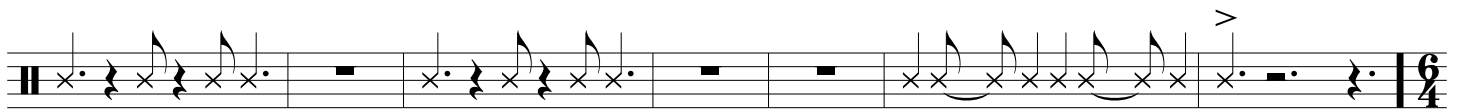
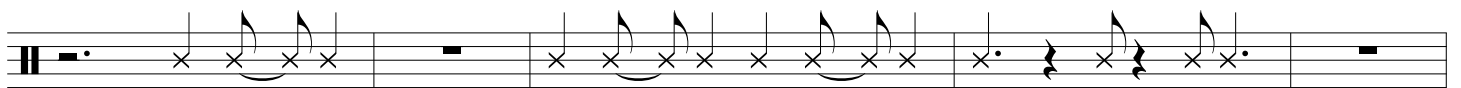
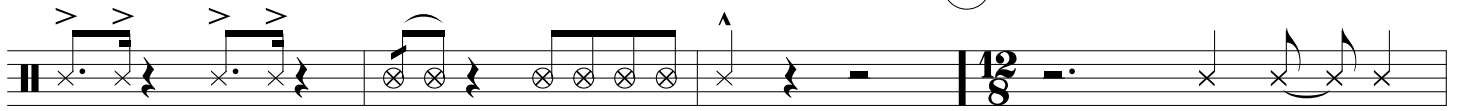
Crash



4



5



6

