

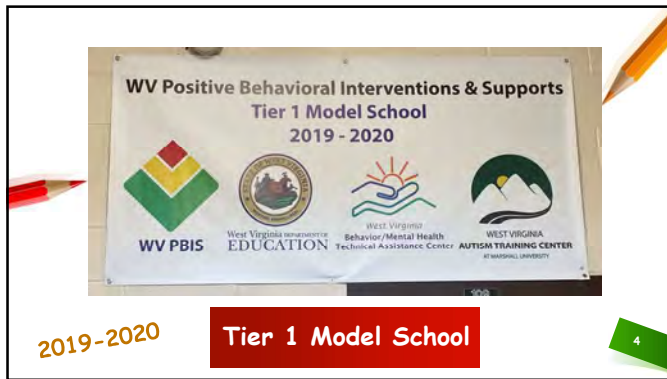
1



2



3



4

What is your TFI telling you?

1.8 Feedback and Acknowledgement:
A formal system (i.e., written set of procedures for specific behavior feedback that is (a) linked to school-wide expectations and (b) used across settings and within classrooms) is in place and used by at least 90% of a sample of staff and received by at least 50% of a sample of students.

1.10 Faculty Involvement:
Faculty are shown school-wide data regularly and provide input on universal foundations (e.g., expectations, acknowledgements, definitions, consequences) at least every 12 months.

1.11 Student/Family/Community Involvement:
Stakeholders (students, families, and community members) provide input on universal foundations (e.g., expectations, consequences, acknowledgements) at least every 12 months.

1.12 Discipline Data:
Tier 1 team has instantaneous access to graphed reports summarizing discipline data organized by the frequency of problem behavior events by behavior, location, time of day, and by individual student.

1.13 Data-based Decision Making:
Tier 1 team reviews and uses discipline data at least monthly for decision-making.

1.14 Fidelity Data:
Tier 1 team reviews and uses SWPBS fidelity (e.g., SET, BoQ, TIC, SAS, Tiered Fidelity Inventory) data at least annually.

5

Why ClassDojo?

Everything you ❤️ in one place

- Connect with families:** Families stay deeply connected to the classroom.
- Create positive classrooms:** Teachers create positive classroom communities.
- Share student learning:** Students share their learning home.

+100% free!


*Info from www.classdojo.com

6

Why ClassDojo?

Class Story


Bring families into the classroom



- A private feed to share classroom moments with families
- Post photos, activities, field trips, anchor charts, and more
- Feel the love from parents and know they've seen your posts

School Story

Create a school-wide community



- Send school-wide news and updates to ALL families
- Share photos and videos from school so families can join in on the fun
- Reach families wherever they are, no matter what language they speak


*Info from www.classdojo.com

7

Why ClassDojo?

Portfolios


Let students share their work home



- Creative ways to show student work and learning throughout the year
- Easy to login using a QR code, text code, or Google login
- Teachers approve posts before they're shared home
- Families and teachers can leave encouraging comments for students

Messaging

Build a 1:1 connection with families



- 1 Instantly send messages to families without giving out your phone number
- 2 Set "Quiet hours" to let families know when you're unavailable
- 3 Know when your message has been seen -- a teacher-only perk!
- 4 Download your message history to share with admin, if needed

PLUS it's **FREE** and follows students year to year!

*Info from www.classdojo.com

8

Why ClassDojo?

Translations

Communicate with all families, regardless of language



Translations in 35+ languages ensure ALL families are a part of your school community

Toolkit

Stay organized and on task



- Useful classroom tools, all in one place
- Arrange students into groups, display activity directions, turn on focus music, and more!

*Info from www.classdojo.com

9

Why ClassDojo?

SEL Videos and Activities

Develop social-emotional learning in the class

- Students love learning about growth mindset, empathy, and mindfulness from the ClassDojo monsters.
- Teach social-emotional skills through videos, discussion questions, and meaningful follow-up activities

Instant Feedback

Encourage positive classroom skills and behavior

- Give students positive feedback for skills like "Teamwork" and "Helping others".
- Skills are fully customizable and can be tied to PBIS or other school programs
- Sharing feedback home is optional! Connect families just for Class Story and Portfolios

*Info from www.classdojo.com

10

Why ClassDojo?

Creating a positive school culture

Capture and share important data for PBIS

Improve family engagement

Parents and students can view progress at home from their own accounts!

*Info from www.classdojo.com

11

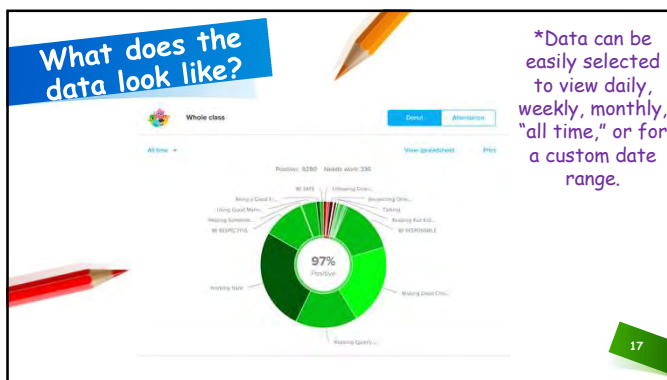
Our Dojo Journey

1 st Year	Positive Only (shared)
2 nd Year	Needs Work Only (didn't share)
3 rd Year	Positive & Needs Work (shared)

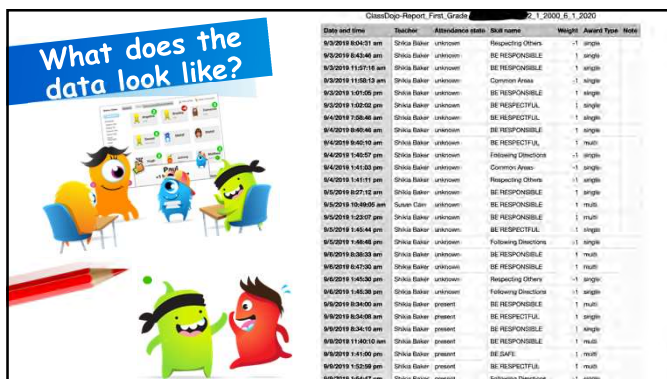
12



16



17



18

What does the data look like?

*Data can be easily selected to view daily, weekly, monthly, "all time," or for a custom date range.

19

19

How do we use this?

Teachers can...	School Leader can...
share class with school leader & specialists.	access all class data school-wide.
monitor for family communication & student needs.	monitor for school-wide communication.
use data charts for weekly PBIS reward & reteach.	access school-wide data for PBIS meetings.
use data charts for SAT meetings.	use data charts to share with stake-holders.
use data for conduct grades.	use data for Tier 2 decision rules.
use data for class incentives & rewards.	access data for county discipline reports.

20

Where are we headed?

Student Think Sheet

Office Discipline Referral

21

21

Where are we headed?

Instant Parent Communication

Data Tracking in Student Portfolios

22

What about remote learning?

Longhorn Expectations for Remote Learning

We reworked our expectations for teachers, students, & parents during remote learning.

Longhorn Teachers will...	<ul style="list-style-type: none"> Post assignments online no later than Monday for the first day of the school week. Use class time for assignments with adequate time to complete them allowing time for families to work over the weekend if needed. Give feedback to students and acknowledge their completed work. Be clear about how and when they can be contacted by parents. Be reasonable about the length of assignments and how long they'll take to complete and will be clear and specific with directions.
Longhorn Students will...	<ul style="list-style-type: none"> Complete and turn in assignments. Ask for help when you need it. Be respectful to your teacher (that includes the one at home!). Be respectful and responsible in your post/comment for assignments. Work hard and do your best!
Longhorn Parents will...	<ul style="list-style-type: none"> Check and read directions thoroughly for all assignments. Ask for help when you need it and maintain contact with your child's teachers. Check that assignments are complete and turned in on time. If new or more with getting something completed, contact your child's teacher. Try to be consistent and maintain a schedule routine at home. Provide your child for their hard work!

23

23

What about remote learning?

Teachers gave positive Dojo points to students to reinforce these expectations.

24

What about remote learning?

Students earned rewards for the ClassDojo points they earned.

Longhorn Rewards
for Remote Learning

Dojo Points	Reward
15	Video message from your teacher
20	Skip an assignment
25	Send a video message to your class

25

How has this all worked?

"It's so easy to see student data for a variety of timeframes. It's been great for my classroom and ties in perfectly to our PBIS program."
-2nd grade teacher

"I love being instantly connected with parents."
-5th grade teacher

"ClassDojo gave my husband and I the information we needed to identify patterns in our son's ability to self regulate. Since we were able to track when and where in his day he was struggling we were able to work with his teacher to develop an intervention plan that not only gave him the support he needed, but a support that he eventually took ownership of. The data from ClassDojo was a huge factor in understanding what our child needed to be his best self."
-2nd grade parent

"As a resource teacher I love ClassDojo because I'm connected to all of my classes and can easily give out acknowledgments when they're with me."
-PE/Computer


26

26

Thank You!

eday@k12.wv.us
s.d.baker@k12.wv.us

27



Upcoming Webinars

<p>June 4, 2020 – 11am – 12:00 pm Michael Powell "Using PBIS to Enhance Learning"</p> <p>June 9, 2020 – 11 am – 12 pm Meredith Dailer "Big Building, Big Problems, and Big Solutions"</p> <p>June 9, 2020 – 1pm -2pm Educational Managers from Kanawha County "Implementing and Utilizing TPOT in Practice Based Coaching"</p> <p>June 11, 2020 – 11am-12pm Barb Tucker "Connections Matter"</p> <p>June 11, 2020 – 1 pm -2pm Jeannie Harrison "Yoga and Meditation for a Happy Classroom"</p>	<p>June 16, 2020 – 11am -12pm Lost Creek Elementary "The Push of a Button: Using Class Dojo to Streamline School Data"</p> <p>June 18, 2020 – 11 am – 12pm Jason Conaway "Alternatives to Suspensions"</p> <p>June 23, 2020 – 11am – 12 pm Clay County High School "Packing 10 Pounds into a 5 Pound Bag"</p> <p>June 25, 2020 – 11am – 12pm JoDonna Burdoff "Utilizing PBIS in High Schools and Alternative Settings with Older, Challenging Students"</p> <p>June 30, 2020 – 11am -12pm Coalton Elementary School "Tier 1 PBIS Model Schools: How We Got Where We Are"</p>
---	---

28



Contact Us:

Alicia Ziman
PBIS Coordinator
holt64@marshall.edu

www.marshall.edu/bmhtac

29
