



Route 220 Rockfall Mitigation Project: Mitigation of a Rockslope that leads to a 5 star resort

Martin J. Woodard, PhD PG PE
GeoStabilization International

marty@gsi.us

Brian Bruckno, BA, MS, PhD PG
Virginia DOT

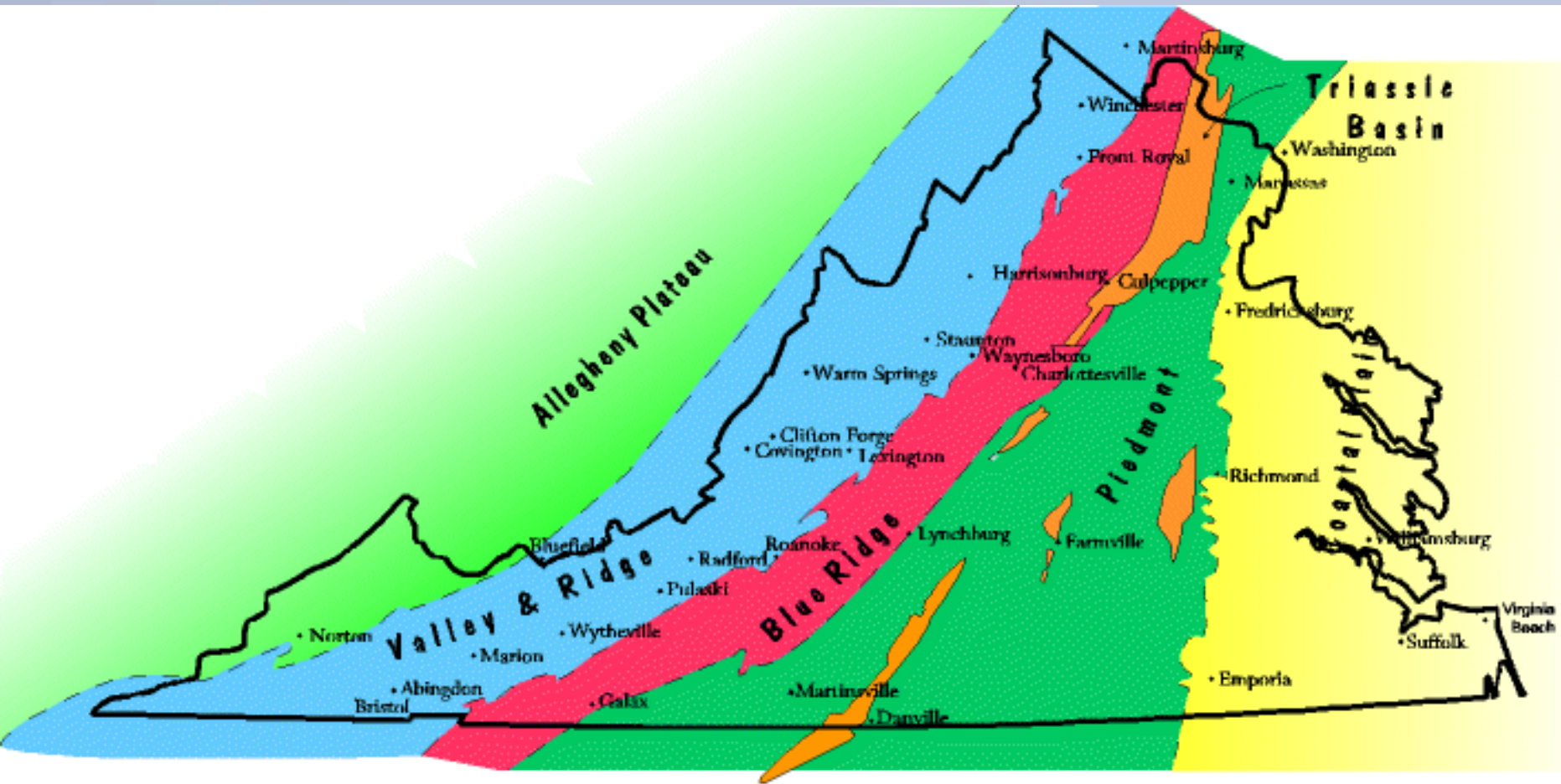
bbruckno@huskers.unl.edu

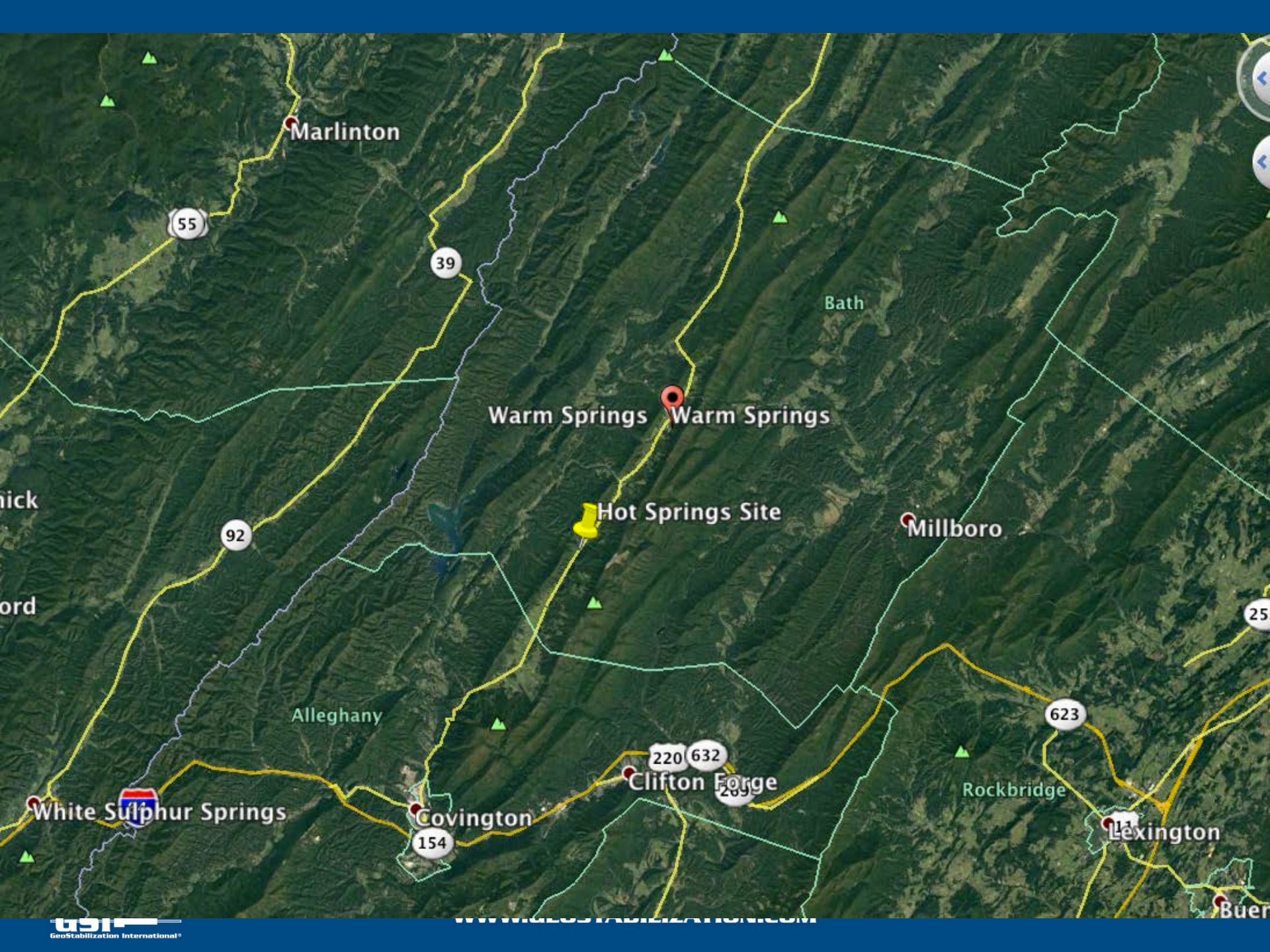


Virginia

- ★ State Capitals
 - County Seat
 - Cities 500,000+
 - Cities 100,000-499,999
 - Cities 50,000-99,999
 - Cities 25,000-49,999
 - Cities 5-24,999
- State Boundaries
 - County Boundaries
 - Toll Roads and Bridges
 - Interstate Highways
 - U.S. Highways
 - State Roads
 - Major Rivers
 - Intermediate Rivers
 - Lakes







Marlinton

55

39

Bath

Warm Springs Warm Springs

92

Hot Springs Site

Millboro

Alleghany

623

White Sulphur Springs

Covington

Clifton Forge

Rockbridge

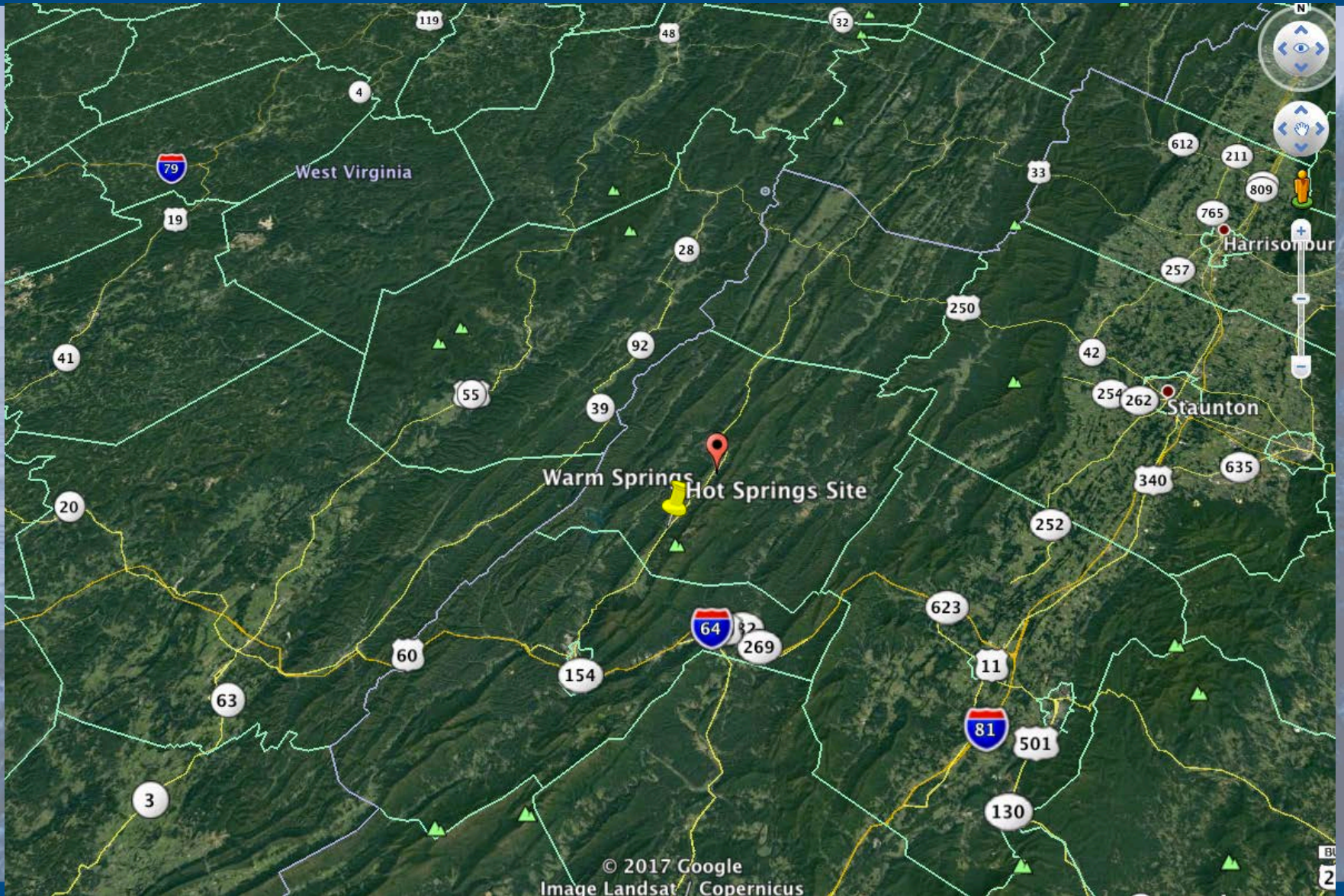
Lexington



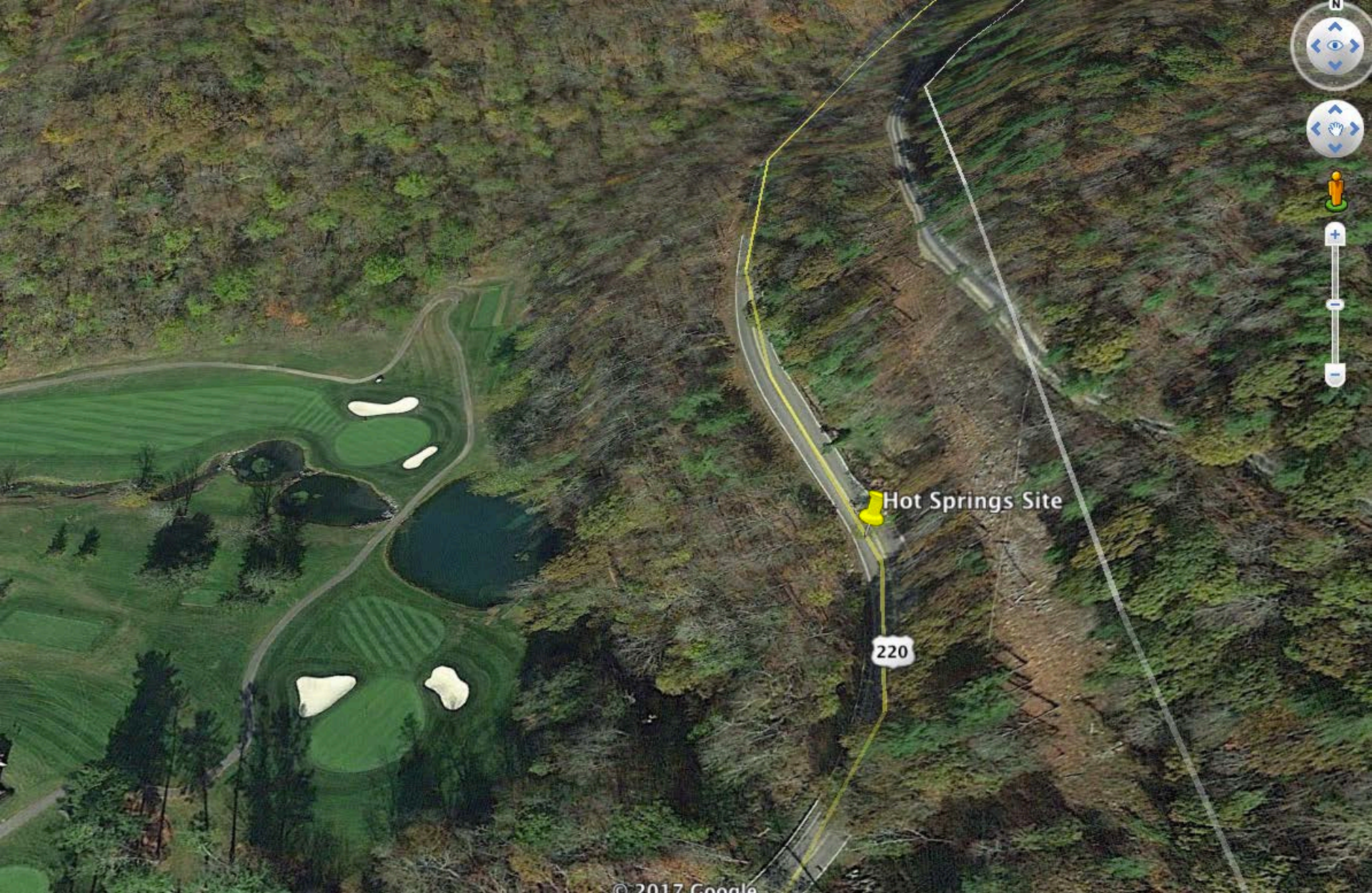
Sam Snead



Valley & Ridge







© 2017 Google



©2017 Google

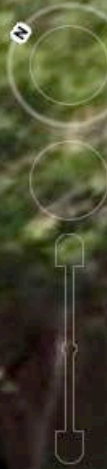
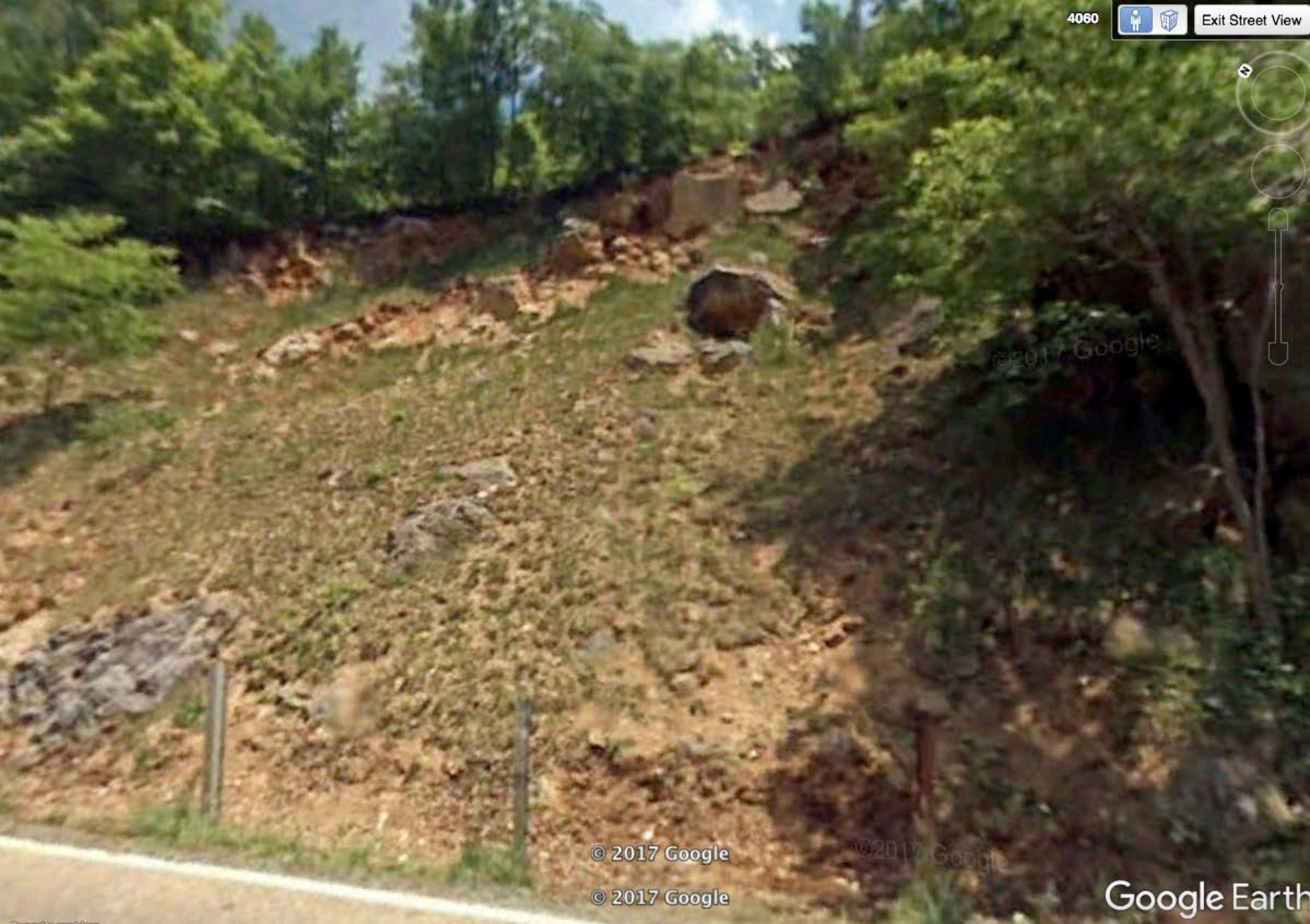


© 2017 Google



Beekmantown Group
Ordovician Limestones





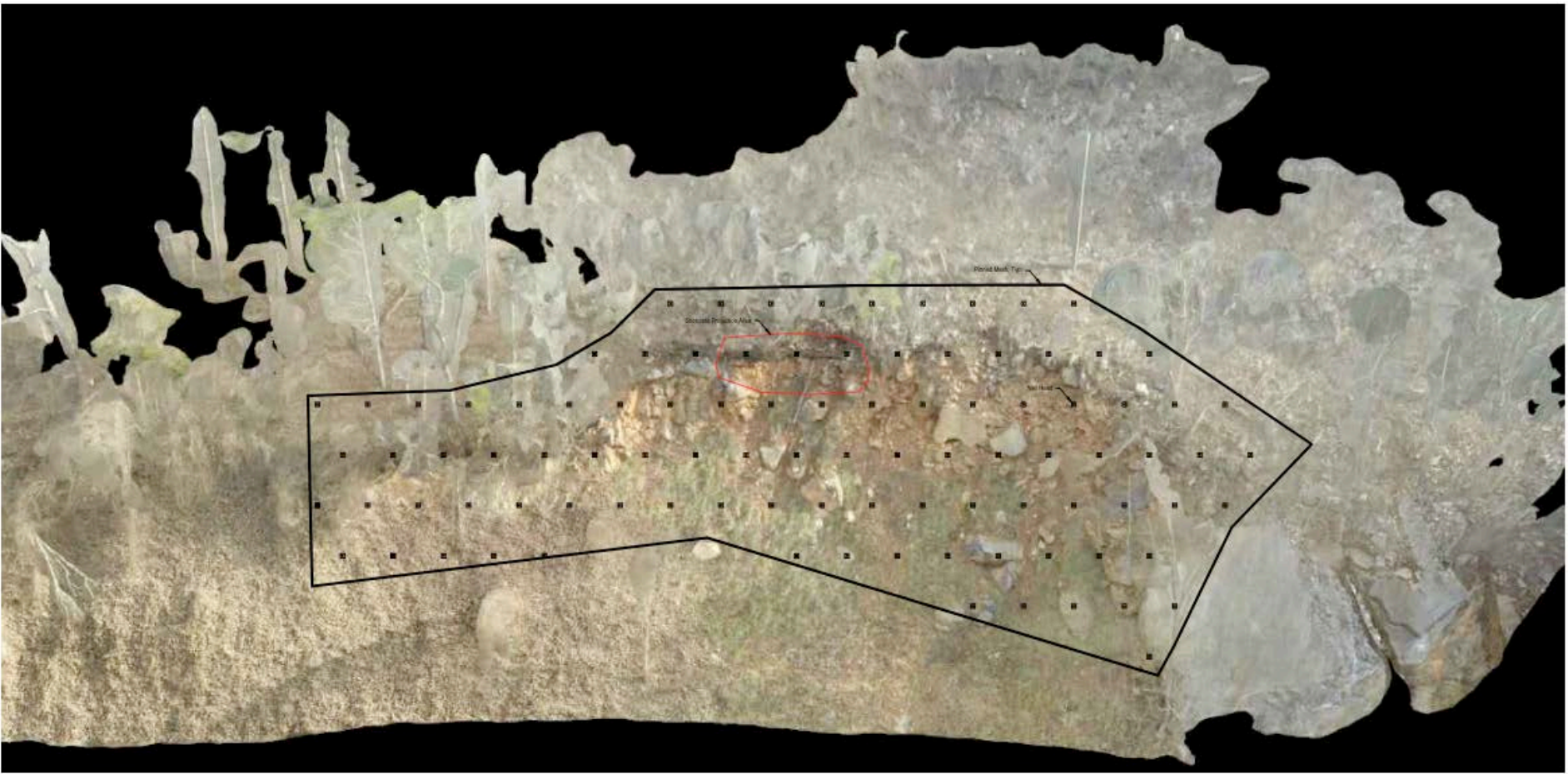
© 2017 Google

© 2017 Google

Google Earth







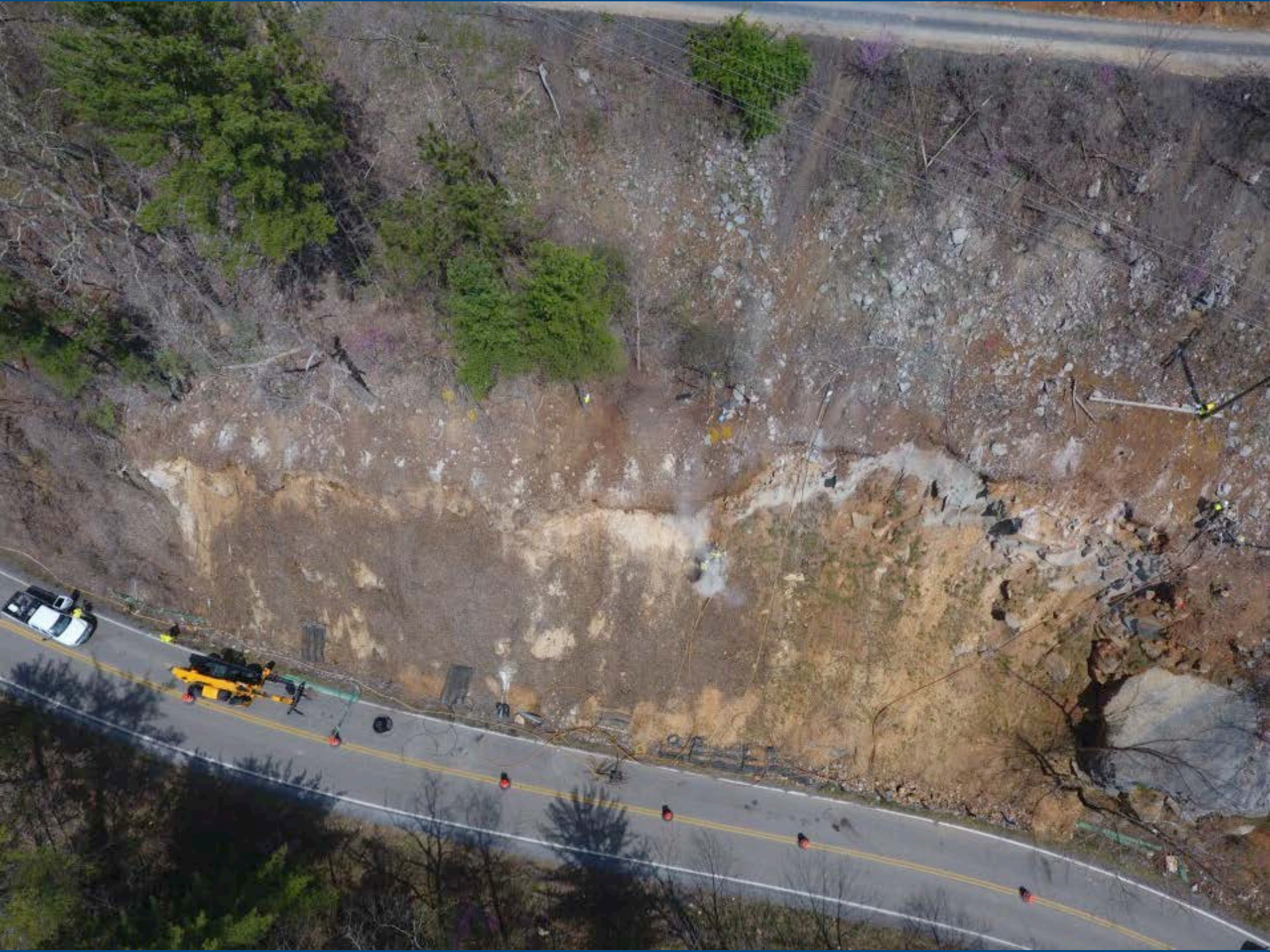
This drawing is furnished solely for the use of or in connection with this project and the proprietary information shown hereon is not to be transmitted to any other organization without specific authorization by GeoStabilization International, (GSI). The design is only valid if constructed and supervised by GSI or its authorized subcontractor.

Sheet Revision	
Date:	By:

Panoramic View			
Project:		Hot Springs, VA	
Date:		Project No.:	
January 5, 2017	Drawn By:	Checked By:	Sheet No.:
	JS	MW	4



GeoStabilization International
 Corporate Address: PO Box 4709
 Grand Junction, CO 81502
 P: 970.210.6170
 F: 970.245.7737
 www.geostabilization.com





















Questions?

- Thank you!

