



EARLY EDUCATION OUTREACH PROGRAM

1 John Marshall Drive . 302 Corbly Hall . Huntington, WV 25755 . (304) 696-6301 . www.marshall.edu/coehs/mueeop

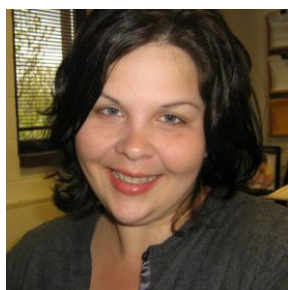
Volume I, Number 3

Fall 2009 Newsletter



The MUEEOP is a service program of the Marshall University
College of Education and Human Services.

From the Director



**Monica DellaMea Harless,
MUEEOP Director**

Greetings everyone! With autumn upon us, I have had the opportunity to travel throughout our beautiful state over the past several weeks for Marshall University Early Education Outreach Program (MUEEOP) events. I am sure many of you would agree that this time of the year is when West Virginia's landscape is particularly stunning with colorful foliage and sights of the season. Stretching from Mineral County to Mingo County (and places in between), I have met with many Outreach Program participants during recent workshops and learning community meetings. Needless to say, it has been a pleasure getting to know so many pre-k educators and administrators during these events!

I have found that regardless of the location, the pre-k educators and administrators I work with seem to share a common set of goals focused around the well-being of the children they serve. Many of them understand that they, as pre-k educators, have the unique opportunity of helping instill positive dispositions to learning in young children. When pre-k children *want* and *love* to learn about the world around them, it is our job to help support these experiences for growth. Moreover, when we understand and implement the philosophy that children learn best by building on their prior knowledge, 21st Century Learning Skills such as critical thinking, problem solving, social competence will flourish!

Please take a few moments to read this newsletter and learn more about the exciting processes that many Pre-k educators and administrators throughout West Virginia are experiencing. As always, please contact me if you would like more information about how the Outreach Program can benefit your early childhood program.

In this issue:

From the Field: Year I Inquiry Support System	3
From the Field: Year II Inquiry Support System	5
From the Field: Differentiated Instruction Professional Development Series	7
Upcoming Events Calendar.....	9
Planning Ahead.....	10
Outreach Program Strategic Plan and Special Recognition.....	12

On the cover:

As part of the 2009-2010 differentiated professional development pilot program offered by the MUEEOP, Mineral County, WV Pre-k educators participate in a role playing session where they assume the roles of young children playing with blocks. The focus of this September 25, 2009 workshop was understanding the many ways block play can heighten 21st Century Learning in the pre-k classroom.

From the Field: Professional Development in Practice
2009-2010 Year I Inquiry Support System

Establishing a Foundation for Inquiry



During the Year I Inquiry Support System Summer Institute in Huntington, WV (July 28-30, 2009), participants completed community resource webs as part of a workshop on building content in the classroom. In this photo, Child Development Academy at Marshall University Director Susan Miller and Pre-k Teacher Amanda Martin discuss their web.



Susanna Wright, Pre-k teacher from Putnam County WV's Tri-County YMCA Childcare collaborative, explores the Kodak EZ-Share C180 she received for her classroom during the Year I Summer Institute. During the institute, participants were provided a digital camera and strategies for using the digital camera with children in their classrooms.

~2009-2010 Year I ISS Participants~

Mark your calendars for the next follow-up workshop/
learning community meeting:

December 4, 2009
Charleston, WV
Holiday Inn Express Civic Center

Follow Up Workshop #2: 9 am-12 pm
Learning Community Meeting #2: 12:30 pm-3 pm

Lunch is provided!

From the Field: Professional Development in Practice
2009-2010 Year I Inquiry Support System

Establishing a Foundation for Inquiry

We welcome the following school systems/agencies to the MUEEOP Community:

2009-2010 Year I Inquiry Support System Participating School Systems/Agencies include

Appalachian Council Head Start
Child Development Academy @ MU
Jackson County Schools
Ritchie County Schools
McDowell County Schools
North Central WV Head Start
Putnam County Schools
Stepping Stones Academy
Tri-County YMCA (Putnam Co.)
Wirt County Schools



During the Year I ISS Follow Up Workshop #1 (October 23, 2009 in Charleston, WV), participants discuss the importance of including children in the planning and assessment processes.



Sharon Togger and Katie Spiker, Year I ISS participants, engage in a reflective activity to identify content standards and objectives which can occur in inquiry-based experiences. The focus on planning for experiences versus planning for skills was emphasized during the institute.

From the Field: Professional Development in Practice
2009-2010 Year II Inquiry Support System

Providing a Framework for Classroom Integration of Project-Based Learning



Greenbrier County Pre-k/Head Start participants April Carter and Gail Ronat engage in a webbing session during the Year II ISS Summer Institute (August 10-11, 2009 at MU). This session was designed to assist participants to better understand the role and function of teacher anticipatory planning with Project work.



During the Year II ISS Summer Institute, Clayton Burch, Early Childhood Coordinator for the West Virginia Department of Education, speaks with the group of pre-k educators in attendance. Burch's address focused on the importance of building intentionality in the classroom.

~2009-2010 Year II ISS Participants~

*The submission period for fall 2009 Project work begins November 16, 2009. Please submit drafts for editing to dellame2@marshall.edu.

*Mark your calendars for the next follow-up workshop:

December 18, 2009
South Charleston, WV
Marshall University Graduate College

10 am- 1 pm
Lunch is provided!

From the Field: Professional Development in Practice
2009-2010 Year II Inquiry Support System

Providing a Framework for Classroom Integration of Project-Based Learning

We are excited to continue our partnership with the following school systems/agencies:

2009-2010 Year II Inquiry Support System Participating School Systems/Agencies include

Appalachian Council Head Start
Greenbrier County Schools/Head Start
Lewis County Schools
Logan County Schools
Putnam County Schools



During the August 10-11 Summer Institute, Year II ISS Participants are welcomed to Marshall University's campus by College of Education and Human Services Executive Dean, Dr. Rosalyn Templeton, and Associate Dean, Dr. Stan Maynard.



Jennifer Reynolds, pre-k educator from Putnam County, WV, shares potential project ideas with the group during a Project Approach fundamentals workshop at the Year II ISS Summer Institute.

2009-2010 Differentiated Instruction Professional Development Series

Personalized Professional Development for Pre-k Educators



Pre-k educators from Mineral County, WV participate in a workshop on incorporating digital technology into the classroom with children. During the September 25, 2009 session, Mineral County provided digital cameras and accompanying materials for all 20 of its classrooms. Developing strategies to encourage children's use of the camera served as a primary focus of this workshop.

McDowell County, WV Pre-k educators participate in a block workshop during their county's summer professional development seminars in July 2009. The MUEEOP workshop focused on the importance of communication and documentation with children in the block area.



Mingo County/Coalfield CAP Head Start Pre-K Educators Judy Starr and Bridgett Blevins engage in a sharing session during an MUEEOP workshop Aug. 28, 2009. Starr and Blevins are COEHS students in the Birth-Pre-K Program.



2009-2010 Differentiated Instruction Professional Development Series

Personalized Professional Development for Pre-k Educators

Pilot Counties for 2009-2010: McDowell, Mineral, and Mingo.

Many participants from McDowell and Mingo Counties experienced the Inquiry Support System during previous school years. Mineral County is new to the MUEEOP Community!



Hands-on professional development opportunities can assist educators by encouraging 21st Century learning skills such as: Collaboration~Critical Thinking~Problem Solving~Self-directed Learning~Creativity



MUEEOP Participants Recognized for Completion of Year I and Year II ISS

Boone County Pre-K Educators were recognized for successful completion of the Year I and Year II Inquiry Support System during a Boone Co. Board of Education meeting earlier this year. In this photo, Boone Co. Pre-k educators are pictured with the MUEEOP Director and Boone Co. Pre-k Coordinator, Ms. Connie Napier.

Mingo County Pre-k Educators were also honored for successful completion of Year I and Year II ISS during a ceremony held for their Board of Education earlier this year.

Upcoming Events Calendar

2009-2010 MUEEOP Anticipated Timeline of Events ~Year I and Year II Inquiry Support System ~Differentiated Professional Development Workshop Series

Year	Month	Date(s)	Event/Place
2009	November	13	Differentiated PD Series Workshops: Mingo County/Coalfield CAP HS (Williamson, WV 9 am-12 pm; 12pm-3 pm)
		16	ISS YEAR II: Fall 2009 Project Rough Drafts accepted for feedback
		18	Differentiated PD Series Presentation @ WV Head Start Association State Conference (Charleston, WV 1-4 pm)
		TBA	ISS YEAR I: Learning Community Meeting—CDA@MU (CDA@MU time TBA)
	December	4	ISS YEAR I: Follow Up Workshop # 2 (Charleston, WV Holiday Inn Express 9 am-12 pm) ISS YEAR I: Learning Community Meeting—Appalachian Council HS; Putnam, Jackson, Roane, McDowell, Wirt, & Ritchie Counties (Charleston, WV Holiday Inn Express 12 pm-3 pm)
		18	ISS YEAR II: Follow-Up Workshop #2 (Marshall University Graduate College—South Charleston Campus 9 am-12 pm)
21		ISS YEAR II: Fall 2009 Project Submissions Due	
2010	January	20	Differentiated PD Series Workshops: Mineral County (Keyser, WV 8:30 am-11:30 am)
		29	ISS YEAR I: External Reflections Due
		29	Differentiated PD Series Workshops: Mingo County/Coalfield CAP HS (Williamson, WV 9 am-12 pm; 12pm-3 pm)
	February	5	ISS YEAR II: Follow-Up Workshop #3 (Putnam Co. Board of Ed. 10 am- 1pm)
		12	ISS YEAR I: Follow-Up Workshop # 3 (Charleston, WV Holiday Inn Express 9 am-12 pm) ISS YEAR I: Learning Community Meeting—Wirt & Ritchie Counties (Charleston, WV Holiday Inn Express 12 pm-3 pm)
		26	Differentiated PD Series Presentation @ Celebrating Connections WV Early Childhood Conference (Charleston, WV Time TBA)
		26	ISS YEAR II: Spring 2010 Project Rough Drafts accepted for feedback
	March	5	ISS YEAR I: Learning Community Meeting—Appalachian Council HS; Putnam, Jackson, Roane, McDowell, & Boone Counties (AFL-CIO App. Council HS Trades Building 9 am-12 pm)
		TBA	ISS YEAR I: Learning Community Meeting—CDA@MU (CDA@MU time TBA)
		12	Differentiated PD Series Workshops: Mingo County/Coalfield CAP HS (Williamson, WV 9 am-12 pm; 12pm-3 pm)
		19	Differentiated PD Series Workshops: Mineral County (Keyser, WV 9 am-12 pm; 12:30 pm-3:30 pm)
		PENDING	Differentiated PD Series Workshops: RESA VII
		26	ISS YEAR II: Spring 2010 Project Rough Drafts accepted for feedback
	April	PENDING	Differentiated PD Series Workshops: RESA VII
		30	ISS YEAR I: External Assignments Due
		30	Differentiated PD Series Workshops: Mingo County/Coalfield CAP HS (Williamson, WV 9 am-12pm; 12 pm-3 pm)
	May	7	ISS YEAR I: Follow-Up Workshop # 4/ ISS Recognition Ceremony (Charleston, WV Holiday Inn Express 9 am-12 pm)
21		ISS YEAR II: Spring 2010 Project Submissions Due	
		ISS YEAR II: Presentations to County Boards of Education (or Head Start Agency Administrators)	

Be sure to access the MUEEOP website (www.marshall.edu/coehs/mueeop) for additional information about the services offered through the MUEEOP.

Planning Ahead:
Differentiated Instruction Professional Development for WV Pre-K Educators—

The MUEEOP has embarked on the development of a workshop series which is currently being piloted in three WV Counties this school year. Collaborations with Mingo, Mineral, and McDowell Counties have been formed to provide pre-k educators with individualized professional development. Depending on the unique needs of potential participants, each workshop can be ½ or a full day. A per participant fee applies for all workshops.

A comprehensive menu of workshops has been developed to provide multiple professional development options. Collaboration with the MUEEOP can help school systems/pre-k agencies meet the goals established in their county pre-k plans.

For additional information about the menu of workshops and possible participation in the Professional Development Workshop Series, please contact the MUEEOP.

Attention MUEEOP Participants:

Call for photos

Share the learning opportunities/experiences occurring in your classroom with others in the MUEEOP Community.

After photo permission forms have been distributed and returned from families, please feel free to share your classroom photos demonstrating 21st Century learning. You can:

~Email them to the MUEEOP Director (dellame2@marshall.edu), or

~Log in to our online learning forum (<http://mueeop.wetpaint.com>) and post on your program's page.

Please include a description of each photo to assist with the creation of shared meaning.

Thank you!

Planning Ahead: Inquiry Support System

It is not too early to begin thinking about your professional development needs for the 2010-2011 school year. Interested administrators and educators are encouraged to contact the MUEEOP director, Monica Harless, at dellame2@marshall.edu or phone (304) 696-6301.

Information about the Inquiry Support System is highlighted below.

Inquiry Support System Year I—10 months of sustained professional development designed to assist educators as they learn to implement 21st Century, inquiry-based learning into their classrooms

Components:

Summer professional development institute
Four Follow-Up Workshops during the school year
Three Learning Community Meetings during the school year
Online support through an interactive forum
Administrator/ECERS-R Evaluator components
Principal's workshop
Individualized assistance as needed
Opportunities to earn staff development credit through MU (up to 6 hours) OR the opportunity to earn 3 hours of letter-graded credit

All participants receive:

A digital camera, memory card, battery charger, and carrying case
Hands-on training to assist with integration of the digital camera into the classroom
Content Module to assist with implementation of 21st Century, inquiry-based learning
Participant Resources Notebook
Strategic Plan
Tote Bag

County/Agency Sponsorship Per Participant for Year I: \$400
There is no charge for administrators to attend the ISS institute, workshops, or meetings.

Inquiry Support System Year II—10 months of sustained professional development designed for Pre-K educators who excelled in the Year I ISS process

Components

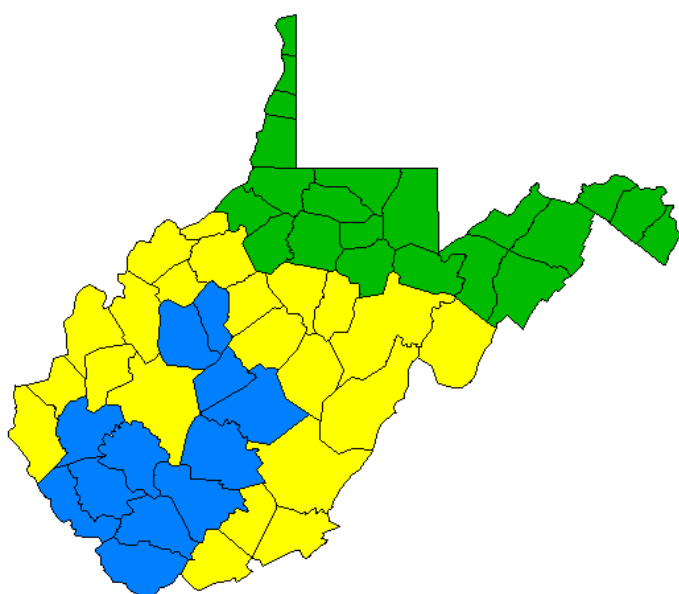
Summer professional development institute
Three Follow-Up Workshops during the school year
Online support through an interactive forum
Individualized assistance as needed
Opportunities to earn staff development credit through MU (up to 3 hours)

All participants receive:

A digital camera, memory card, battery charger, and carrying case
Hands-on training to assist with integration of the digital camera into the classroom
Content Module to assist with implementation of 21st Century, inquiry-based learning and the Project Approach
Textbook: Young Investigators: The Project Approach
Strategic Plan
Tote Bag

County/Agency Sponsorship Per Participant for Year I: \$400
There is no charge for administrators to attend the ISS institute or workshops.

MUEEOP Inquiry Support System Strategic Plan



MUEEOP Phases:

- Phase I (2006 –2008)
- Phase II (2008 – 2010)
- Phase III (2010 – 2012)

Phases indicate the timeframe the ISS is first available to counties. Beginning in 2010, the ISS moves into Phase III, meaning that the Program is available for all 55 WV Counties.

◆ **Phase I Counties:**

Boone, Calhoun, Clay, Fayette, Lincoln, Logan, McDowell, Mingo, Nicholas, Raleigh, Roane, Wyoming

◆ **Phase II Counties:**

Braxton, Cabell, Gilmer, Greenbrier, Jackson, Kanawha, Lewis, Mason, Mercer, Monroe, Pendleton, Pleasants, Pocahontas, Putnam, Randolph, Ritchie, Summers, Upshur, Wayne, Webster, Wirt, Wood

◆ **Phase III Counties:**

Barbour, Berkeley, Brooke, Doddridge, Grant, Hampshire, Hancock, Hardy, Harrison, Jefferson, Marion, Marshall, Mineral, Monongalia, Morgan, Ohio, Preston, Taylor, Tucker, Tyler, Wetzel

Special Recognition

The MUEEOP would like to provide a very special thank you to the Claude Worthington Benedum Foundation for its generous award which provides funding for implementation of the Inquiry Support System professional development model. The Benedum Foundation is a philanthropic agency serving Southwestern Pennsylvania and West Virginia. For more information about the Benedum Foundation, please visit www.benedum.org to learn about the meaningful projects they support in our region.

Additionally, the Program thanks participating County School Systems and their collaborative Head Start agencies for additional sponsorship which makes the program possible. Financial support from the Benedum Foundation and participating agencies has resulted in the formation of numerous partnerships with WV County school systems and their collaborative agencies. Since the Program’s initial Benedum funding in July 2006, the Program has served pre-k educators and administrators from the following counties/agencies:

Boone County Schools	Mineral County Schools/Head Start	Appalachian Council Head Start
Clay County Schools	Mingo County Schools	CASE WV Head Start
Greenbrier County Schools/Head Start	Nicholas County Schools/Head Start	CDI Head Start
Jackson County Schools	Putnam County Schools	Coalfield Com. Action Head Start
Lewis County Schools	Ritchie County Schools	Northwestern WV Head Start
Lincoln County Schools	Roane County Schools	Southwestern Com. Action Head Start
Logan County Schools	Wirt County Schools	MU Early Education Center
McDowell County Schools	Wyoming County Schools	Child Development Academy at MU
		West Virginia Even Start