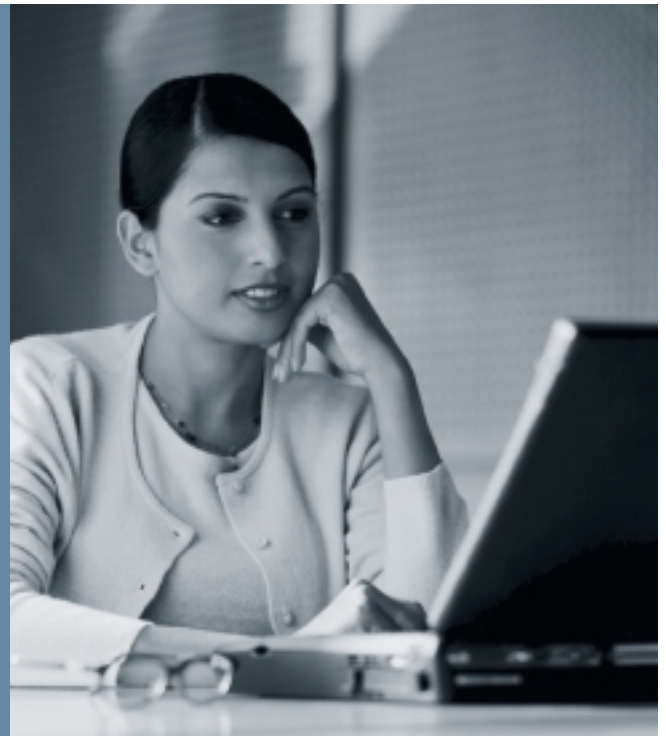


# 9 New Mutual Fund Choices For Your Retirement Plan.

*Available January 1, 2003*



*Announcing TIAA-CREF Investment Solutions™*



## On January 1, 2003, TIAA-CREF Investment Solutions™ Offers Employees of the West Virginia Higher Education System A Variety of New Investment Opportunities

Large-Cap Value Fund

Growth & Income Fund

Mid-Cap Value Fund

Real Estate Securities Fund

Mid-Cap Growth Fund

International Equity Fund

Small-Cap Blend Fund

Social Choice Equity Fund

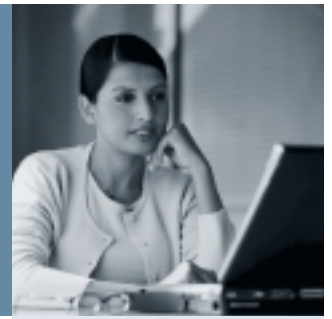
S&P 500 Index Fund

**You'll have all 9 new TIAA-CREF mutual funds available to you, plus the 10 fixed and variable TIAA-CREF annuity accounts you have always had.**

Our new funds focus on specific investment categories – international, large, medium and small capitalization, growth and value funds, a blended fund (made up of a mixture of growth and value stocks), plus a real estate securities fund, and a social choice fund.

While you already have the ability to diversify your portfolio with the TIAA-CREF fixed and variable annuity accounts, our nine new mutual funds help you to diversify further within the equities asset class.

*Enjoy the benefits of TIAA-CREF Investment Solutions.<sup>TM</sup>  
Available January 1, 2003*



The funds emphasize the same principles used in managing the TIAA-CREF fixed and variable annuity accounts:

- Low-cost, high-quality investment choices
- Fully invested in the designated type of stock
- Diversification across several asset classes

**TIAA-CREF's Asset Allocation Services**, an added service from TIAA-CREF, will help you automatically rebalance your TIAA-CREF retirement investments at periodic intervals.

You can achieve the level of diversification that suits your retirement investment goals, your way. With nine new mutual fund investment choices plus professional asset allocation guidance at no extra charge, you can build a more focused portfolio for your retirement investments.

**Watch Your Mail** for a TIAA-CREF information packet with more details about our nine new investment choices.

Find out more about TIAA-CREF Investment Solutions<sup>TM</sup> and the Asset Allocation Services. Call TIAA-CREF Enrollment Hotline **(800 842-2888)** weekdays from 8:00 a.m. to 10:00 p.m. ET, or Saturdays from 9:00 a.m. to 6:00 p.m. ET.

TIAA-CREF Individual and Institutional Services, Inc. and Teachers Personal Investors Services, Inc. distribute securities products. For more complete information on securities products, please call 800 842-2776, ext. 5509, for prospectuses. Read them carefully before you invest. TIAA (Teachers Insurance and Annuity Association), New York, New York, and TIAA-CREF Life Insurance Co., New York, New York, issue insurance and annuities.

©2002 Teachers Insurance and Annuity Association-College Retirement Equities Fund (TIAA-CREF), New York, NY 10017