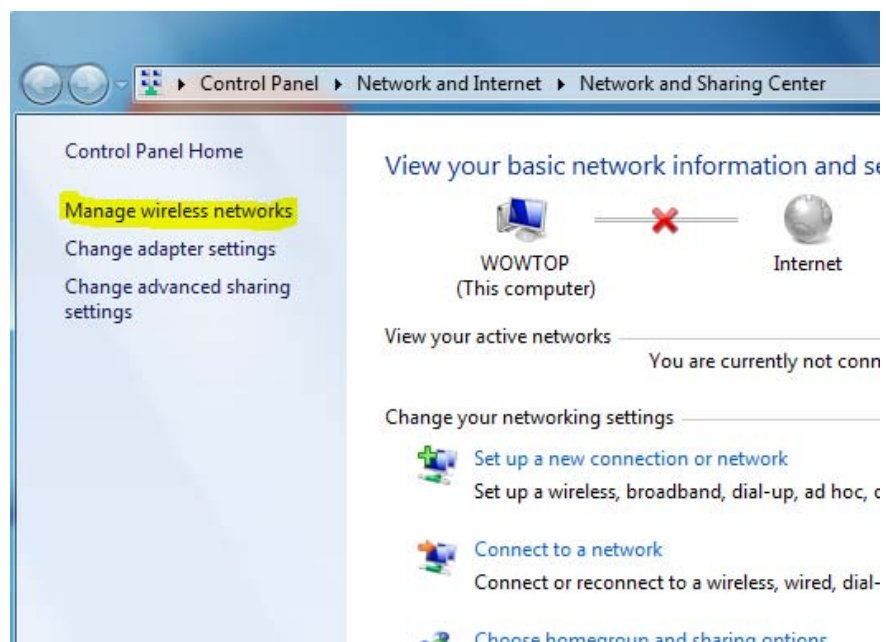


## Connecting to the MU WiFi network

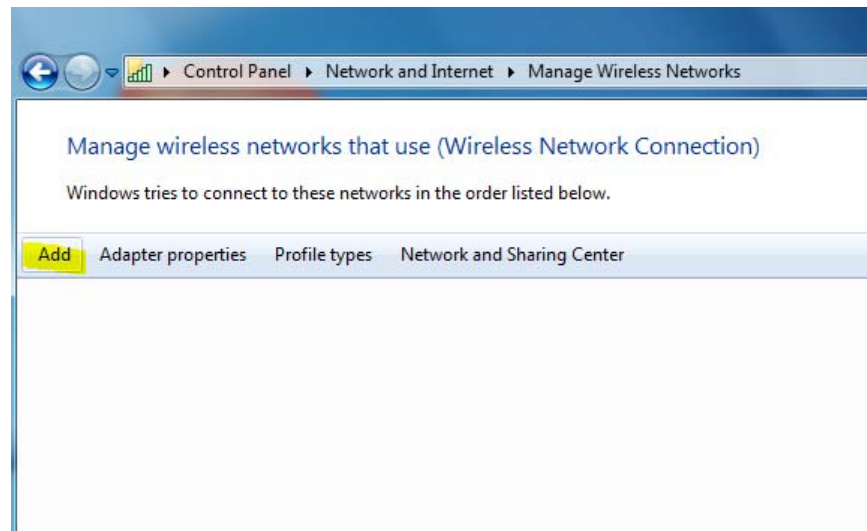
First, click on your Network icon in the lower right-hand corner of your screen, and choose to **Open Network and Sharing Center**.



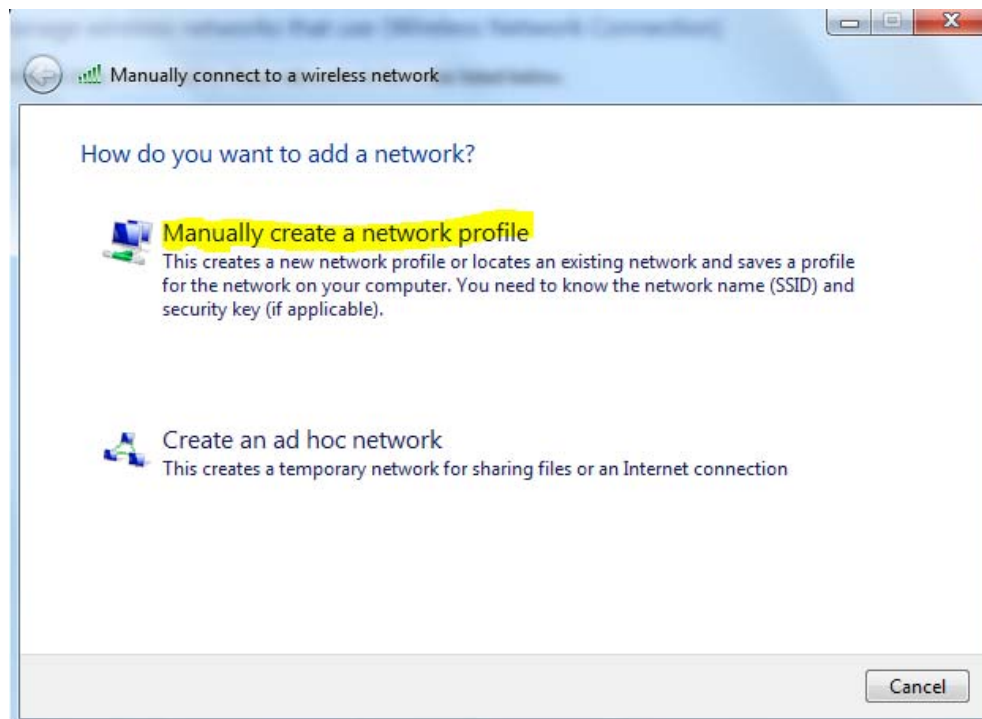
Once there, you want to locate the **Manage Wireless Networks** option in the left-hand Pane.



Click **Add** to start the network configuration wizard.



You should specify that you want to manually configure this connection.



When presented with the form below, make each field match the values displayed in this illustration (the Network name: **MU WiFi** is case sensitive). Then, hit Next:

Manually connect to a wireless network

Enter information for the wireless network you want to add

Network name: MU WiFi

Security type: WPA2-Enterprise

Encryption type: AES

Security Key:   Hide characters

Start this connection automatically

Connect even if the network is not broadcasting

Warning: If you select this option, your computer's privacy might be at risk.

Next Cancel

It will act as though the wizard is finished, but you need to click the **Change Connection Settings** button when it appears.

Manually connect to a wireless network

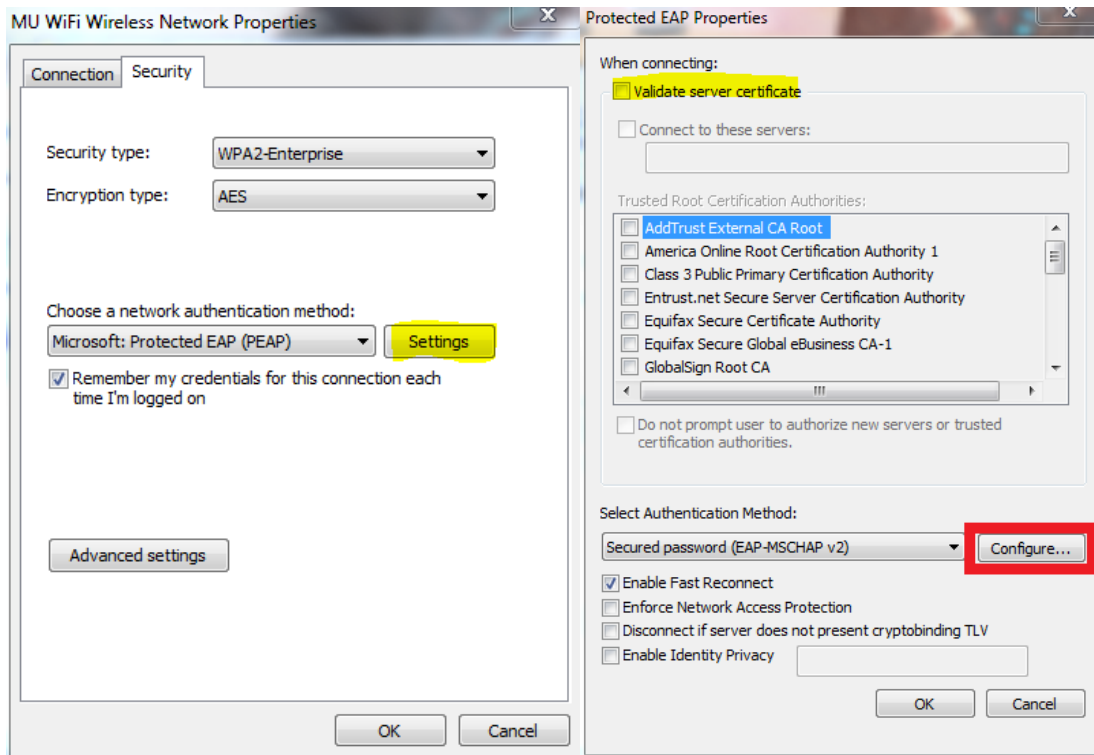
Successfully added MU WiFi

→ Change connection settings

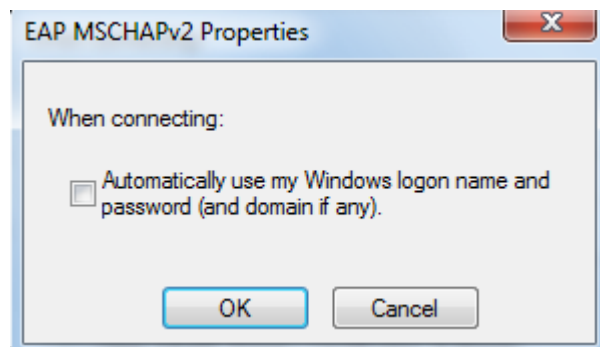
Open the connection properties so that I can change the settings.

Close

On the Network Properties screen, you want to choose the **Security** tab, and hit **Settings**. Uncheck the box for “Validate server certificate” on the next screen, and then hit the **Configure** button under “Select Authentication Method”.

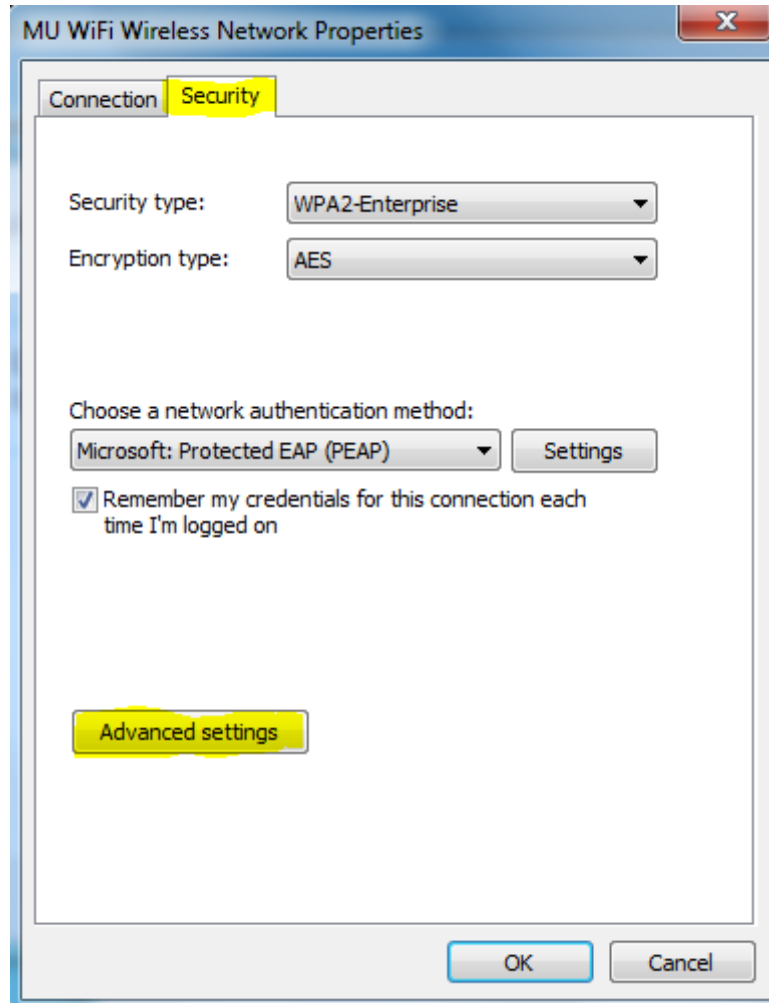


You'll want to uncheck the box here for using your “Windows logon name” when connecting.

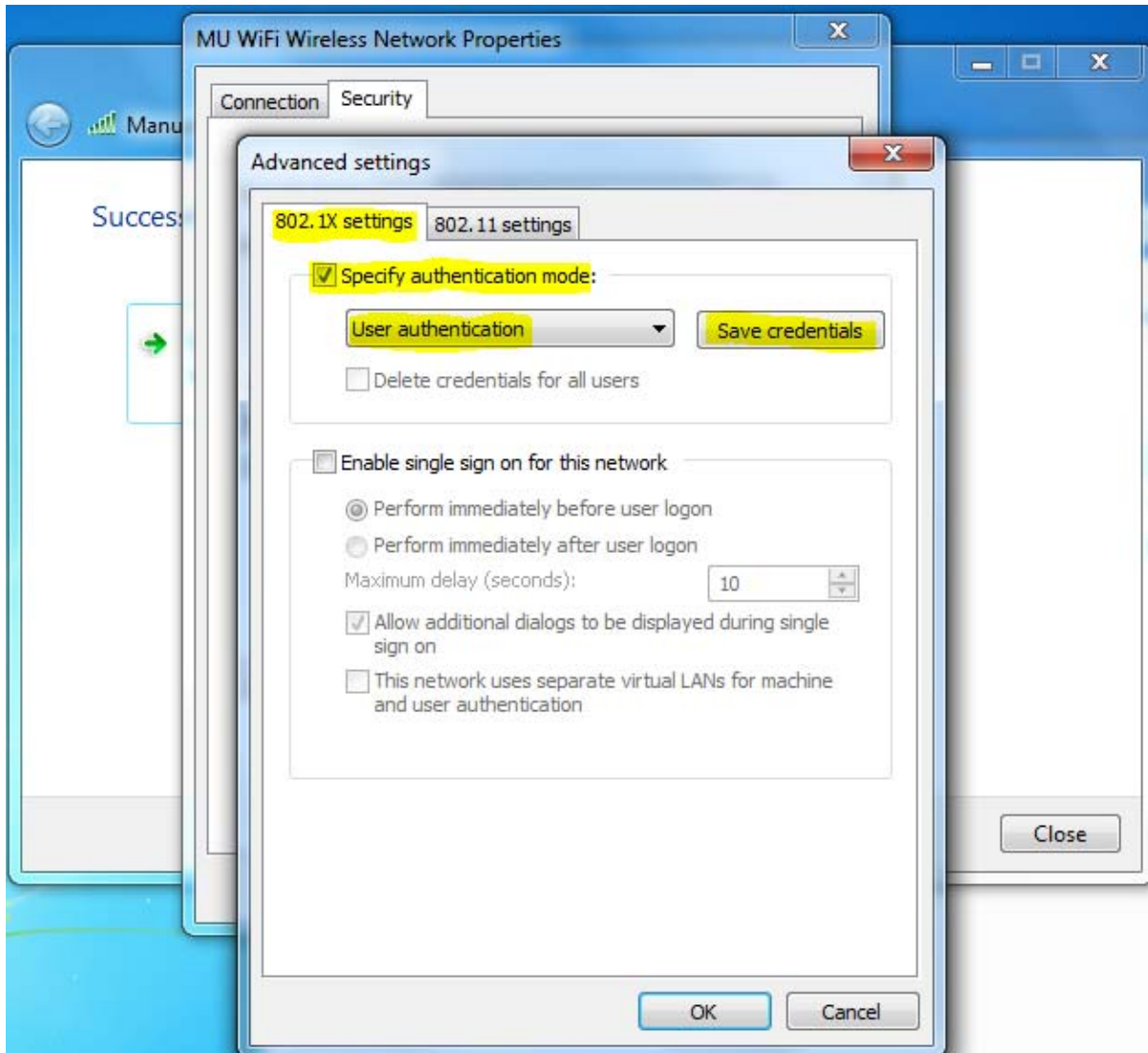


Once you've done that, just keep hitting **Ok** until you are back at the “MU WiFi Wireless Network Properties” screen.

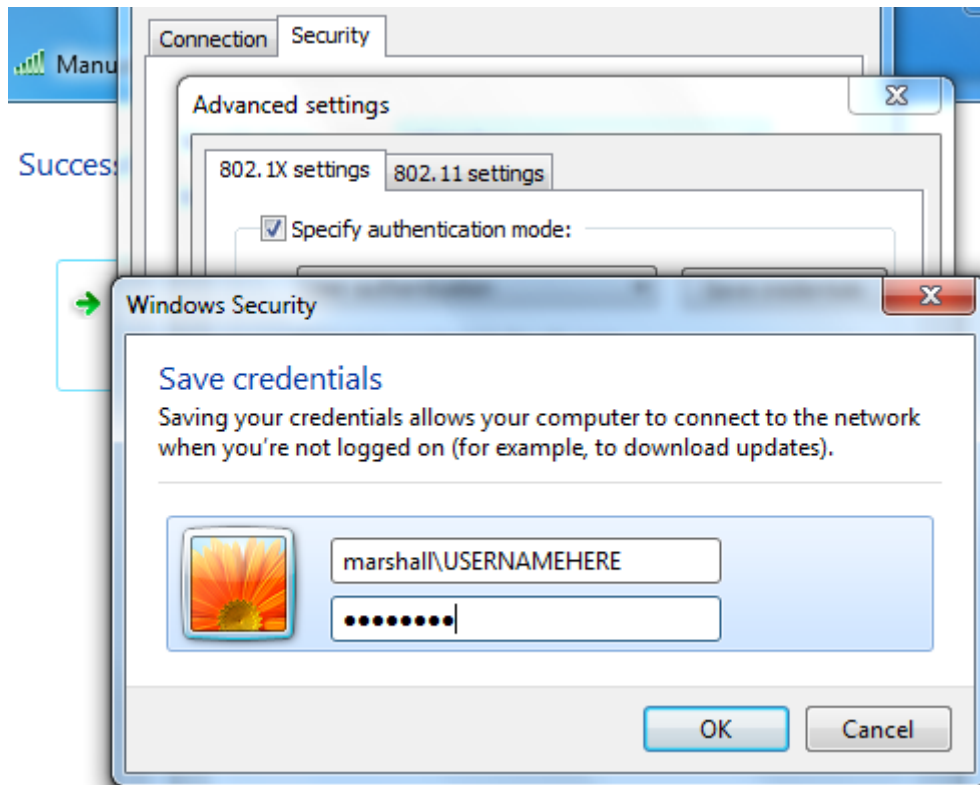
You should still be on the **Security** tab here, so just make sure the Network Authentication method is set to use **(PEAP)**, and the “Remember my credentials” box is checked. Then, hit the **Advanced Settings** button.



On the “Advanced Settings” screen, make sure you are on the **802.1x settings** tab, and check the ‘Specify authentication mode” box. Choose “User Authentication” from the list, and hit the **Save Credentials** button.



It will ask you for a username and password. Make sure you use the **marshall\username** format when entering your Marshall University username, as in the illustration here:



When this step is complete, you simply have to hit **Ok** on each window to close them, until you're back at the "Change Connection Settings" page, where you click **Close** to finish this process.

If you click your Network Connection icon again (from the very first step) you should see the MU WiFi network, and it should automatically start trying to connect. If you have any trouble, you can contact our IT Servicedesk for assistance with the information here:

IT Service Desk  
[Servicedesk@marshall.edu](mailto:Servicedesk@marshall.edu)  
304-696-3200

Live support: 8:00am – 9:00pm through the week

Returning Emails and Voicemails only: 12:00pm – 9:00pm Saturdays; 1:00pm – 9:00pm Sundays.