

Sustainability: The Triple Bottom Line





- **92% of technical staff are LEED APs**
- **13 LEED projects, from Certified to Platinum**
- **Governor's Award for Outstanding Achievement in Environmental Stewardship**
- **3 Ohio Governor's Awards for Excellence in Energy Efficiency**
- **6 Columbus Chapter AIA Sustainability Awards**
- **ASHRAE National Energy Award**

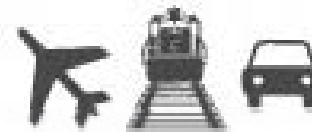
Sustainability

Sustainability

The ability of a society, ecosystem or other ongoing system to continue functioning into the indefinite future, without being forced into decline through exhaustion or overloading of the key resources on which that system depends.



Buildings
49%



Transportation
28.2%

Industry
22.7%



U.S. Energy Consumption by Sector

Source: ©2010 2030, Inc. / Architecture 2030. All Rights Reserved.
Data Source: U.S. Energy Information Administration (2009).

IMPACTS OF U.S. BUILDINGS ON RESOURCES

40% primary energy use*

72% electricity consumption*

39% CO₂ emissions*

13.6% potable water consumption**

Sources:

*Environmental Information Administration (2008). EIA Annual Energy Outlook.

** U.S. Geological Survey (2000). 2000 data.







Columbus, Ohio
Humid Continental



Miami
Tropical Monsoon



Los Angeles, California
Subtropical Mediterranean



New York City, New York
Humid Subtropical







Grinnell Gl, Glacier Nat. Park, 1911. Nat. Park Service



Grinnell Gl, Glacier Nat. Park © 2010 Bränsch • worldviewofglobalwarming.org



Sources: E. Oehler, Kilimanjaro, 1911



















GLENWOOD'S NEW LUXURY RENTAL
PHASE II GRAND OPENING



emerald green



STYLISHLY GREEN,
ELEGANTLY GLENWOOD

EMERALD GREEN IS LEED CERTIFIED (LEADERSHIP IN ENERGY AND ENVIRONMENTAL DESIGN)
TWO 25-STORY RENTAL RESIDENCES WITH 24-HR DOORMEN · 24-HR ATTENDED INDOOR GARAGE
BUILDING-WIDE WATER FILTRATION SYSTEM · STATE-OF-THE-ART FITNESS CENTER · 50-FT LAP POOL & SPA
YOGA ROOM · UNIQUE GREEN GARDEN & FOUNTAIN · WASHER/DRYER IN EVERY APT

STUDIO from \$2,595 · STUDIO with HOME OFFICE from \$2,795
1 BR from \$2,995 · 1 BR/2 BATH with HOME OFFICE from \$3,895
2 BR/2 BATH from \$4,495 · 2 BR/2 BATH with LARGE TERRACE from \$5,495
IMMEDIATE OCCUPANCY AVAILABLE · NO FEE

emerald green

320 WEST 38TH ST, WEST OF 8TH AVE · 212.695.3838 · emeraldgreennyc.com
OPEN DAILY 10AM-6PM · FREE PARKING WHILE VIEWING MODEL APARTMENTS



GLENWOOD
BUILDER | OWNER | MANAGER

OFFICE SPACE FOR LEASE

Highly Secure, Environmentally
Friendly, and Affordable!

- 375 & 355 E Street, SW
- Class A Office Space
- 701,000 SF
- Pre-Certified LEED Silver

FOR LEASING INFORMATION CALL
202-337-1025

Trammell Crow Company
Building value.

The Princeton Review's

GUIDE TO 311 GREEN COLLEGES

Presented in partnership with the U.S. Green Building Council



2011 Edition



- 311 school profiles cover Green highlights on the nation's most eco-friendly campuses, featuring everything from solar panel study rooms to fair-trade fashion.
- Get each school's vital stats on sustainability, including Green majors, Green job placement, getting around Green on campus, and more.
- Includes special features on outstanding examples of living and learning Green on campus.



OBERLIN COLLEGE

101 NORTH PROFESSOR STREET, OBERLIN COLLEGE, OBERLIN, OH 44074
ADMISSIONS: 440-775-8411 • **FAX:** 440-775-6905 • **FINANCIAL AID:** 440-775-8142
E-MAIL: COLLEGE.ADMISSIONS@OBERLIN.EDU • **WEBSITE:** WWW.OBERLIN.EDU/SUSTAINABILITY



GREEN HIGHLIGHTS

Oberlin College has no problem taking a proactive approach to the environment. It was one of the first four institutions of higher learning in the nation to sign ACUPCC. In line with this, the college is working actively to address sustainability issues on campus by conducting a greenhouse gas inventory and offering a course in Campus Sustainability, which aims to educate students in green related issues. Currently, 40 percent of Oberlin's energy consumption comes from renewable resources, and the college has determined that all new construction and major renovation on campus will receive LEED Silver certification. The Adam Joseph Lewis Center for Environmental Studies is, not surprisingly, the greenest building on campus, featuring roof-mounted solar panels, recycled and environmentally friendly materials, a heating system that incorporates geothermal wells, and The Living Machine, an "ecologically-engineered system that combines elements of conventional wastewater technology with the purification processes of wetland ecosystems to treat and recycle the building's wastewater." Oberlin also boasts robust composting and recycling programs. The recycling program, in particular, is unique in that it focuses not just on cans, glass, and plastic, but also clothing and even carpets! Oberlin has developed a Campus Resource Monitoring System, which allows students, faculty, and administration to monitor energy use in the dorms, allowing the college to hold a yearly competition to see which dorm can reduce its energy consumption—and thereby its carbon footprint—the most. First-year students who live in Robert Kahn Hall, the newest residence on campus, have pledged to make environmental sustainability a way of life.

Green Facts

% food budget spent on local/organic food	45
Available transportation alternatives:	
bike share/jent, car share	
School has formal sustainability committee	Yes
Environmental studies degree available	Yes
Environmental literacy requirement	No
Public GHG inventory plan	No
% of school energy from renewable resources	40
School employs a sustainability officer	Yes
School provides guidance on green jobs	Yes
% school cleaning products that are green-certified	90
% school grounds maintained organically	10

Student Body

Total undergrad enrollment	2,888
# of applicants	7,227
% of applicants accepted	33
Average HS GPA	3.6
Range SAT Critical Reading	660-720
Range SAT Math	630-720
Range SAT Writing	650-740

Cost

Annual tuition	\$39,686
Required fees	\$518
Room and board	\$20,480
% of students receiving need-based scholarship or grant aid	56

THE OHIO STATE UNIVERSITY—COLUMBUS

UNDERGRADUATE ADMISSIONS: 110 ENARSON HALL, 154 W. 12TH AVENUE, COLUMBUS, OH 43210
ADMISSIONS: 614-292-3980 • **FAX:** 614-292-4818 • **FINANCIAL AID:** 614-292-0300
E-MAIL: ASKABUCKEYE@OSU.EDU • **WEBSITE:** HTTP://EE.OSU.EDU/SUSTAINABILITY

GREEN HIGHLIGHTS

The Ohio State University is going above and beyond to ensure that the buildings on its campus are operating sustainably. The university's Building Energy Auditing Program has led to the purchase of 3.3 million kilowatt hours of green power—the maximum permitted. The campus is shoring up that cash investment with a Scarlet Gray and Green campaign that emphasizes behavior modification with regard to energy use, through signage and pledges. In addition, all new construction on campus must be built to LEED certification, and there is a minimum requirement for recycling construction waste. Off the construction site, OSU's "All-In-One" campus recycling system has helped the school achieve a 20 percent waste diversion rate. Dining Services gets in on the action by allotting almost a quarter of its food expenditures to local/organic sources, which translates to just more than \$3 million annually. OSU has a great number of world-class faculty members engaged in sustainability research. Multiple institutes on campus are dedicated to the practice of sustainability research such as the OSU Center for Resilience and the OSU Institute for Energy and the Environment. More than 100 sustainability courses are currently being offered. Half the students travel to class using alternative transportation, thanks to a free on-campus bus service and discounted public transit passes. The career services office of the College of Engineering puts forth a concerted effort to find firms offering green jobs and pair them with students seeking internships and interviews following graduation.

Green Facts

% food budget spent on local/organic food	20
Available transportation alternatives:	
free bus pass, universal access transit pass, restricting parking, car share, vanpool, market based pricing (hourly parking costs), guaranteed ride home	
School has formal sustainability committee	Yes
With participation from	
New construction must be LEED-certified or comparable third-party rating system	Yes
Waste diversion rate (%)	20
Environmental studies degree available	Yes
Environmental literacy requirement	No
Public GHG inventory plan	Yes
% of school energy from renewable resources	3
School employs a sustainability officer	Yes
School provides guidance on green jobs	Yes
% school cleaning products that are green certified	
% school grounds maintained organically	

Student Body

Total undergrad enrollment	39,065
# of applicants	18,256
Average HS GPA	
% of applicants accepted	76
Range SAT Critical Reading	540-650
Range SAT Math	580-690
Range SAT Writing	540-640

Cost

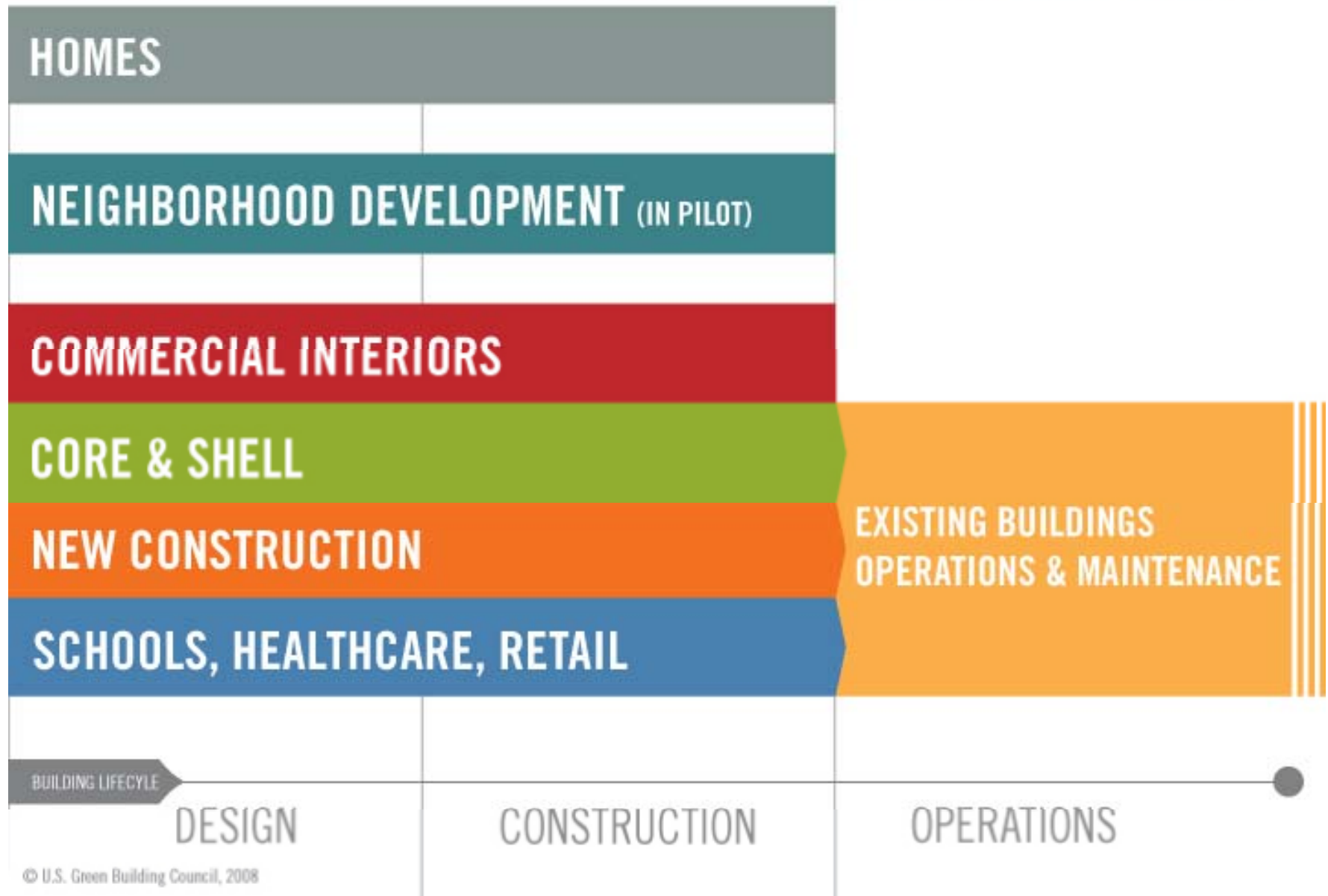
% of students receiving need-based scholarship or grant aid	33
---	----

41
COOPER
SQUARE





LEED address the complete lifecycle of buildings:



© U.S. Green Building Council, 2008

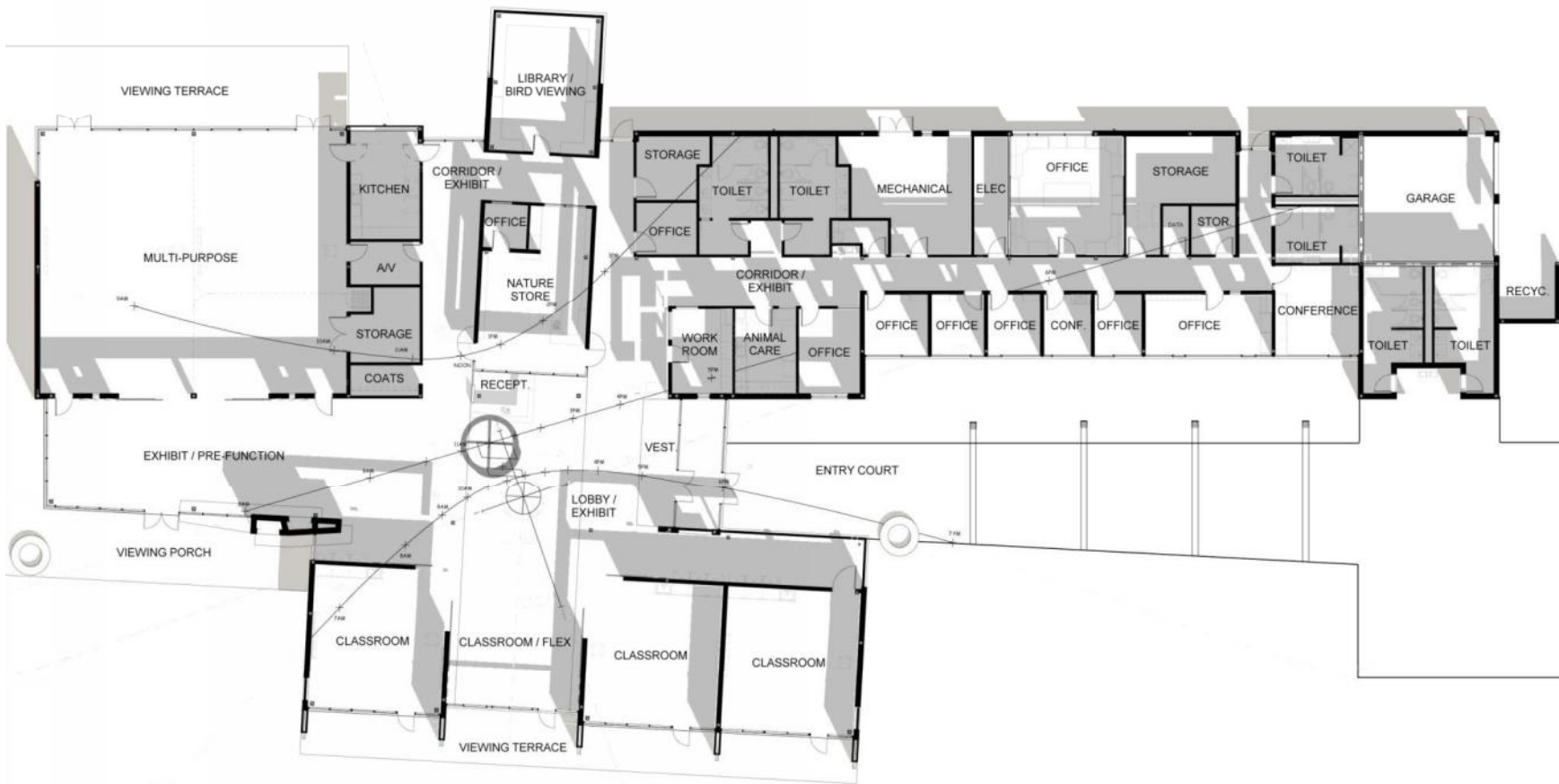


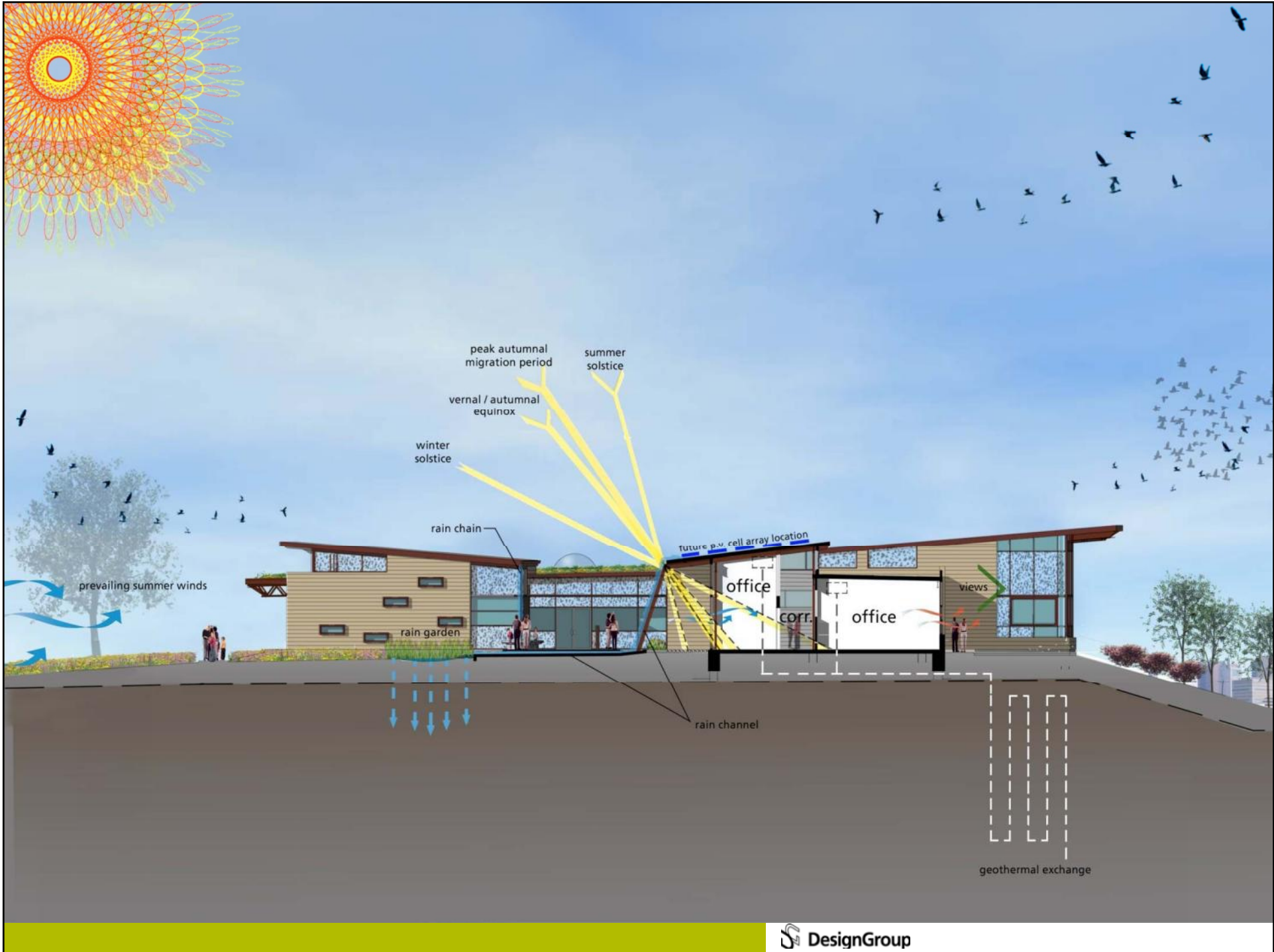






Grange Insurance Audubon Center | Columbus, Ohio

















New Dining Commons | BGSU, Bowling Green, Ohio





Hocking College Energy Institute | Logan, Ohio





HOCKING COLLEGE
ENERGY INSTITUTE

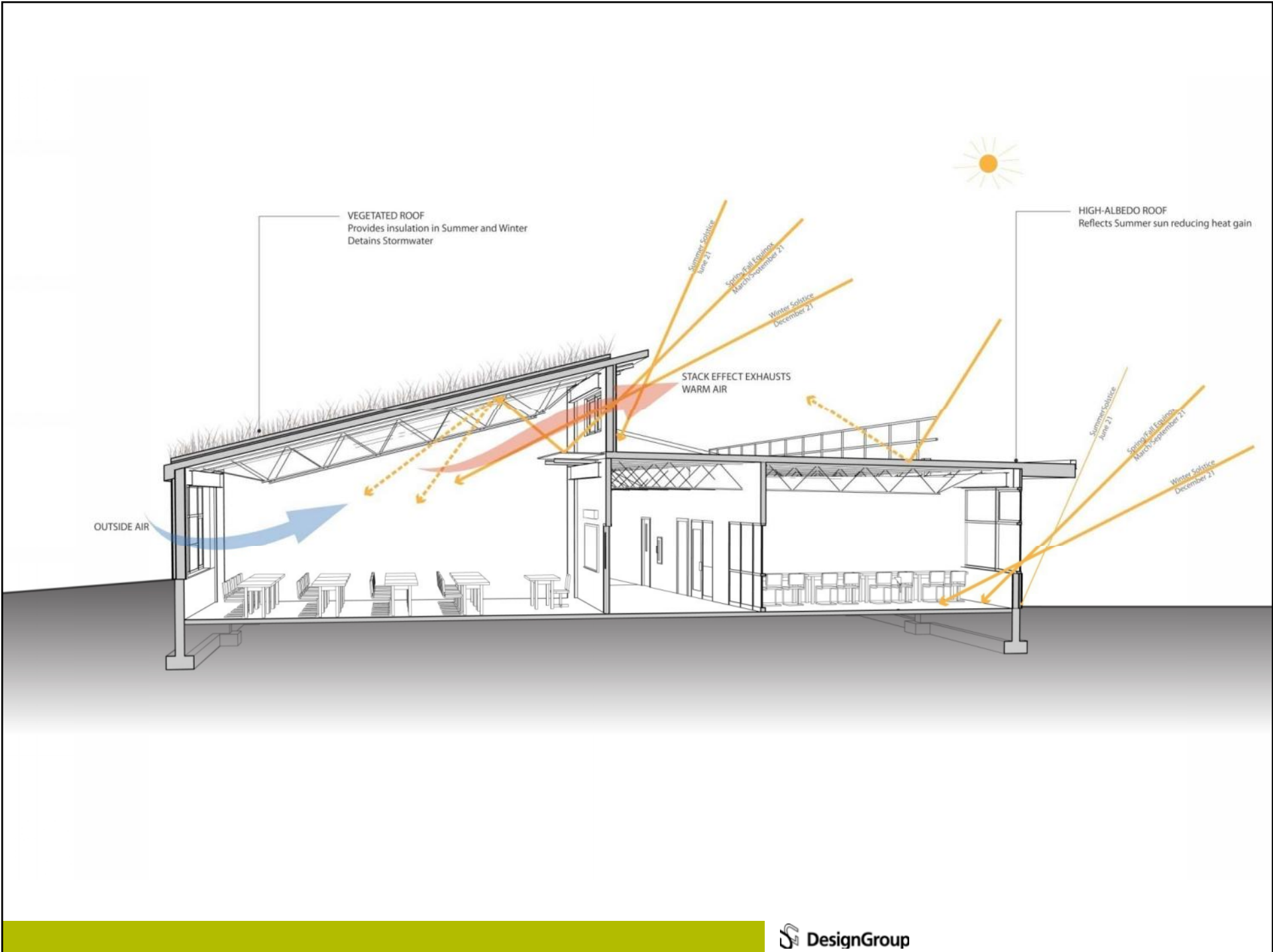
WINTER
WINDS

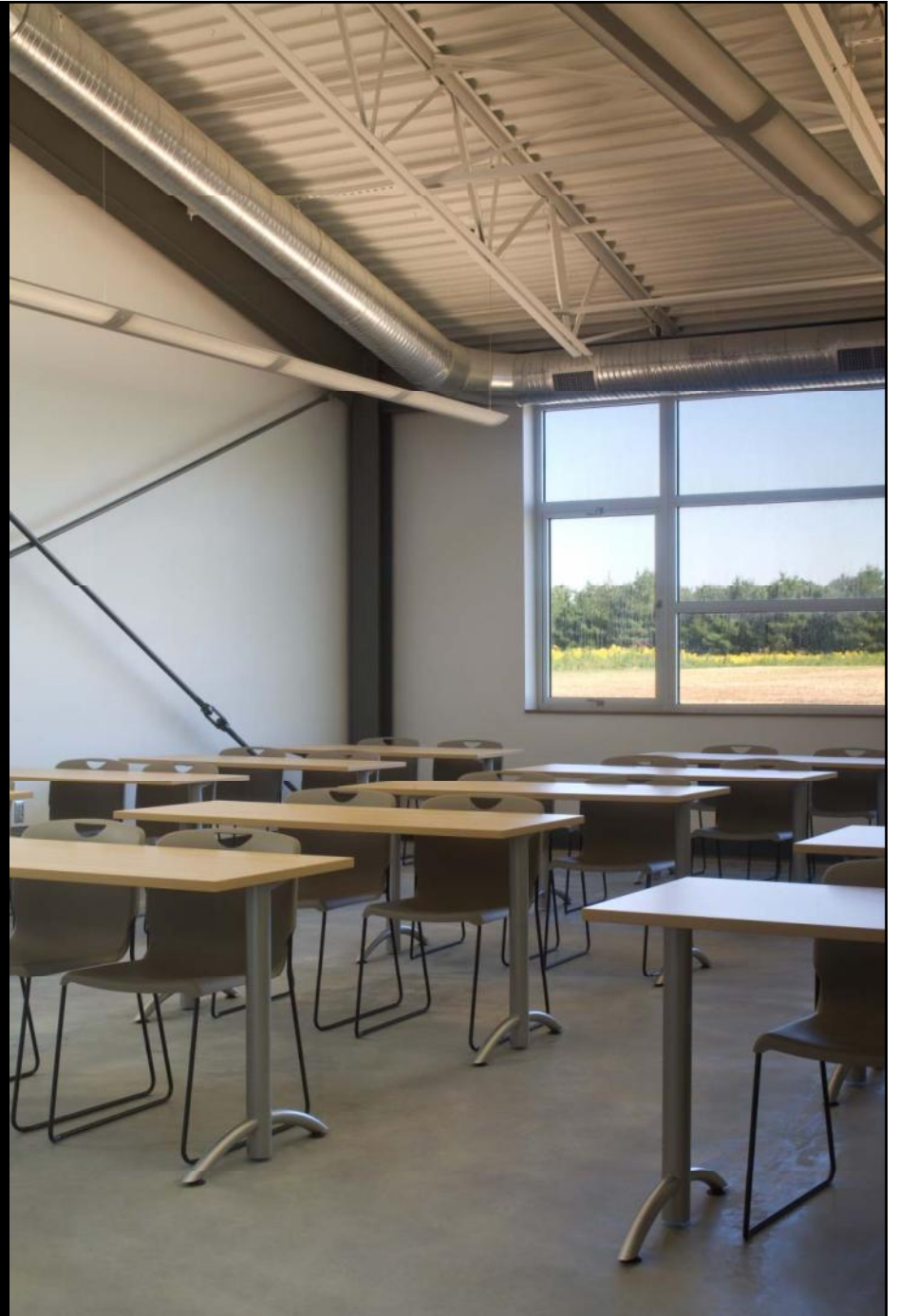
SUMMER
BREEZES

WINTER SUN DEC 21

SUMMER SUN JUNE 21

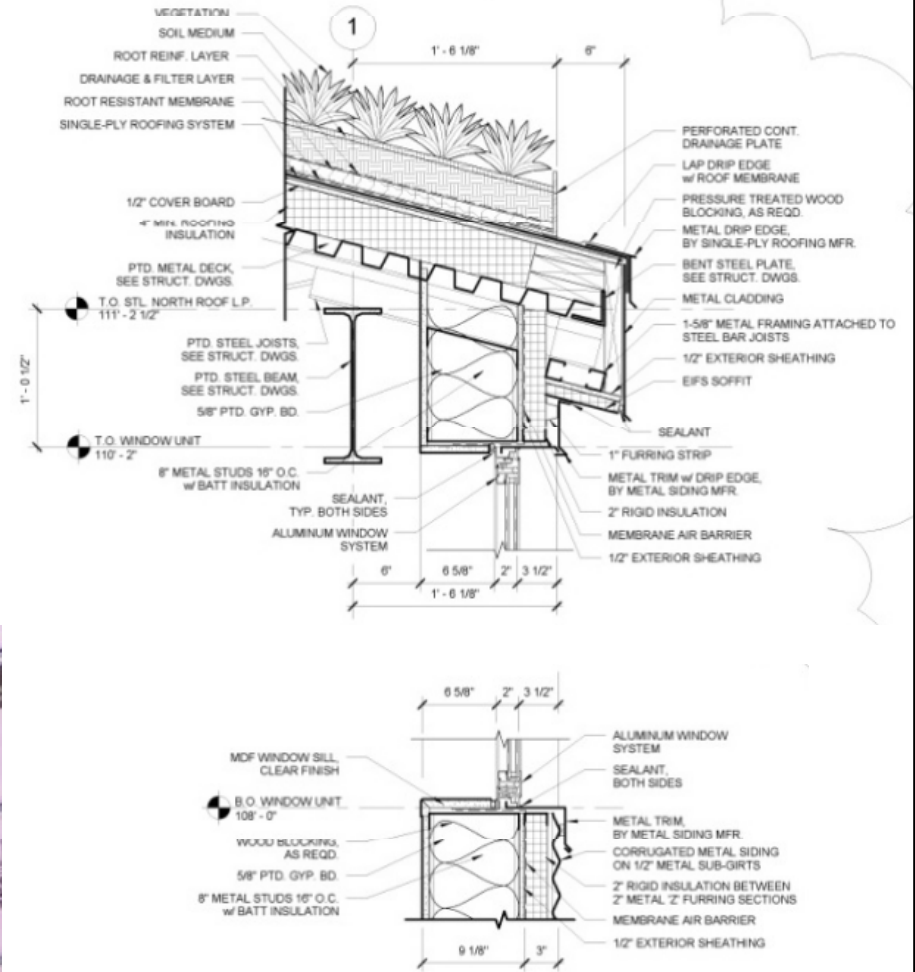
















Contact Information:
Jennifer Horvath
Business Development Leader
jhorvath@designgroup.us.com
614-225-0515

