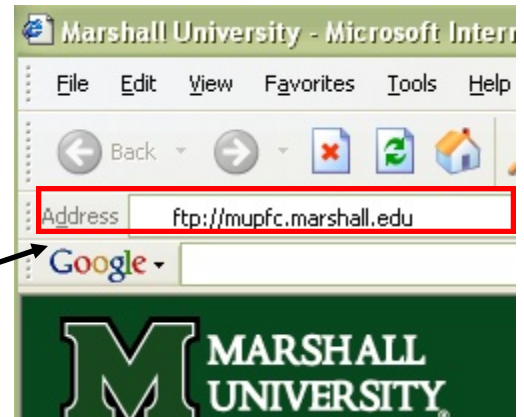


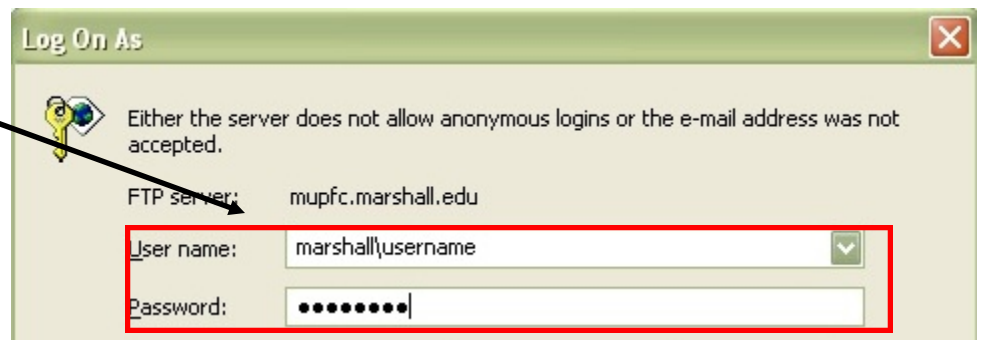
Creating Your Personal Web Folder

Marshall University allows students, faculty and staff space to create a personal webpage. This guide provides instruction on creating the personal web folder.

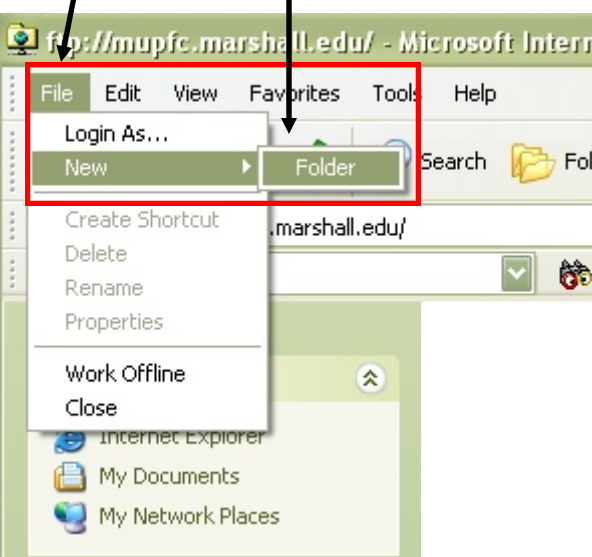
For those logging on to university computers, just access your V drive through the "My Computer" icon. For those not logged on to a university computer, enter the address <ftp://mupfc.marshall.edu> into the address bar of your browser.



A login window will appear. Enter your username and password in this format, then click the "Log On" button on the bottom right.



The contents of your V drive appears. You will need to click on the "File" menu and choose "New" and "Folder".



Name the new folder "public_html" and you are ready to create and publish your personal web page.

