

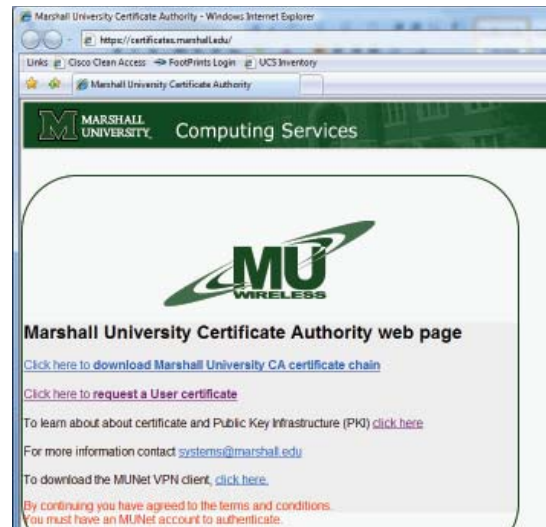
Marshall University

Certificate Installation On a Windows Mobile Device with 802.11g Wireless Capabilities.

802.1x can only be used with an 802.11g device.

Installing User Certificate

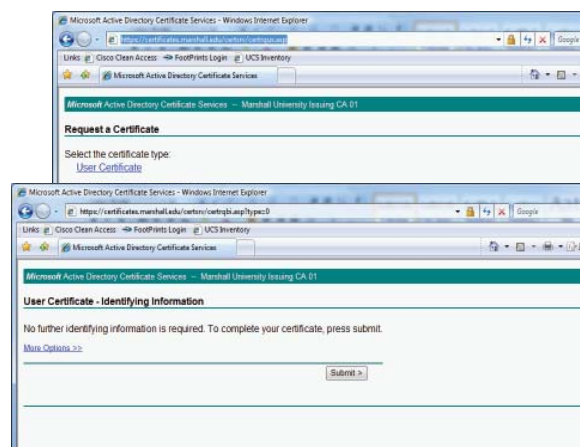
Step 1. Open a web browser. In the address bar type <http://certificates.marshall.edu>. It should display the web page you see below. Click on **“Click here to request a User certificate”**.



Step 2. You will now see the dialog box below and will need to login using your Marshall Username and password. **Enter your username as follows:** marshall\username and then your password.

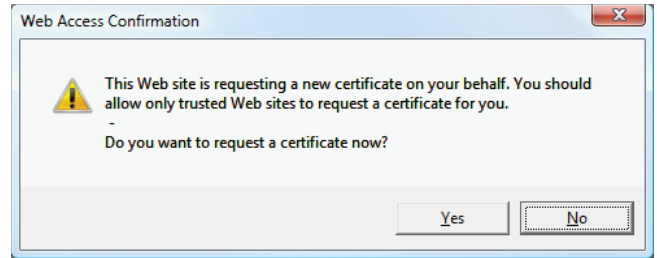


Step 3. You should now see the web page below. Click on **“User Certificate”**.

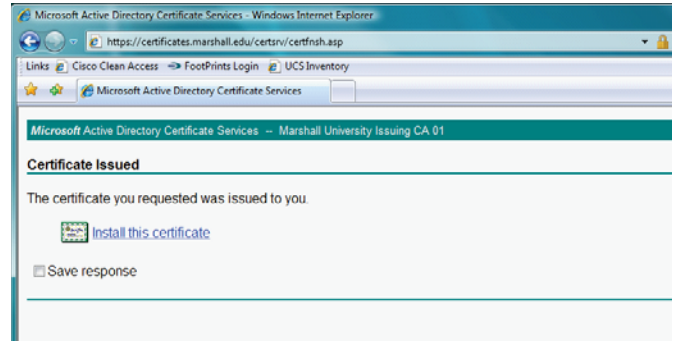


Click on the **“Submit”** button.

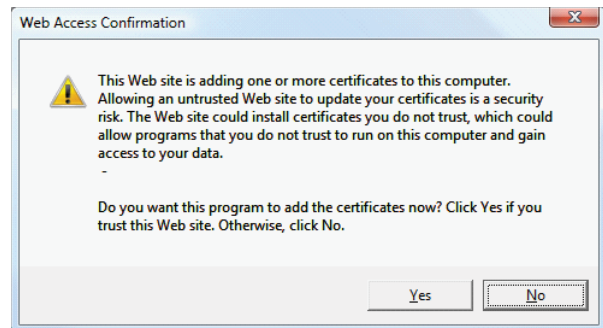
Step 4. You may see the dialog box below. If you do click on **“Yes”** to continue.



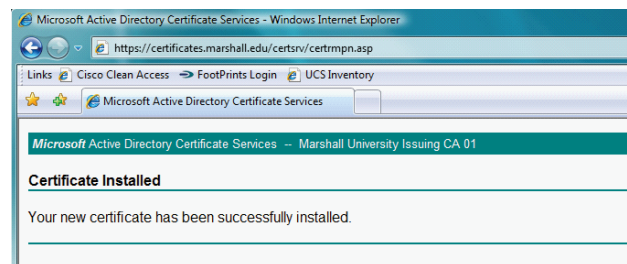
Step 5. You should now see the web page below. Click on **“Install this certificate”** to install the user certificate.



Step 6. You should now see the dialog box below. Click on **“Yes”** to continue and install the certificate.



Step 7. You should now see the web page confirming that you have installed the certificate.

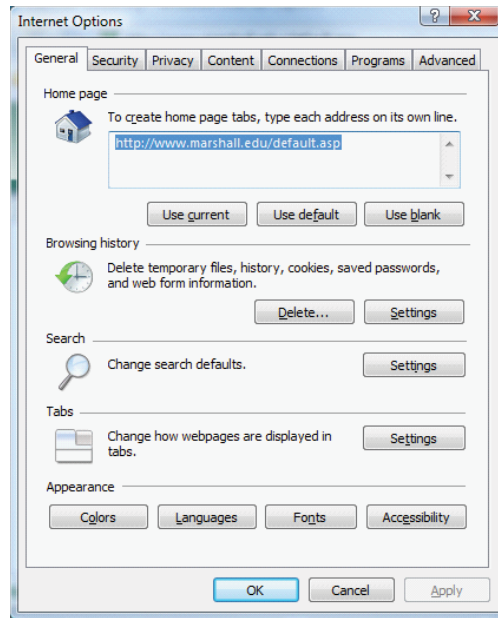


Exporting User Certificate

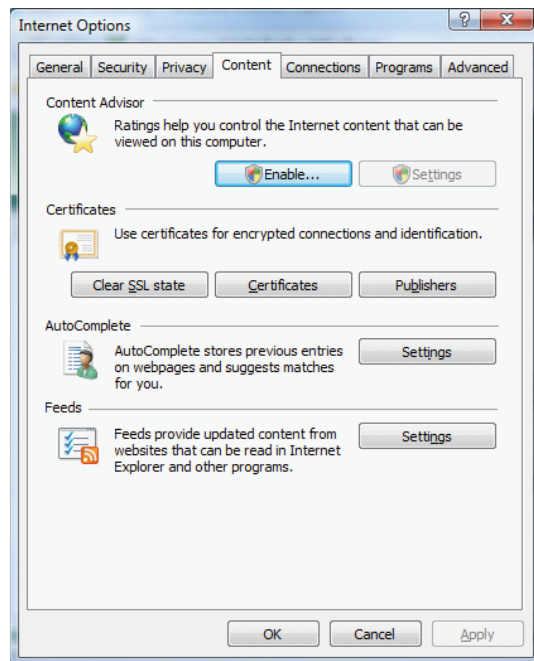
Step 1. Open your web browser. Using Internet Explorer 7, click the down arrow next to **“Tools”** and click on **“Internet Options”**:



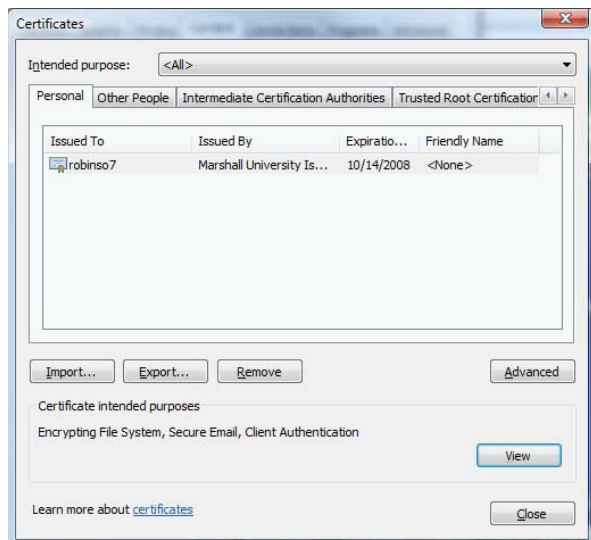
Step 2. You should see the dialogue box below



Step 3. Click on the **“Content”** tab.



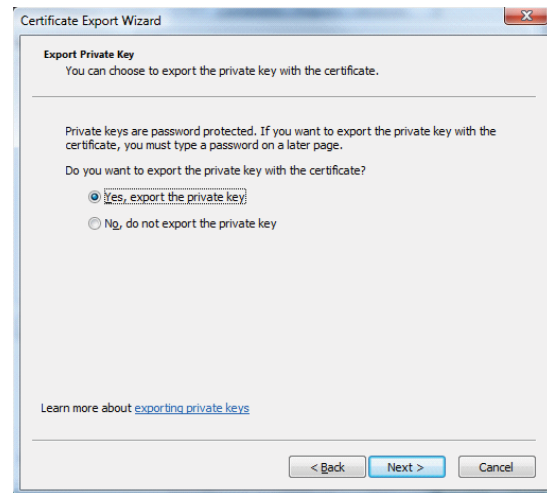
Step 4. Under the Certificates section click on the **“Certificates”** button. You should see the dialogue box below.



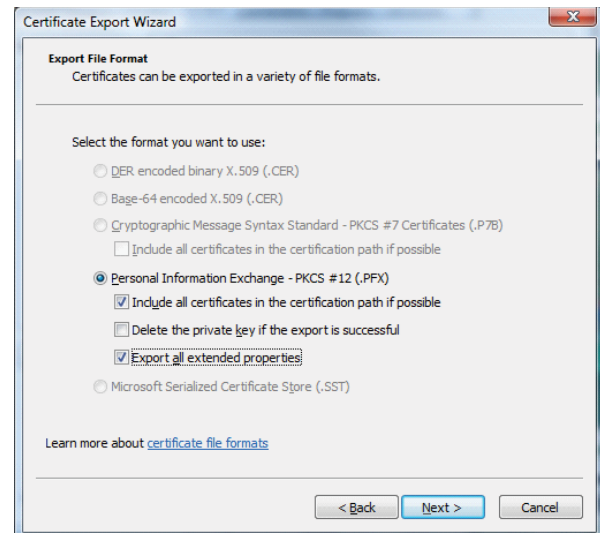
Step 5. Highlight the certificate associated with your username and click on the **“Export”** button. You should see the Certificate Export Wizard dialogue box similar to the one below. Click **“Next”** to continue.



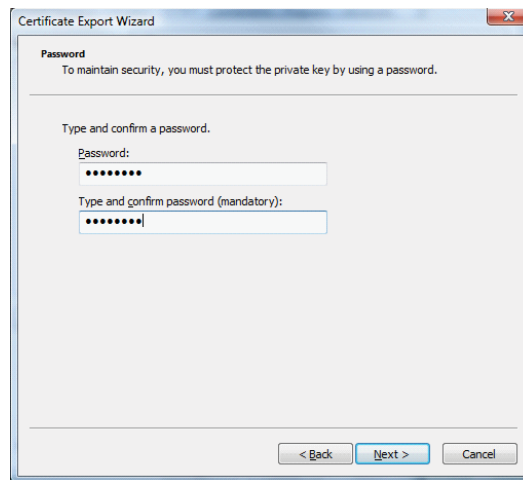
Step 6. Click on the **“Yes, export the private key”** radio button and then click **“Next”**.



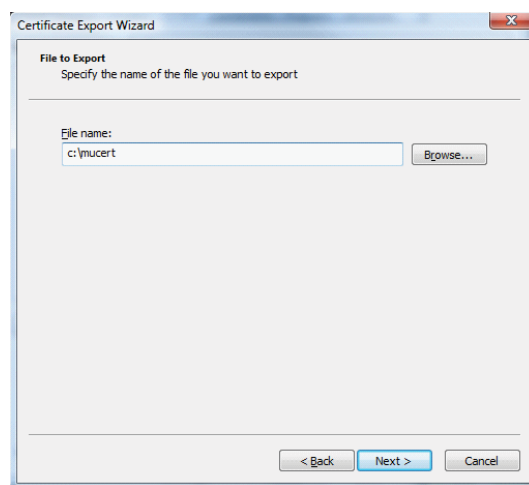
Step 7. Under the Personal Information Exchange – PKCS #12 (.PFX) section click in the boxes that say something similar to the ones shown below. Click **“Next”** to continue.



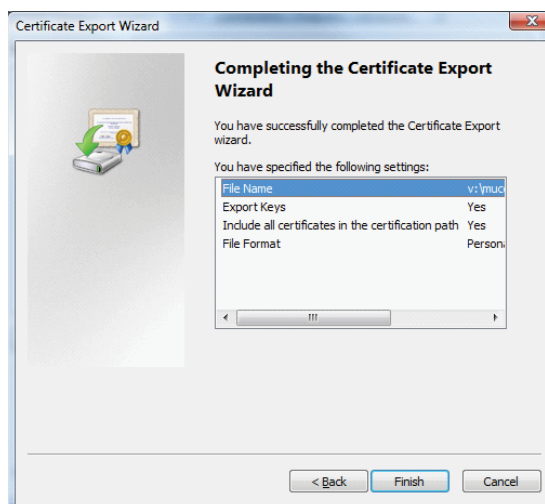
Step 8. Type and confirm an easy to remember password (This Password is only for the protection of the Certificate. It is NOT tied to anything else.). Click **"Next"** to continue.



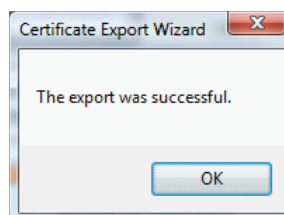
Step 9. Specify the Path and Filename (Something that is easy to remember and specifies what the file is.). Windows Vista will not allow you to save to the root of the C drive. Click **"Next"** to continue.



Step 10. You should now see the Completing the Certificate Export Wizard box. Click **"Finish"** to continue.



Step 11. You should now see that the export was successful dialogue box. Click **"OK"** to finish.



Importing the certificate to the Windows Mobile Device

- Step 1. Copy the certificate and the pfximprt utility to your storage card.
- Note: PFXIMPRT Utility can be copied from: \\marshall.edu\munet\Distributions\pfximprt. You only need to copy the pfximprt application file.

- Step 2. On the WM device:
- Click/Tap **Start**
 - Go to the **File Explorer**
 - Browse to the **Storage Card**
 - Open the **pfximport utility**
 - Browse to the **Certificate File** on your storage card.
 - Type in the password of the Certificate file.
 - Click/Tap **open**
 - You should now see:
 - Personal Certs: 1
 - Root Certs: 1
 - Intermed. Certs: 1
 - Total Imported: 3
 - Open your **Comm Manager**
 - Click your **wireless symbol**.
 - You should now be asked for your MUNet Credentials.
 - Unless you want to be prompted for your credentials every time; click **remember me**.
 - You will now be asked for your Username and Domain. Please enter that information and click/tap **OK**.

You should now be connected.

Troubleshooting Tips:

To see if you are connected:

- Click **start**
- Settings**
- Tap the **Connections tab**
- Tap **Wireless Lan**

To see if you have your Certificate installed:

- Click **Start**
- Settings**
- System Tab**
- Certificates**
- Check for Personal **"Marshall University Issuing CA01"**
- Root Tab**
- Check for Root **"Marshall University Root CA"**



Authored by Steve Robinson