

MU Guest Wireless Access

The following steps will help guide you through the process of gaining access to Marshall University's Wireless Guest network.

NOTE: This access is **ONLY** granted to short-term guests of Marshall University – anyone with a valid MUID number will need to use the Wireless Certificate found here:

<https://certificates.marshall.edu/>. This page contains instructions on how to download the wireless certificate.

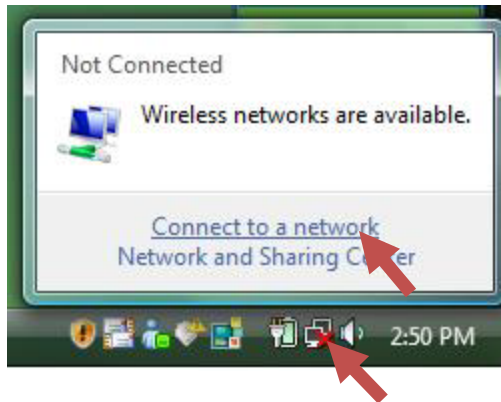
1. Fill out the form located at http://www.marshall.edu/ucs/wireless_help.asp.

NOTE: You **MUST** have a faculty or staff member's email address that is willing to serve as host.

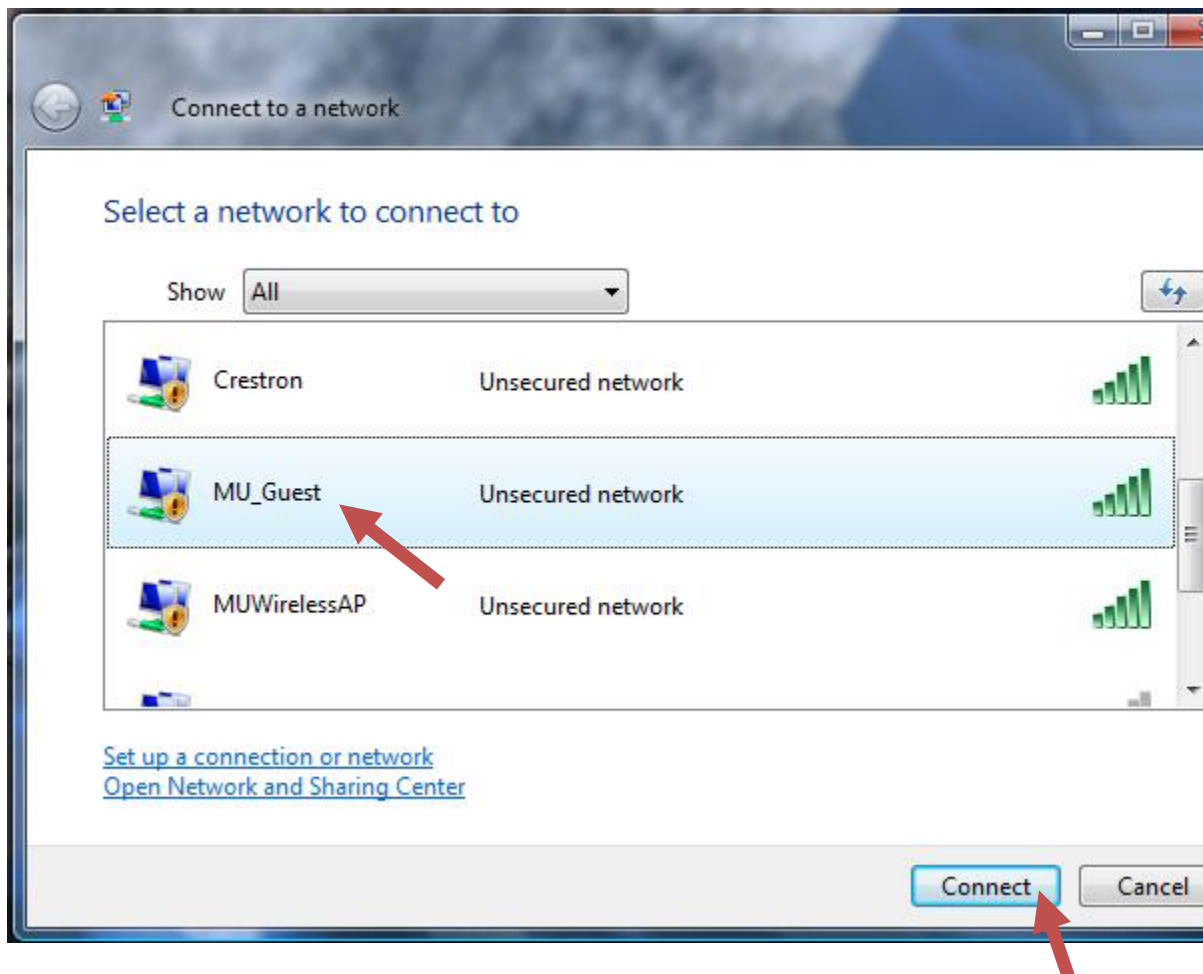
2. An email is sent to the host's email that you entered asking them to vouch for you.
3. After the host vouches for you, you will receive an email confirming this has taken place.

Also, a message will be sent to Marshall's helpdesk containing your information.

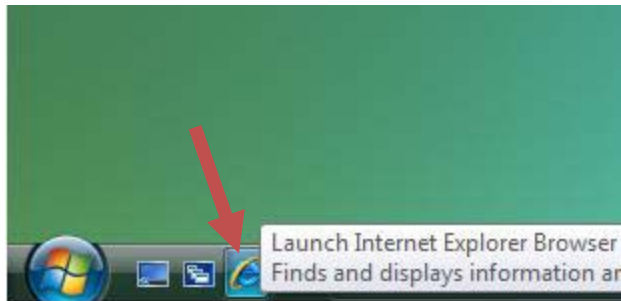
4. A member of the helpdesk will process your information and send you a confirmation email with the necessary information for your granted access.
5. Logging on to the wireless network:
 - a. Click on the computer icon in your task bar. Then click on "Connect to a network" or "View Wireless Networks" (this will depend on whether you are using Windows Vista or Windows XP).



b. Connect to MU_Guest



6. Open a web browser window (ex. Internet Explorer)



7. You will automatically be directed to the Guest Log In page.

Here you enter the user name and password provided in the email that was sent to you by the helpdesk.

Marshall University Guest Wireless Access

User Name

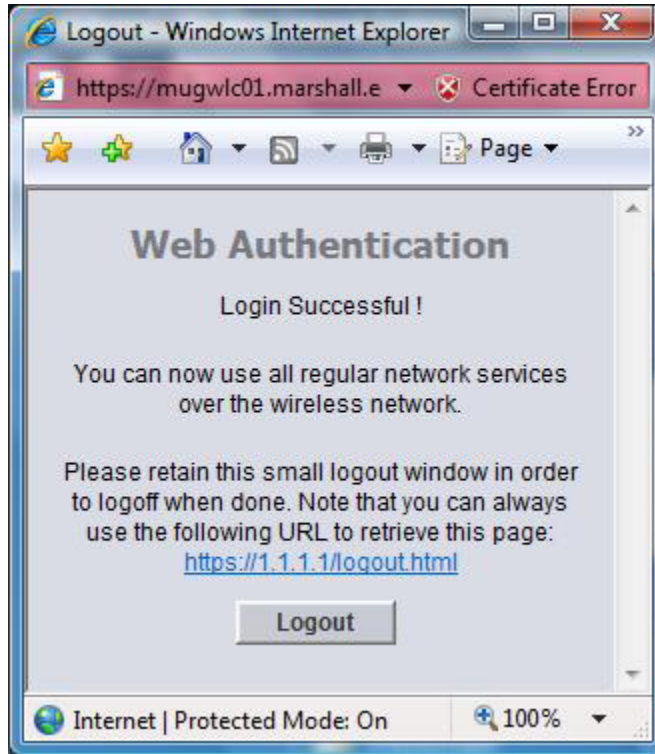
Password

Login

***NOTICE:** Access to the MUNET Guest Wireless network (MU_Guest) provides UNSECURED (unencrypted) wireless network access. This service is provided as a courtesy to allow Internet access to authorized guests of Marshall University. By accessing this system you are signifying that you are an authorized user and that you agree to use this system in accordance with the terms set forth in the Information Technology Environment Use and Abuse Policy. The policy can be found on the Web at <http://www.marshall.edu/ucs/CS/acptuse.asp>. Please note: MUNET account holders (students, faculty/staff, and affiliates) should use the MUNET Secure Network (MUWireless). Computer data passing through this network will be encrypted to ensure confidentiality.*

8. Once you have logged on you will be directed to your normal homepage on your browser.

A window will appear with instructions to leave open until you are ready to log off the network.



You are now connected to the wireless network!