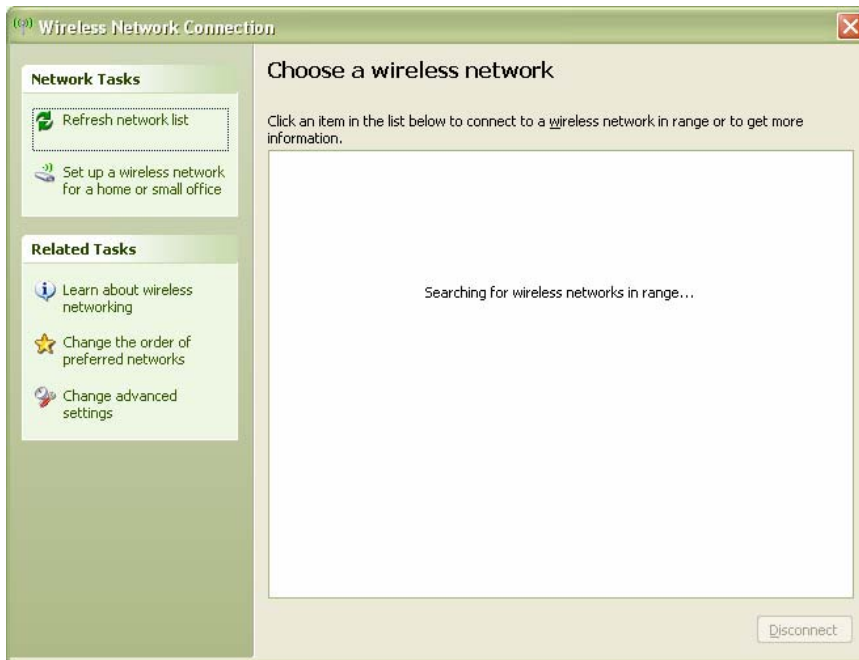


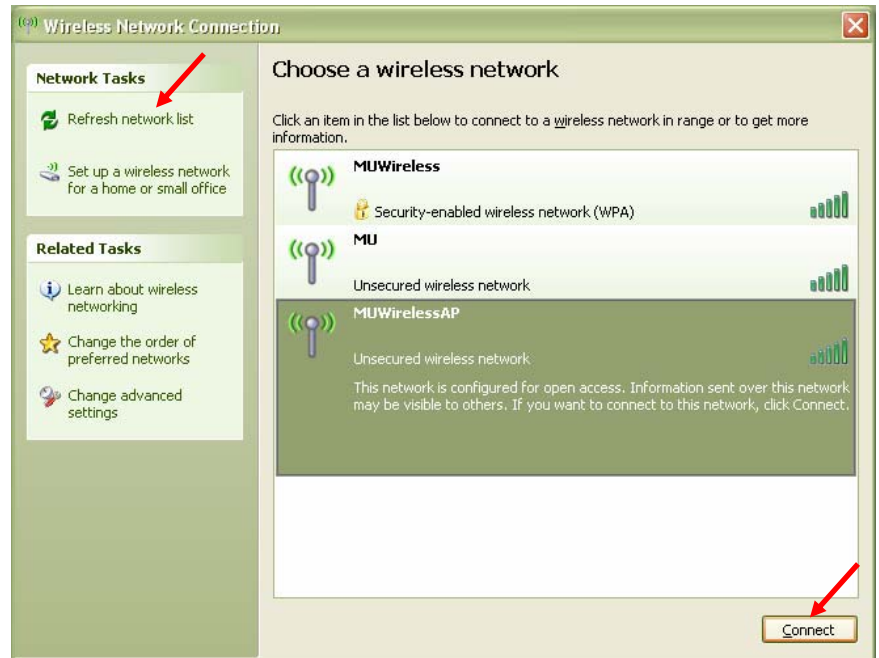
Double click on wireless connection in lower right hand corner of your taskbar.



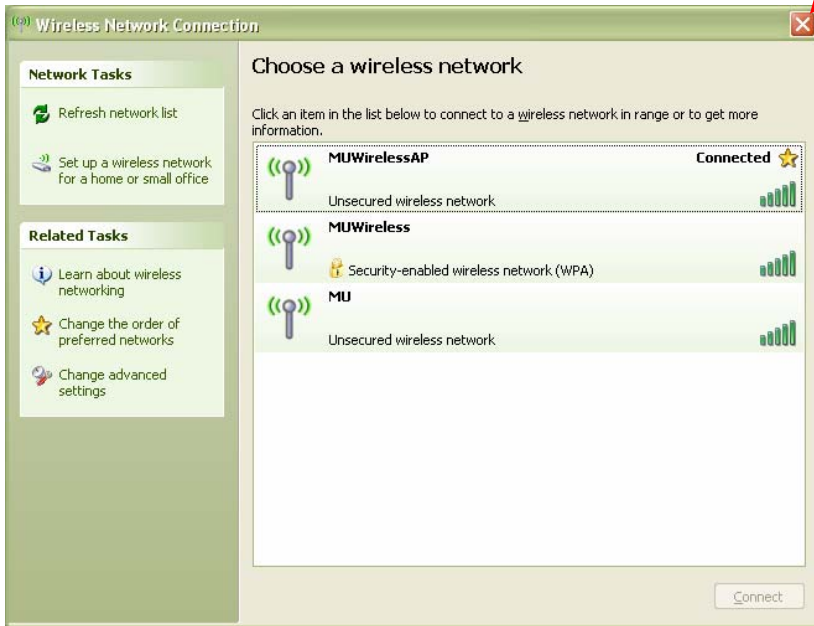
Briefly, you should see a screen saying “Searching for wireless networks in range...”.

***If no wireless networks are found in range, you will be unable to use a wireless connection.**

Click on “Refresh network list” if necessary and then click on MUWirelessAP and click “Connect”.



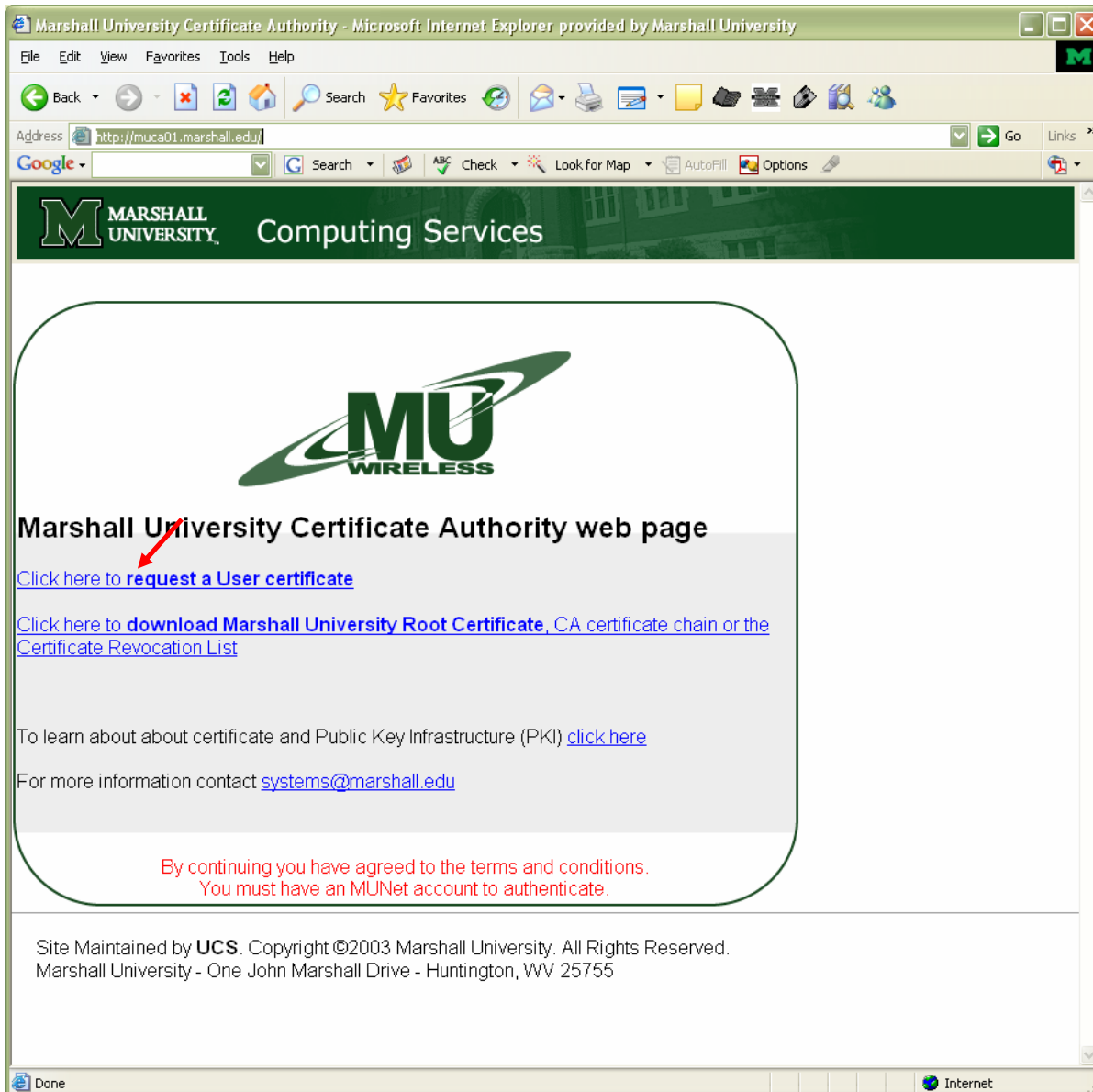
When prompted with a box saying you are connected to an unsecured network “MUWirelessAP”...click “Connect Anyway” to continue.



You should next see a screen saying that you are connected to “MUWirelessAP”.

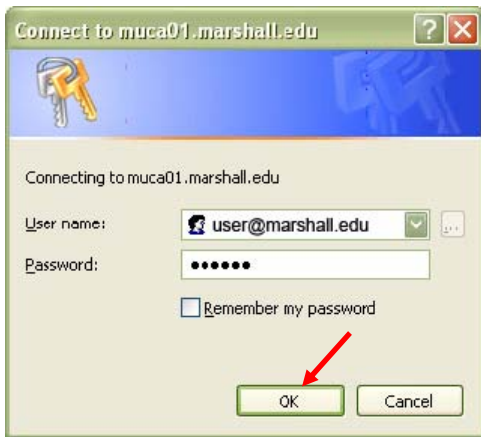
You can now click the X in the upper right hand corner to close this box.

Next open a web browser (Internet Explorer) and go to <http://muca01.marshall.edu/>.



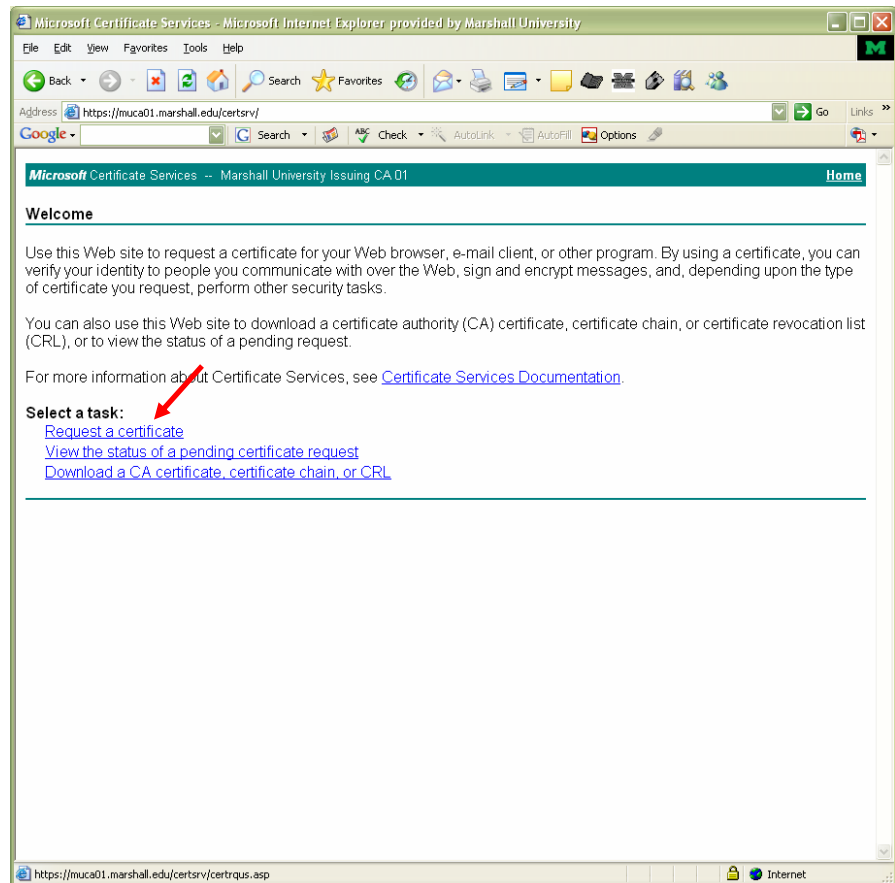
Click on the link that says “Click here to request a User Certificate”.

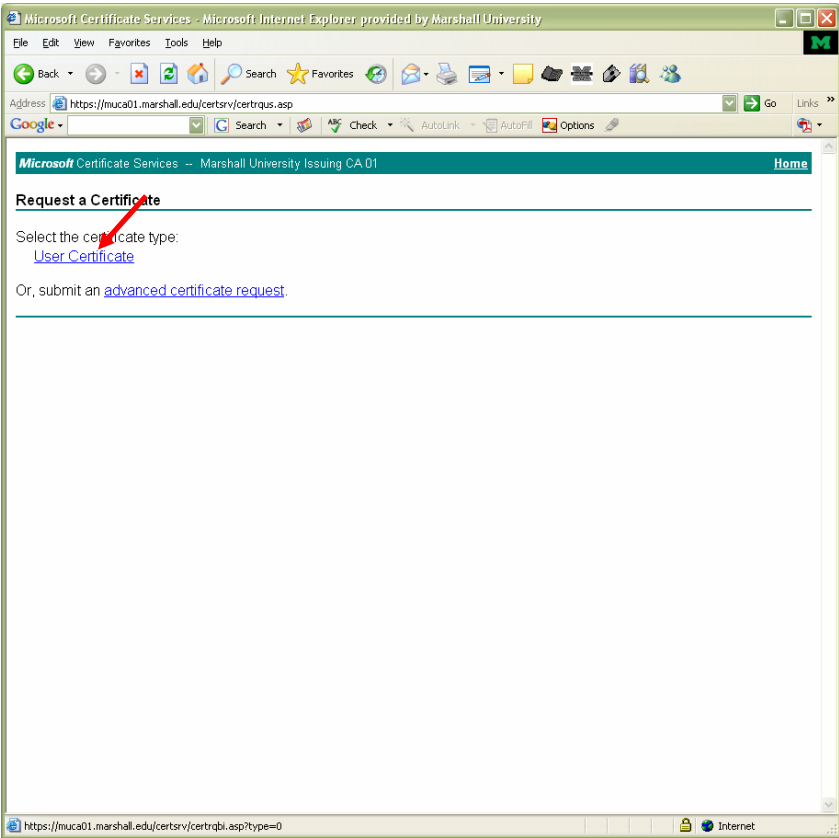
If prompted by a security alert click “Yes” to proceed.



After clicking the link, you should be prompted with a login box. Here, enter your Marshall Email address and password. Click “OK” to continue.

Next you need to click on the “Request a certificate” link.

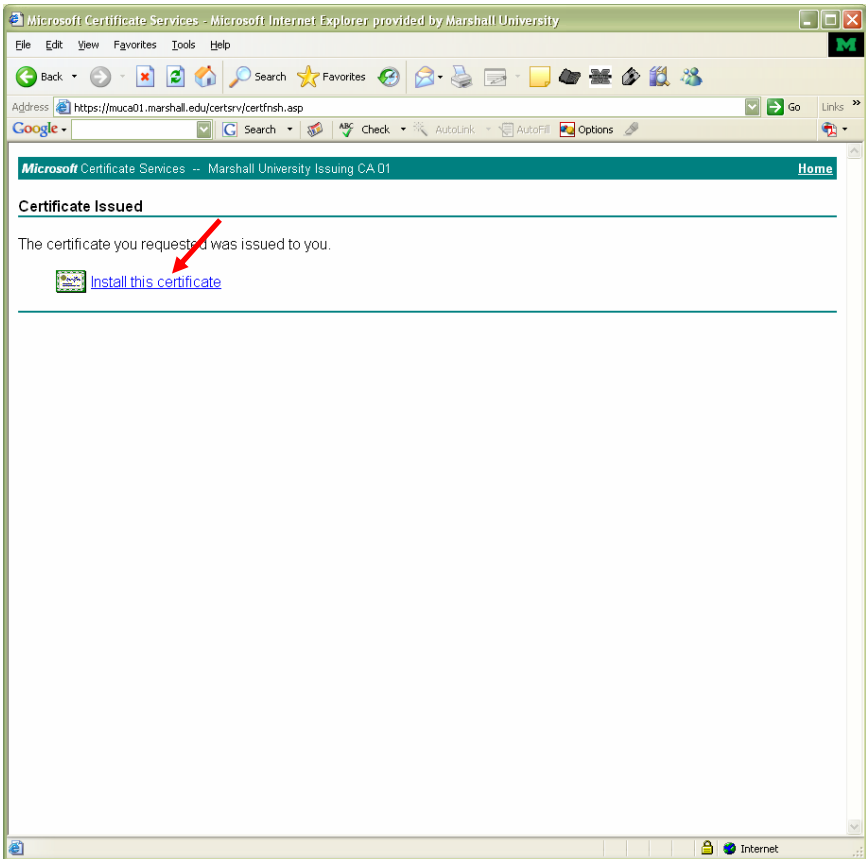
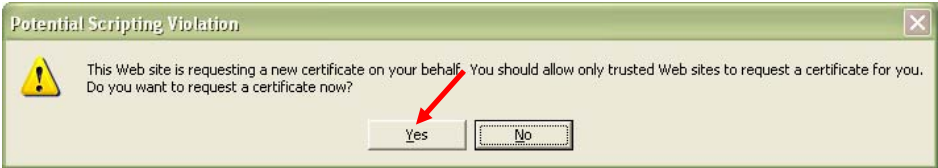




Next click the “User Certificate” link.

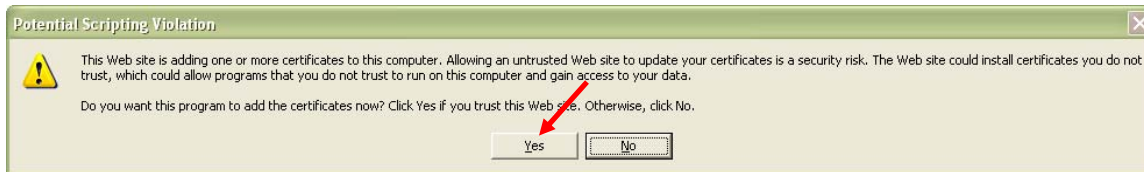
Click the submit button.

When prompted by the “Potential Scripting Violation” message box, click “Yes” to continue.

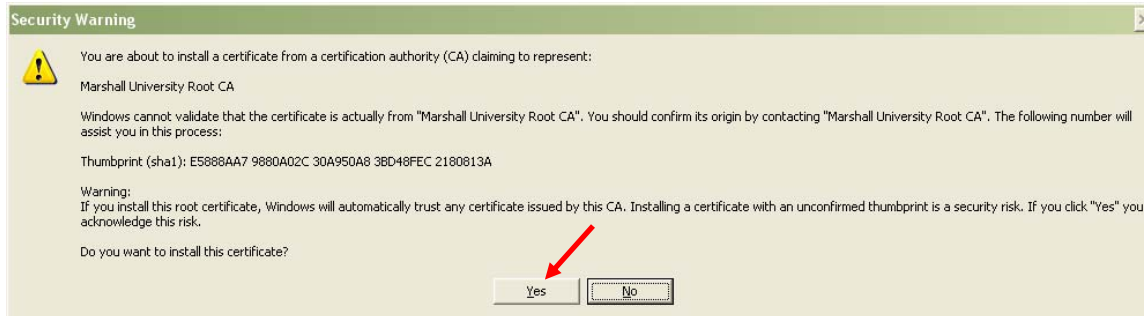


Click the “Install this Certificate” button.

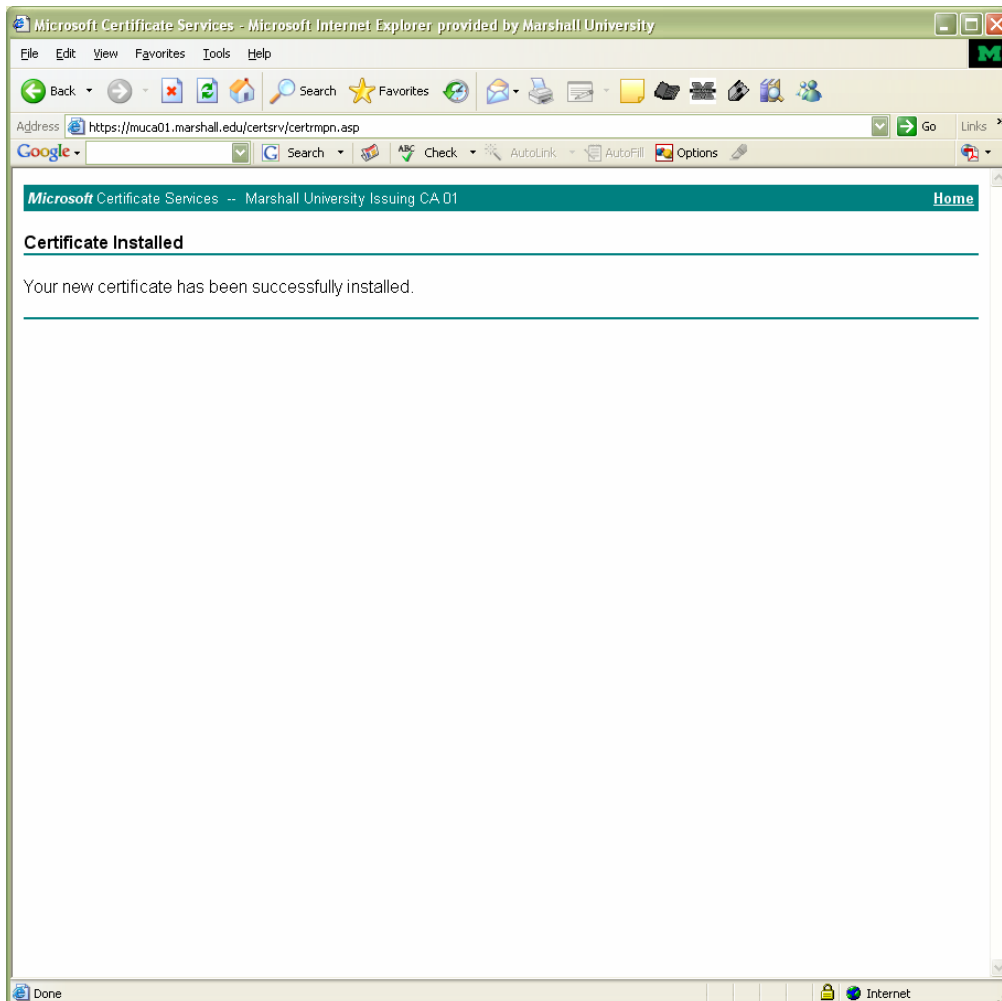
When prompted by a second “Potential Scripting Violation” message box, click “Yes” to continue.



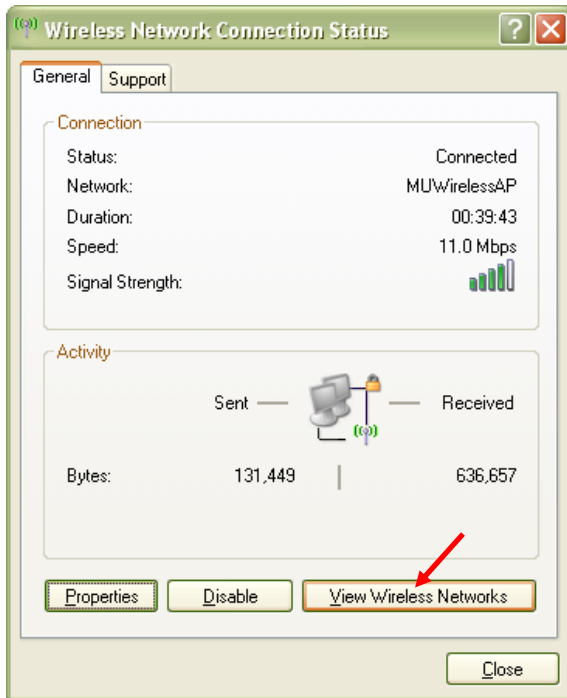
When prompted by a “Security Warning” asking if you would like to install this certificate, click “Yes”.



You should now be brought to a page that displays a message saying that “Your new certificate has been successfully installed.”

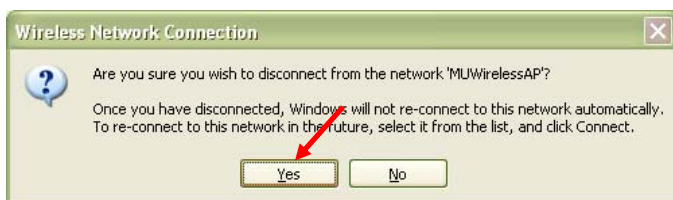
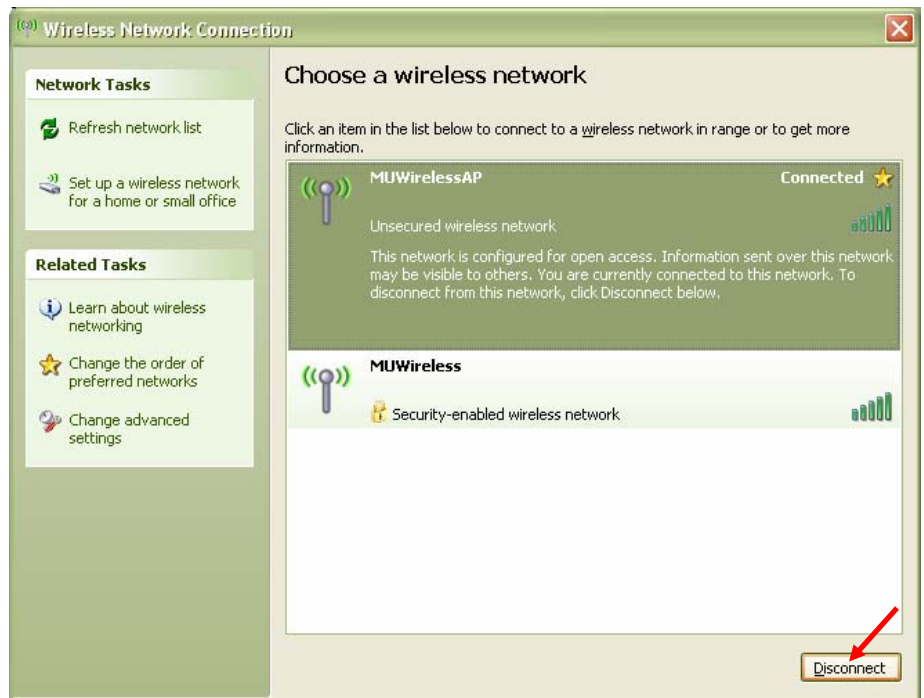


Now, close your web browser (Internet Explorer). Double Click the wireless connection indicator at the lower right hand corner to display your wireless connections.



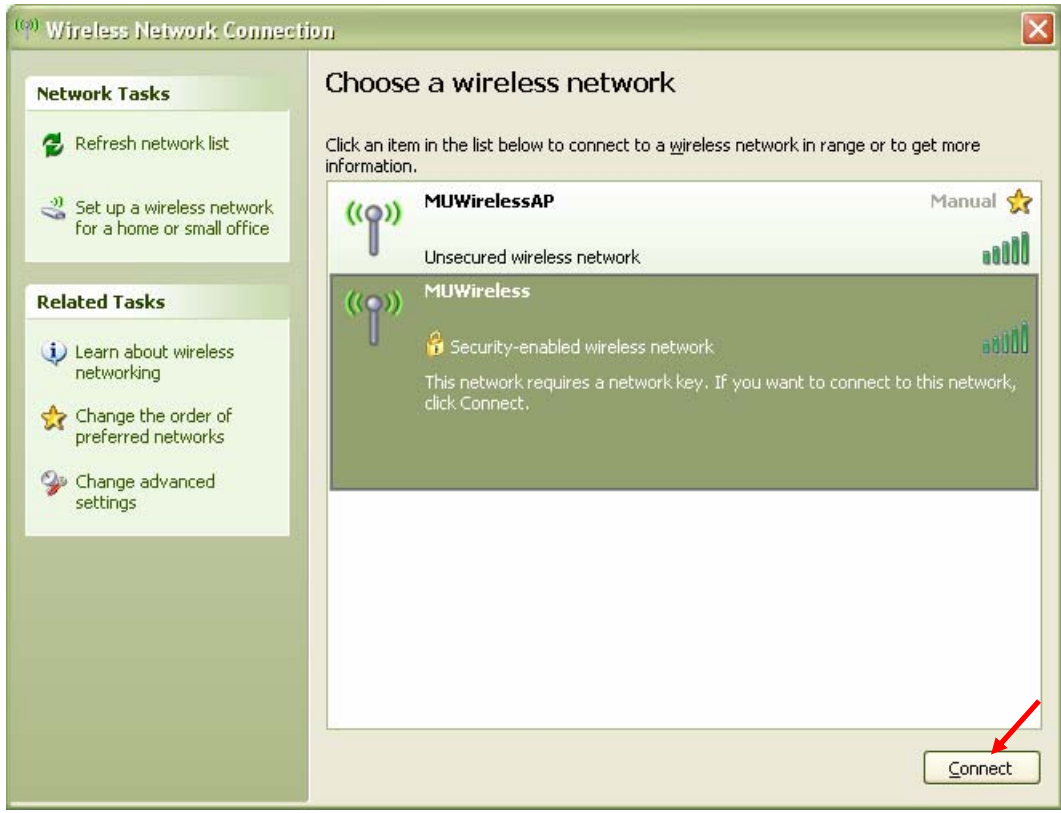
Click on the “View Wireless Networks” button.

Highlight “MUWirelessAP” by clicking on it once, and then click the “Disconnect” button.



Click “Yes” when prompted by a message box asking if you are sure you want to disconnect.

Briefly, you should see a screen saying “Searching for wireless networks in range...”



Highlight “MUWireless” by clicking on it once and then click the “Connect” button in the lower right hand corner.



You will now see a screen that shows you are trying to connect to MUWireless

You should then be returned to a screen showing you are connected to MUWireless. You may now close the dialog box.

You are now connected to the Marshall University Wireless network.