

Figure 1: Relationship Between Mean ACT Scores and Mean Total CLA Scores for Freshmen

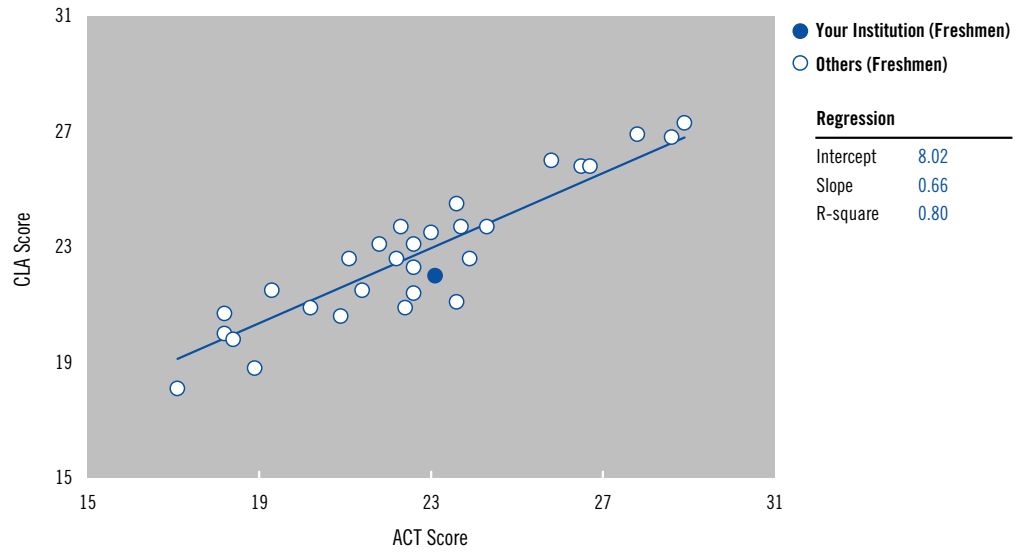


Figure 2: Relationship Between Mean ACT Scores and Mean Total CLA Scores for Seniors

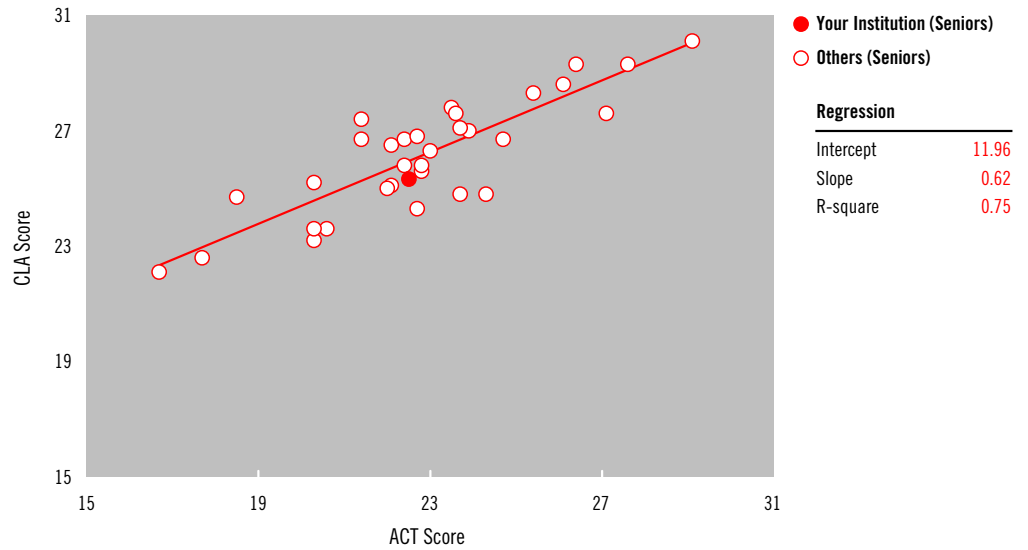


Figure 3: Relationship Between Mean ACT Scores and Mean Total CLA Scores for Freshmen and Seniors

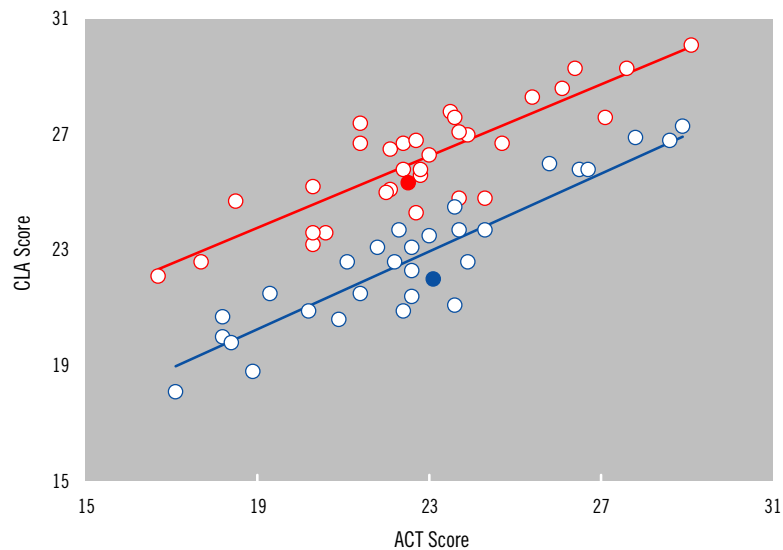


Table 3: Number of Freshmen and Seniors with Scores on Each Measure at Your School who Also Had an ACT Score

Measure	Number of Freshmen	Number of Seniors
Performance Task	85	31
Analytic Writing Tasks	80	33
Make-an-Argument	80	33
Critique-an-Argument	84	34
Total score	85	64
ACT score	23.1	22.5

Table 4: Deviation Scores and Relative-to-Expected Results at Your School for Freshmen and Seniors

Measure	Freshmen		Seniors	
	Deviation Score	Relative to Expected	Deviation Score	Relative to Expected
Performance Task	-1.32	Below	-0.34	At
Analytic Writing Tasks	-0.94	At	-0.61	At
Make-an-Argument	-0.99	At	-0.81	At
Critique-an-Argument	-0.89	At	-0.34	At
Total score	-1.18	Below	-0.55	At

Note: Deviation (residual) scores are reported in terms of the number of standard error units the school's actual mean deviates from its expected value.

Table 5: Difference Scores and Relative-to-Average Results (Comparison of Freshmen and Senior Deviation Scores)

Measure	Difference Score	Relative to Average
Performance Task	0.98	Above
Analytic Writing Tasks	0.33	At
Make-an-Argument	0.18	At
Critique-an-Argument	0.55	At
Total score	0.63	Above

Note: Difference Score = Senior Deviation Score – Freshmen Deviation Score

Table 6: Mean Scores for Freshmen and Seniors in the CLA Sample and at Your School that Met the Dual Requirement of Having at Least 25 Students with Both CLA and ACT Scores

Measure	Freshmen		Seniors	
	All Schools	Your School	All Schools	Your School
Performance Task	22.5	21.8	24.8	23.9
Analytic Writing Tasks	22.9	22.2	27.3	26.8
Make-an-Argument	22.6	21.7	26.9	26.1
Critique-an-Argument	22.6	22.1	27.3	27.1
Total score	22.8	22.0	26.1	25.4
ACT score	22.7	23.1	22.7	22.5

Table 7: Comparison of Observed and Expected Outcomes at Your School

Outcome	Your School	Expected Value	Deviation Score	Relative to Expected
First-year retention rate	72.0	73.6	-0.20	At
4-year graduation rate	13.1	17.3	-0.40	At
6-year graduation rate	37.6	42.9	-0.60	At
Freshmen CLA total score	22.0	23.2	-1.18	Below
Senior CLA total score	25.4	25.9	-0.55	At

Note: For a few schools, the equation resulted in a predicted 4-year graduation rate slightly less than zero. For these schools, the predicted rates are reported as zero.

Table 8: Summary Statistics for All Fall 2004 Freshmen Tested at Your School

Measure	Number of Students	Mean Scale Score	Standard Deviation	25th Percentile	75th Percentile
Performance Task	85	21.8	4.2	19.0	25.0
Analytic Writing Tasks	80	22.2	3.9	19.0	26.0
Make-an-Argument	80	21.7	4.5	17.0	26.0
Critique-an-Argument	84	22.1	4.6	17.0	25.0
ACT score	85	23.0	3.6	20.0	25.0

Table 9: Summary Statistics for All Fall 2004 Freshmen in the CLA

Measure	Number of Students	Mean Scale Score	Standard Deviation	25th Percentile	75th Percentile
Performance Task	3,414	22.3	4.8	19.0	26.0
Analytic Writing Tasks	3,261	22.7	4.2	19.0	26.0
Make-an-Argument	3,334	22.5	4.7	20.0	26.0
Critique-an-Argument	3,332	22.4	4.8	17.0	25.0
ACT score	3,029	22.6	4.6	19.0	26.0

Table 10: Summary Statistics for Schools that Tested Fall 2004 Freshmen

Measure	Number of Schools	Mean Scale Score	Standard Deviation	25th Percentile	75th Percentile
Performance Task	39	22.2	2.5	20.6	23.9
Analytic Writing Tasks	39	22.6	2.4	21.0	24.2
Make-an-Argument	39	22.3	2.5	20.8	24.1
Critique-an-Argument	39	22.3	2.4	21.0	23.7
Total score	39	22.3	2.5	20.7	23.8
ACT score	37	22.1	3.1	19.3	23.5

Table 11: Summary Statistics for All Spring 2005 Seniors Tested at Your School

Measure	Number of Students	Mean Scale Score	Standard Deviation	25th Percentile	75th Percentile
Performance Task	35	23.7	4.8	21.0	26.0
Analytic Writing Tasks	34	26.8	4.7	24.0	26.0
Make-an-Argument	34	26.1	5.2	23.0	30.0
Critique-an-Argument	35	27.1	4.9	25.0	32.0
ACT score	66	22.5	4.4	20.0	25.0

Table 12: Summary Statistics for All Spring 2005 Seniors in the CLA

Measure	Number of Students	Mean Scale Score	Standard Deviation	25th Percentile	75th Percentile
Performance Task	1,616	24.8	5.0	21.0	28.0
Analytic Writing Tasks	1,604	27.1	4.0	24.0	29.0
Make-an-Argument	1,611	26.7	4.5	23.0	30.0
Critique-an-Argument	1,616	27.0	4.7	25.0	28.0
ACT score	2,462	23.0	4.7	20.0	26.0

Table 13: Summary Statistics for Schools that Tested Spring 2005 Seniors

Measure	Number of Schools	Mean Scale Score	Standard Deviation	25th Percentile	75th Percentile
Performance Task	34	24.7	1.9	23.7	25.7
Analytic Writing Tasks	32	27.0	2.0	26.0	28.3
Make-an-Argument	32	26.6	1.9	25.7	27.9
Critique-an-Argument	32	27.0	2.2	25.9	28.4
Total score	42	25.4	2.0	24.1	26.9
ACT score	32	22.8	2.7	21.4	24.1