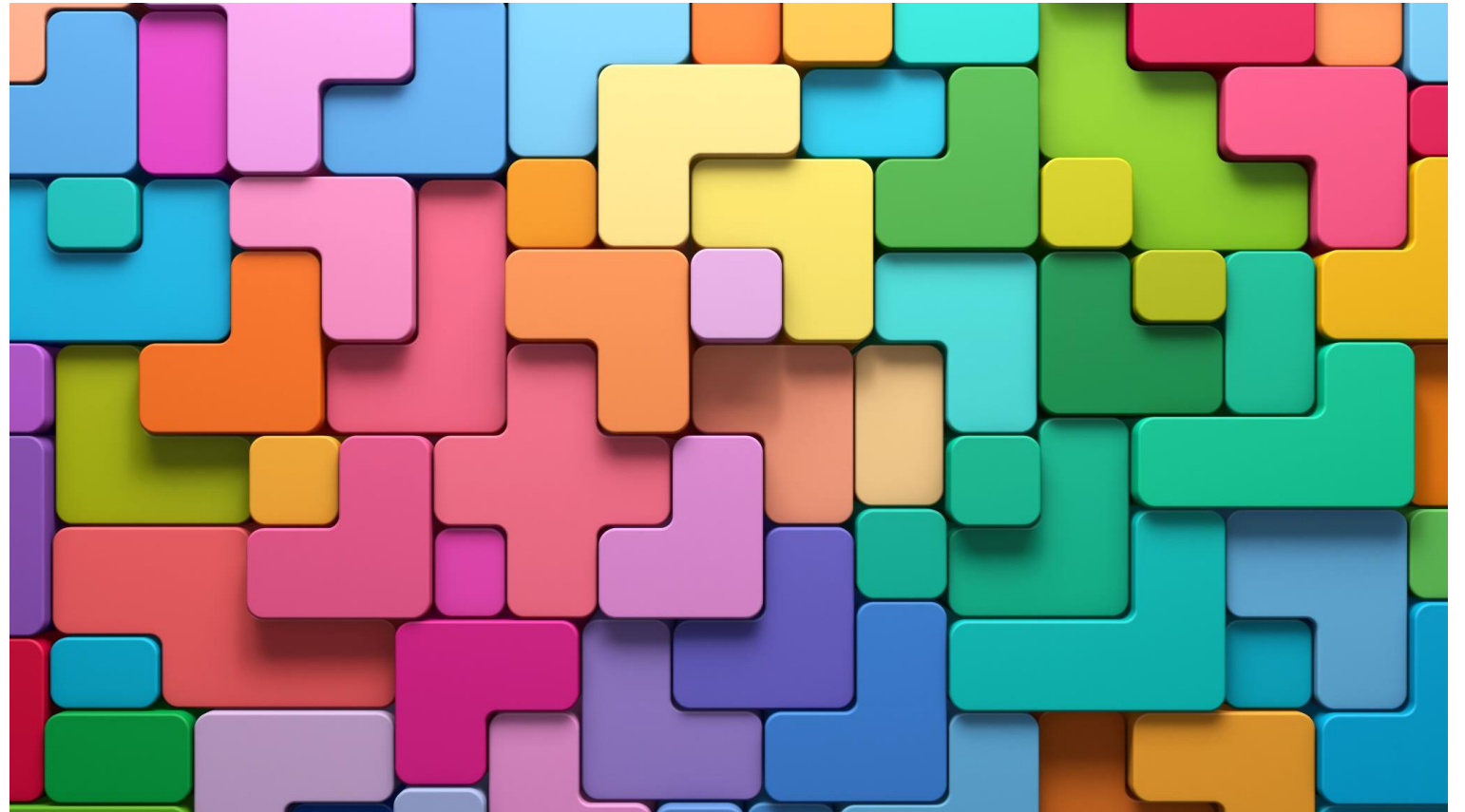
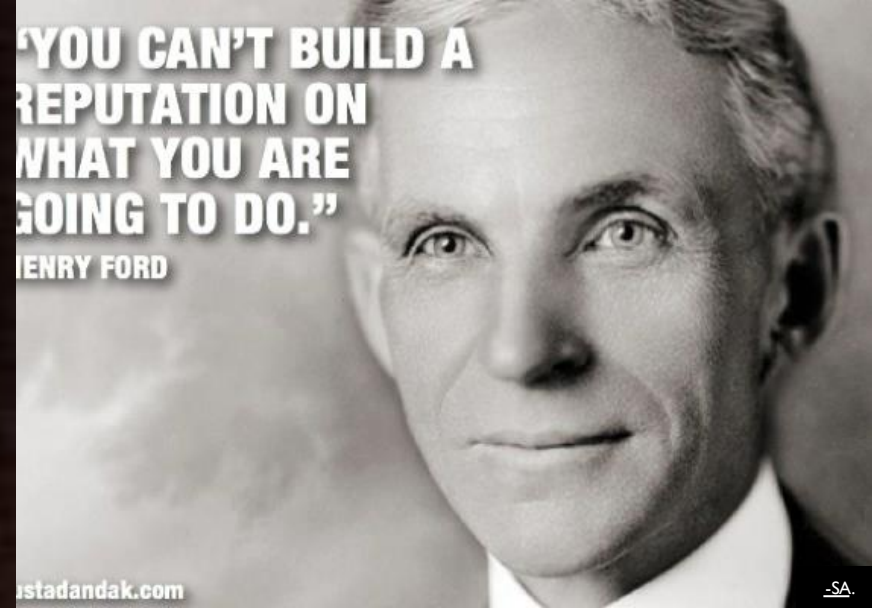


SERVING THE  
SOCIAL,  
EMOTIONAL  
NEEDS OF  
SCHOOL  
CHILDREN AS  
A SCHOOL  
SOCIAL  
WORKER

FITTING THE PIECES  
TOGETHER





" COMING TOGETHER IS A BEGINNING:  
KEEPING TOGETHER IS A PROGRESS:  
WORKING TOGETHER IS SUCCESS."  
HENRY FORD



**COMING  
TOGETHER IS A  
BEGINNING**

# SCHOOL STAFF

## **Administrative and**

## **Academic Staff**

- Principal
- Assistant Principal
- Teacher
- Special Educator
- Reading Specialist
- Intervention Specialist

## **Support staff**

- Counselor
- School Nurse
- Psychologist
- School Social Worker

# HOW IS A SCHOOL SOCIAL WORKER DEFINED IN WEST VIRGINIA

- West Virginia Code states in Chapter 18-1-1  
18-1-1 (i) "Social worker" means a nonteaching school employee who, at a minimum, possesses an undergraduate degree in social work from an accredited institution of higher learning and who provides various professional social work services, activities or methods as defined by the state board for the benefit of students;



WEST  
VIRGINIA  
DEPARTMENT  
OF  
EDUCATION

- **"West Virginia school social workers are licensed professional who serve between school and community to promote and support students' academic and social success."**

*Collaborating for Student Success;  
Understanding the Roles of Student  
Support Personnel*





# WEST VIRGINIA BOARD OF SOCIAL WORK

- West Virginia Board of Social Work does not license school social workers in the state of West Virginia. Social work license types within WV are
  - Regular License
  - Provisional license
  - Temporary Permit
  - Emeritus Status License
  - Inactive Status License

**NATIONAL  
ASSOCIATION OF  
SOCIAL WORKERS  
SCHOOL SOCIAL WORK  
SPECIALIST**

NASW credentialed School Social Worker must have a MSW from an accredited university, documentation of at least two years of paid, supervised, post MSW social work experience as a social worker in a school setting, current MSW-level state social worker license, or a current exam-based school social work license, registration or certification issued by the designated state office and adherence to the NASW code of ethics and NASW Standards for Continuing Professional Education.





# KEEPING TOGETHER IS A PROGRESS

Keeping together is more like a process.

We must first understand each other's role in the school.

"The best teachers know that they need to employ numerous strategies to reach their students. The best school social workers are much the same — they draw on a wide range of skills and knowledge to serve students in a myriad of ways.

Frustratingly, though, school social workers often find themselves to be underutilized, relegated to a narrow set of tasks. It's a common lament from the professionals we've trained over the years. As we heard recently from a former student who graduated several years ago and now works in an urban school: "I could help these kids and families in so many ways, but all my supervisors want me to do is perform mental health assessments and attend IEP meetings. I know those things are important, but the people I work with seem to have no idea how much more I could do to support students."

*School social workers as partners in school mission*

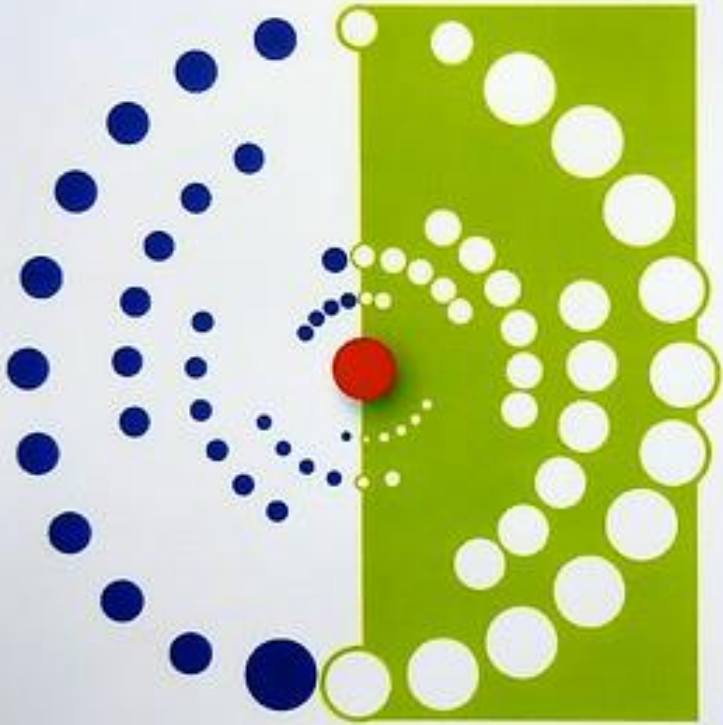
Nadine Finigan-Carr and Wendy E. Shaia



# ROLE OF A SCHOOL SOCIAL WORKER

- WVDE
  - Services to students
  - Services to school personnel
  - Services to districts
  - Services to parent/families





# SOCIAL WORKERS CHANGE **FUTURES**

## DETERMINING THE NEEDS AND RESPONDING AS A SCHOOL SOCIAL WORKER

- Every school will determine how to use their school social worker according to their own specific needs
- School Social Workers are hired as other professionals not always as specifically a SSW.
- Important to introduce yourself at the onset of your hiring as to your role in that school.

# **BARRIERS AND CHALLENGES TO BEING A SCHOOL SOCIAL WORKER**

- Is my job secure? Grant funded or county supported?
- Job responsibilities vs. Job description
- Who is my immediate supervisor, and what do they know about school social work
- Will you be assigned to 1, 2, or more schools?
- Lack of support from colleagues in school social work positions in your county
- Turf issues, differentiate between school counselors and school psychologists
- Additional comments

# EDUCATE YOUR SCHOOL ON YOUR SKILLS AND RESPONSIBILITIES

## Professional skills

- Provide staff training in areas of your expertise
- Find the gaps and fill them
- Continually keep yourself abreast of new practice skills in school social work.
- Consider an MSW intern as a resource for expanding your own skills.

## Responsibilities

- Have a clear understanding of what is expected of you.
- Review your job description at least annually and suggest revisions as your job changes through the years.
- Consider working outside your responsibilities, supporting teachers and their specific needs that help students.

# WHAT DO CURRENT SCHOOL SOCIAL WORKERS WISH THEY HAD KNOWN THEIR FIRST YEAR IN THE SCHOOL SYSTEM?

Crisis Intervention

SEL Social Emotional Learning

Community Collaboration

Ethics as it relates to schools

SAT and IEP

Job description

Managing workload

Educational plan and High School Credit requirements

Developing a relationship with the principal at their school(s)

# INTRODUCING WEST VIRGINIA SCHOOL SOCIAL WORKERS PROFESSIONAL LEARNING COMMUNITY

To become a member, you must:

1. Have a degree in Social Work
2. Enter WV schools as a part of your job responsibilities

## **Benefits of Joining:**

- **Feel more COMPETENT with improved skills and knowledge through**
  - Collaborative study
  - Professional development trainings
  - Professional dialogue specific to education settings

**Connect to other social workers with similar daily experienced**

**Feel EMPOWERED to be an agent for positive change in your community**

**Join through Facebook West Virginia School Social Workers**

**<https://www.facebook.com/groups/wvssw>**

SO JUST  
WHO ARE  
WE????

We are

- Mediators
- Bridge builders
- Listeners
- Flexible in our approach to problems
- Knowledgeable of mental health and appropriate treatment
- Sounding boards
- Aware of the uniqueness of all situations
- Great resource finders for students, parents, schools and communities

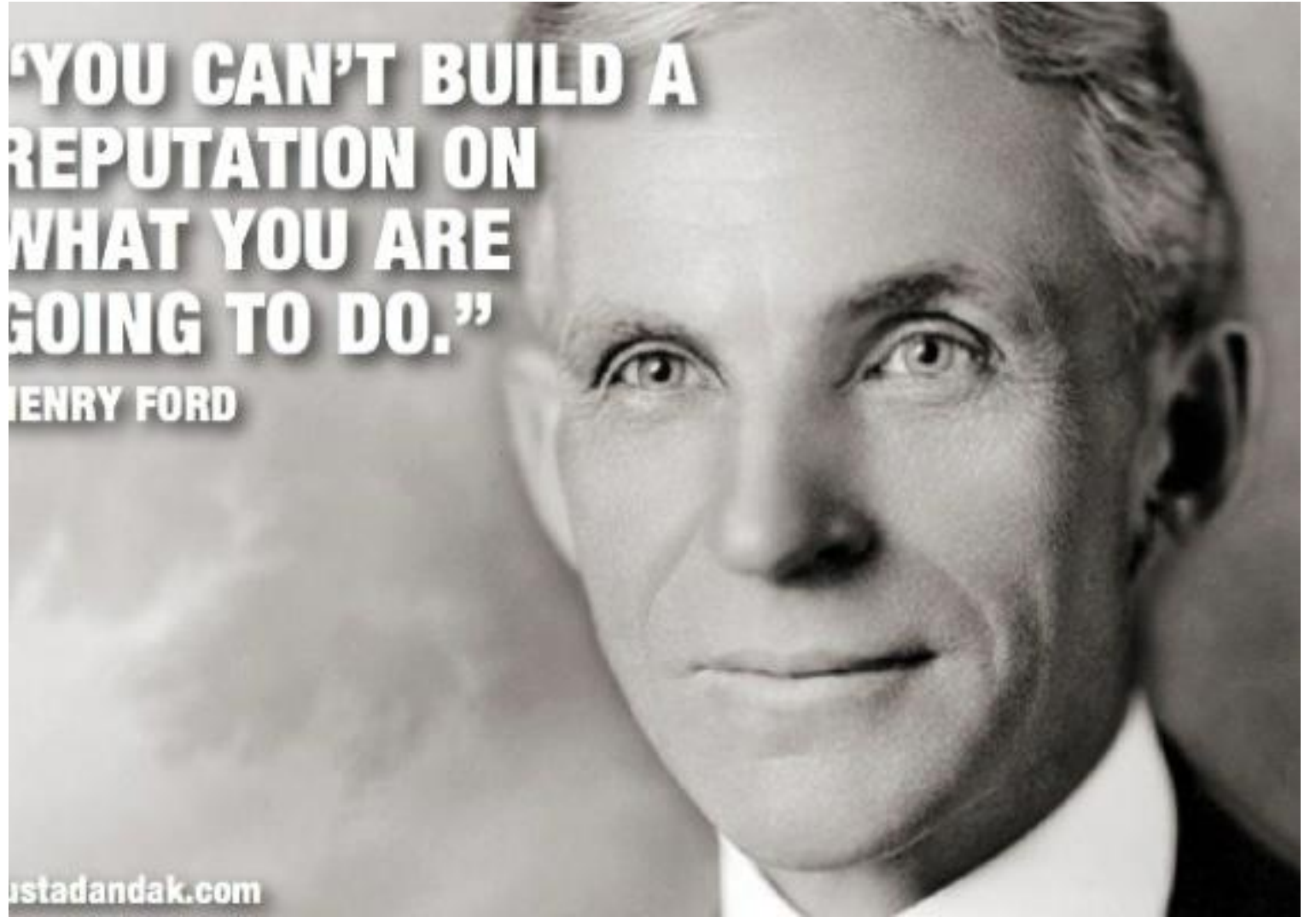


WHAT ARE  
YOU  
GOING TO  
DO?

**“YOU CAN’T BUILD A  
REPUTATION ON  
WHAT YOU ARE  
GOING TO DO.”**

**HENRY FORD**

[ustadandak.com](http://ustadandak.com)



# Mental Health Support

1.

## **Universal Mental Health Supports**

“School mental health promotion for all”...refers to all activities to foster positive social, emotional and behavioral skills and well-being **of all students** (NCSMH, 2020).

2.

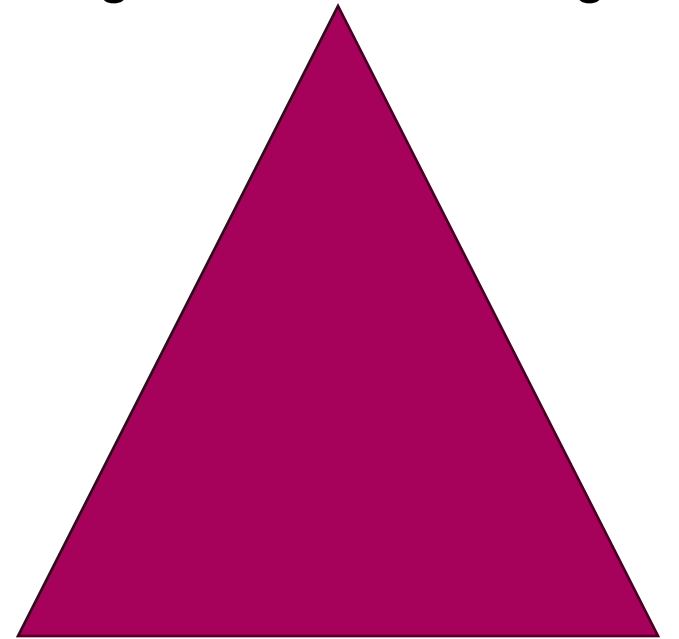
## **Targeted Mental Health Supports**

Targeted services and supports include early intervention or secondary prevention services. Strategies are designed to address mental health concerns for students who have been identified as experiencing mild distress or being at-risk for a given condition (National Center School Mental Health, 2020).

3.

## **Intensive Mental Health Supports**

These interventions are designed to address mental health concerns for students who have not been successful with targeted interventions. Some students may be referred to a school-based or an outside MH professional.



WEST VIRGINIA  
TRAUMA  
INFORMED  
MINDFULNESS  
ENGAGEMENT  
FOR KIDS



T4K is designed to provide evidence informed, trauma-based services for elementary children and families affected by trauma and substance misuse.

**WHAT PERSPECTIVE DOES  
THE SOCIAL WORKER  
BRING TO A BEHAVIORAL  
HEALTH TEAM?**

**Behavior is the language of trauma. Children will show you before they tell you that they are in distress.**

M. Keels U. of  
Chicago



It's not what happens to us,  
but our response to what  
happens to us that hurts  
us.” – Stephen Covey.

# Marshall University Graduate Program School Social Work Certificate

## Collaboration between the Dept of Social Work MSW program and the College of Education

This relationship is crucial as SW have traditionally been unprepared to navigate the culture of the school system

Will enable graduate students to address the knowledge areas required by the NASW for the national certificate for SSW : the Certified School Social Work Specialist (C-SSWS)

Prior to sitting for the exam, must have two years of PAID school SW experience.



- **Coursework Included:**

- **21 total hours**

- 6 hours of education courses:

- The School and Community Relations
- Introduction to Exceptional Children

- 6 hours of newly developed school SW courses :

- School SW
- Prevention/Intervention in School SW

- 9 hours crucial to school SW :

- Family and Community Violence
- Practice with Children
- Suicidology

- 9 hours are included within the graduate degree plan of study and are not additional required coursework







## • **HOW DOES ONE APPLY?**

Prospective certificate-only students should apply for admission to Marshall University (with the non-refundable application fee), as a Certificate/Professional Development student.

Students already enrolled in the degree program which sponsors the certificate they wish to pursue should submit a Secondary Program Request form. There is no application fee.

Students enrolled in a degree program who wish to apply to a certificate program sponsored by another degree program should apply for admission to Marshall University (with the nonrefundable application fee), as a Certificate/Professional Development student.

Students who wish to concurrently pursue a degree and certificate sponsored by the same degree program should complete the application for admission to the degree program (with the non-refundable application fee) and a Secondary Program Request form.

THANKS  
FOR  
ATTENDING

Contact information

Frances Pack MSW

[packf@marshall.edu](mailto:packf@marshall.edu)

Robin Looney MA

[looney5@marshall.edu](mailto:looney5@marshall.edu)

Marshall University

Graduate SW Dept.

Get involved!

It takes a team  
to make a dream  
a reality.

