



1

---

---

---

---

---

---

---



2

---

---

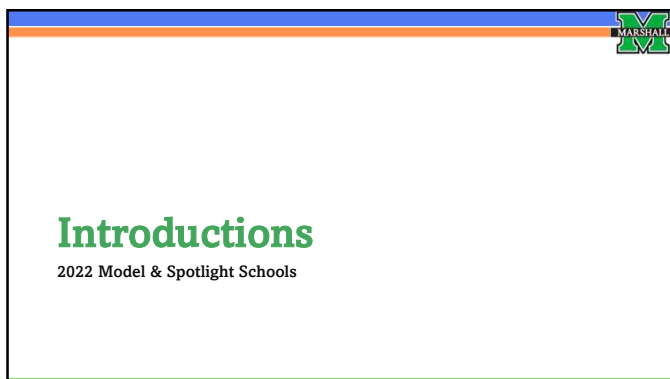
---

---

---

---

---



3

---

---

---

---

---

---

---



**Huntington East  
Middle School**

Cabell County

4

---

---

---

---

---

---

---



**Wheeling Park  
High School**

Ohio County

5

---

---

---

---

---

---

---



**Meet the Schools**

Sharing Their Stories

6

---

---

---

---

---

---

---



7

---

---

---

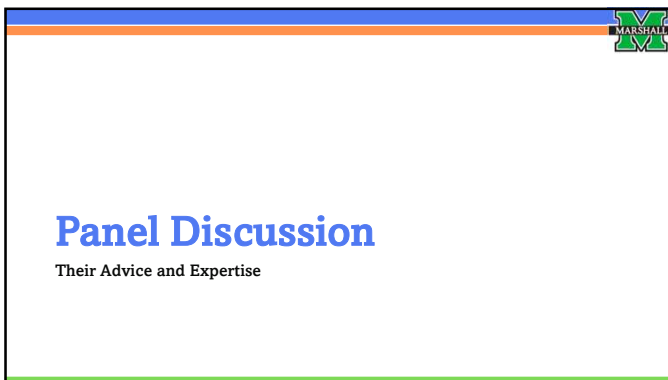
---

---

---

---

---



8

---

---

---

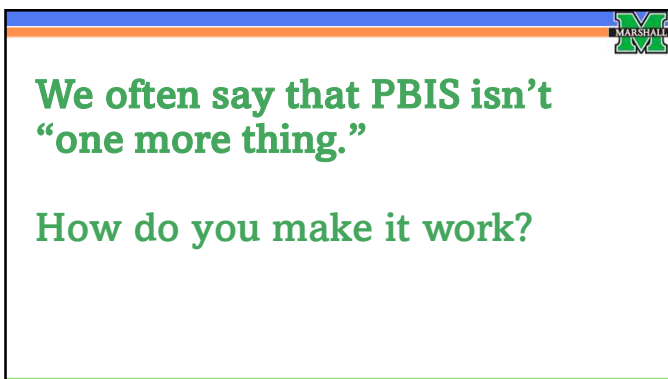
---

---

---

---

---



9

---

---

---


---

---

---

---

---



## Staff Buy-In

We won't lie, it's hard. What are your secrets?

10

---

---

---


---

---

---

---

---



## Data

How do you collect it?  
When do you look at it?  
What do you do with it?

11

---

---

---


---

---

---

---

---



## Tell us about your outcomes.

Team?  
Staff?  
Students?  
Families?

12

---

---

---

---

---

---

---

---

## Questions from you?

13

## Words of encouragement to our schools?

14

## Interested in more?

## Connecting with a School

## ANNOUNCING...

### PBIS Model Schools

The WV PBIS Team is proud to announce that the following schools have been designated as 2024-2025 Tier 1 Model Schools!

- Buffalo Elementary School
- Central Elementary School
- Huntington East Middle School
- Kingswood Elementary School
- Madison Middle School
- Moundsville Middle School
- Oak Hill High School
- Paden City Elementary School
- Sherrard Middle School
- Steenrod Elementary School
- Suncrest Elementary School
- Wheeling Park High School
- Zela Elementary School

16

---

---

---

---

---

---

---

---

---

---

## 2025 WV PBIS Model Schools

1. Buffalo Elementary	5. Hickover Middle	9. Sherrard Middle
2. Central Elementary	6. Huntington East Middle	10. Steenrod Elementary
3. Huntington East Middle	7. Oak Hill High	11. Suncrest Elementary
4. Kingswood Elementary	8. Paden City Elementary	12. Wheeling Park High
		13. Zela Elementary

17

---

---

---

---

---

---

---

---

---

---

## Request for Assistance

To schedule a visit to a 2025 Model School, scan the QR code and complete the "Request for Assistance."

18

---

---

---

---

---

---

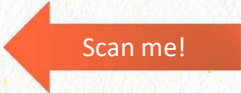

---

---



---

---

### Evaluations



Erin Aguilar, MA  
Behavior Support Specialist  
[erin.aguilar@marshall.edu](mailto:erin.aguilar@marshall.edu)



---

---

---

---

---

---

---