

# Marshall University Workflow

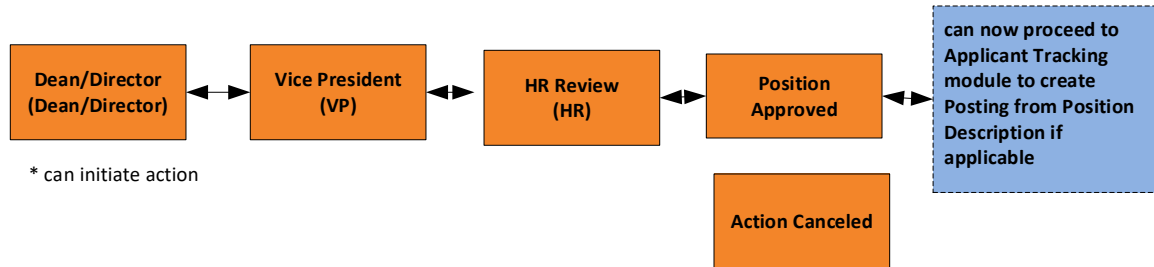
October 6, 2021

## User Groups

Initiator: Personal Scope

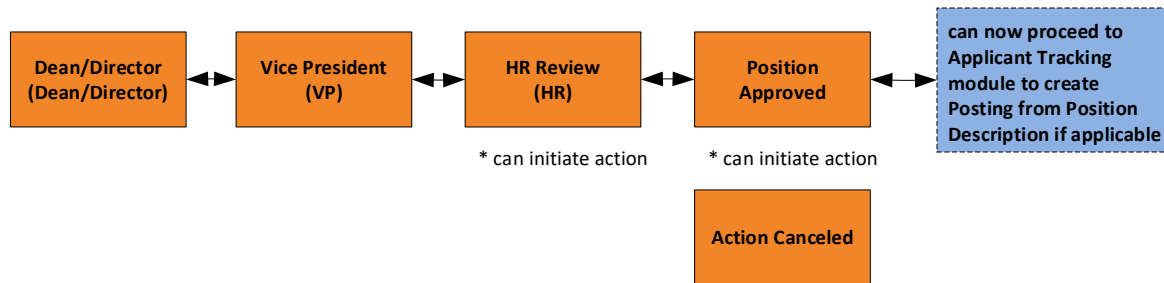
Non-Classified/Classified Exempt  
 Classified/Non-Exempt  
 Faculty  
 MURC  
 Marshall Health

### Non-Classified/Classified Exempt, Classified/Non-Exempt, Faculty: New Position



\* action can be canceled at any point along the process

### Non-Classified/Classified Exempt, Classified/Non-Exempt, Faculty: Modify Position



\* action can be canceled at any point along the process

#### Workflow Legend

System State

( ) State Owner - user group who can move from that state to another state

\* Note

-- Email

#### PD ACTION NOTES:

\*  
\*  
\*

# Marshall University Workflow

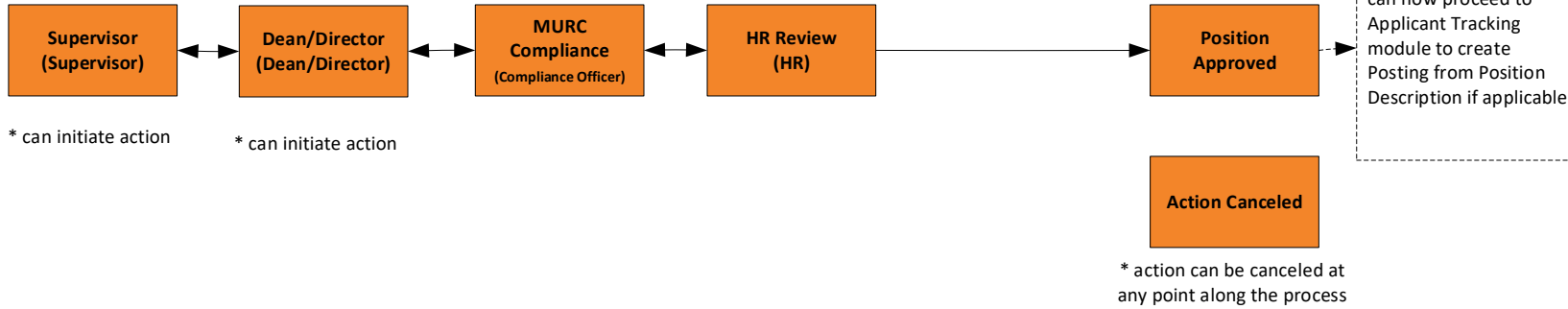
October 6, 2021

## User Groups

Initiator: Personal Scope

Non-Classified/Classified Exempt  
Classified/Non-Exempt  
Faculty  
MURC  
Marshall Health

### MURC: New Position, Modify Position



#### Workflow Legend

System State

( ) State Owner - user group who can move from that state to another state

\* Note

-- Emal

#### PD ACTION NOTES:

\*  
\*  
\*

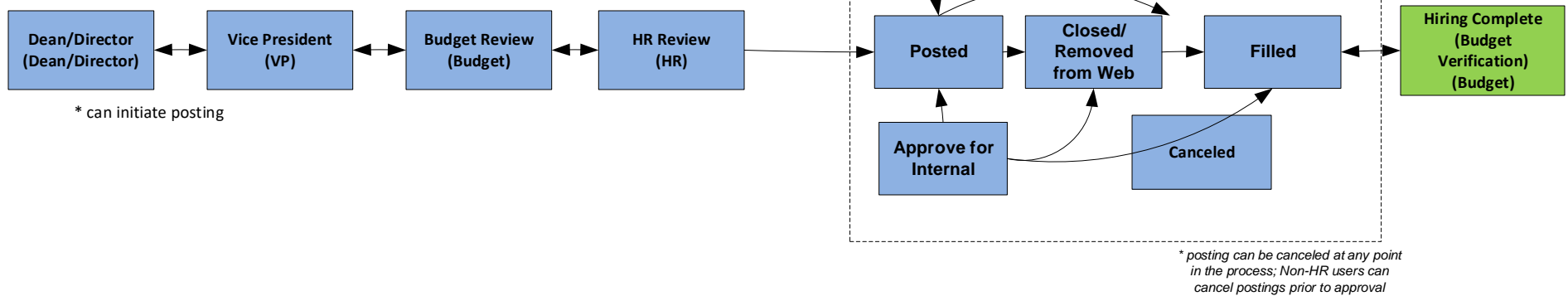
# Marshall University Workflow

October 6, 2021

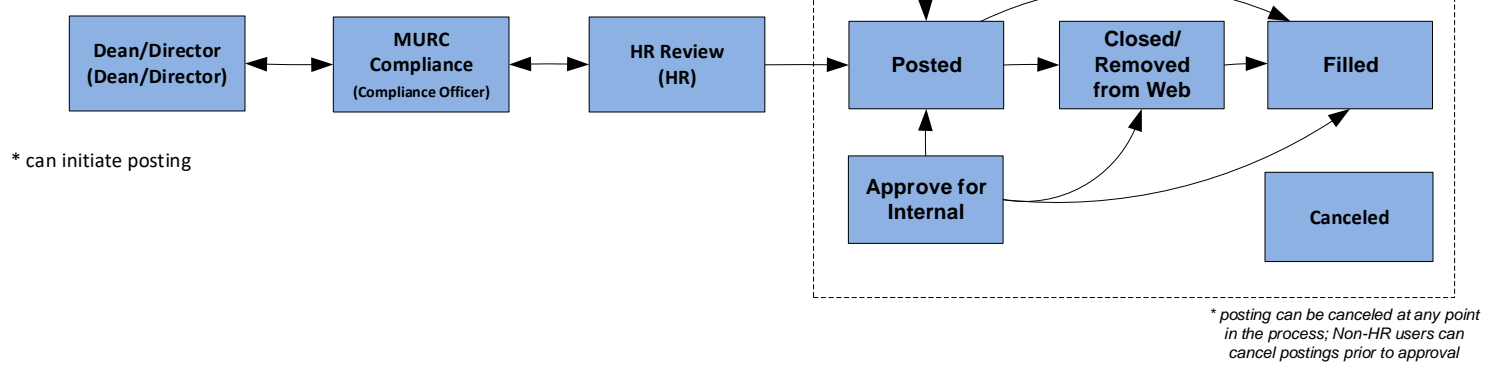
## User Types

Human Resources: College  
 Hiring Manager: Personal  
 Executive Officer: Department  
 Budget: College  
 VP Admin/Finance: College  
 President: College

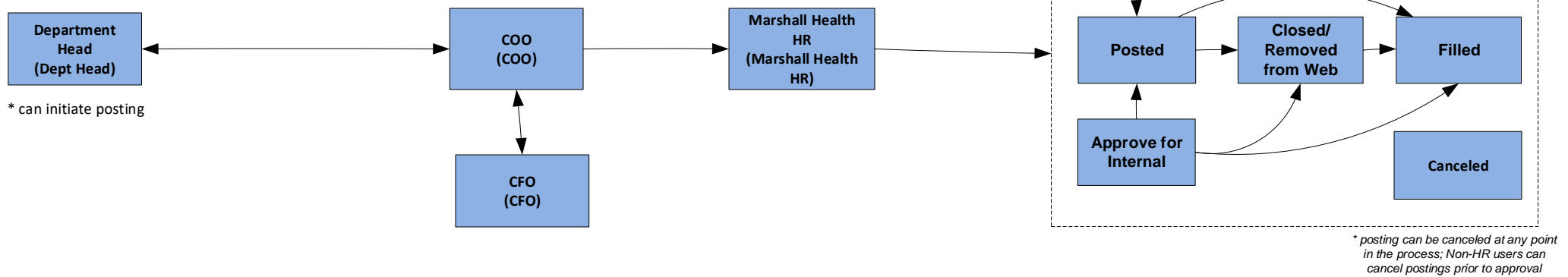
### Non-Classified/Classified Exempt, Classified/Non-Exempt, Faculty: Posting Workflow



### MURC: Posting Workflow



### Marshall Health: Posting Workflow



#### Workflow Legend

- System State
- ( ) State Owner - user group who can move from that state to another state
- \*
- Emal

#### REQUISITION / POSTING NOTES:

- \* COO is the "HR" for the Marshall Health Position Type
- \*
- \* Need a USF for "Search Chair"

# Marshall University Workflow

October 6, 2021

## User Types

Human Resources: College  
 Hiring Manager: Personal  
 Executive Officer: Department

Will use Special Handling List (Not Eligible for Rehire)

## Non-Classified/Classified Exempt, Classified/Non-Exempt, Faculty, MURC: Applicant Workflow

