


## The Marshall Advantage

The Marshall University School of Physical Therapy is located in Huntington, West Virginia and offers a Doctor of Physical Therapy (DPT) degree that is accredited by the Commission on Accreditation in Physical Therapy Education (CAPTE). The program was established in 2012 and the first cohort graduated in 2015. We encourage prospective students to visit Marshall University and the School of Physical Therapy. We are confident that you will be impressed by what you see, hear, and experience. If the Marshall School of Physical Therapy feels like home, we will NOT be surprised. The program was designed to promote excellence in Physical Therapy education, provide outstanding student learning opportunities, and to be student-centered. Visit our website to learn more about the program or contact D. Scott Davis PT, MS, EdD, OCS (Professor/Chair/Program Director) at [davis1090@marshall.edu](mailto:davis1090@marshall.edu) to schedule a visit.

 SCHOOL OF PHYSICAL THERAPY



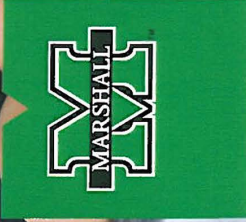
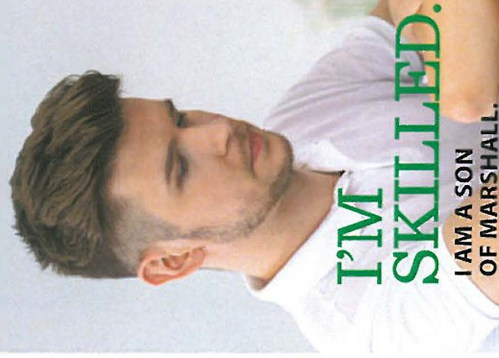
[www.marshall.edu/physical-therapy/](http://www.marshall.edu/physical-therapy/)



School of Physical Therapy  
2847 5th Avenue  
Huntington, WV 25702

COLLEGE OF HEALTH  
PROFESSIONS

SCHOOL OF PHYSICAL THERAPY



## ADMISSION REQUIREMENTS

---

Admission to the entry-level Doctor of Physical Therapy Program is on a competitive basis and requires completion of a Baccalaureate degree and a minimum overall and pre-requisite GPA of 3.0.

### Prerequisite Courses\*

- 8 credits of chemistry (including labs)
- 8 credits of biology (including labs)
- 8 credits of physics (including labs)
- 3 credits of human anatomy
- 3 credits of physiology
- 3 credits of math
- 3 credits of statistics

6 credits of psychology (preferably abnormal, developmental, or lifespan)

\*See website for additional admission requirements at [www.marshall.edu/physical-therapy](http://www.marshall.edu/physical-therapy)



## AFFORDABILITY/STRONG OUTCOMES

---

- Non-resident tuition is 17% less than the national average
- 100% employment rate
- 92% NPTE Board Pass Rate
- Graduate Teaching Assistant positions are available

## OUTSTANDING ACADEMIC FACULTY

---

- 11 dedicated Core Faculty
- 8 Faculty are Certified Clinical Specialists
- All faculty hold a Clinical and/or Terminal Doctoral Degree

## STATE-OF-THE-ART FACILITIES

---

- 3 dedicated high-tech classrooms
- Large Research Laboratory
- Student lounge/kitchenette
- 8 seminar/study rooms
- <http://www.marshall.edu/physicaltherapy/sopt-campus/>

**Excellence in Motion | [physicaltherapy@marshall.edu](mailto:physicaltherapy@marshall.edu)  
<http://www.marshall.edu/physical-therapy/> | (304) 696-5611**

## Marshall University and “Wild and Wonderful” West Virginia

---

Marshall University was founded in 1837 and is named after John Marshall, the 4th Chief Justice of the United States. Marshall University is the 2nd largest institution of Higher Education in West Virginia with a total student enrollment of 13,630 students. Marshall offers 122-degree programs from the Baccalaureate to the Doctoral level. West Virginia is an outdoor paradise with ample opportunities for hiking, trail running, mountain biking, rock climbing, whitewater rafting, snow skiing, spelunking, hunting, fishing, horseback riding, and ATV riding. Individuals who enjoy an active outdoor lifestyle will find Wild and Wonderful West Virginia to be an excellent place to learn and play.



**EXCELLENCE IN MOTION**

